

GOVERNMENT CORNER RESTORATION FORM

Township 25 S Range 7 W Sec. 24 County DOUGLAS

APR 16 1990

State OR Date 4/6/90

No. _____

COUNTY SURVEYOR
DOUGLAS COUNTY, ORE.

Corner Designation _____

$\frac{1}{4} \frac{S24}{S25}$

- _____ Condition Report Only
- _____ Not Found
- Renewed
- _____ Unrecorded
- _____ Surveyed In
- _____ Referenced Out

Previous Renewals #3, #18, #79

MONUMENT DETAIL

Monument(s) Found: (Condition and Source)

2 1/2" DIA. DISC BRASS CAP ON A
BENT 1 1/4" O.D. IRON PIPE, PROTRUDING
17" ABOVE GROUND. BC/IP LEANS
0.4 FT SOUTH OF PLUMB (REN #79)

1" DIA BY 18" LONG IRON BAR
IS FOUND ALONG SOUTH SIDE OF
BC/IP 5" BELOW GROUND (REN #18)

COUNTY SURVEYORS OFFICE

T 25 S

$\frac{1}{4} \frac{S24}{S25}$

R 7 W

1963

Accessories Found:

40" NOW 41" DIA. 8 FT HIGH OAK SNAG WITH A PREVIOUSLY
OPENED ROTTED OUT BLAZE (AN AXE MARK IS VISIBLE, NO
SCRIBING SEEN, BEARS N 82Y2°W, 77.2 FT (AGREES WITH
RECORD) REN #3

12" NOW 22" DIA. W. OAK WITH A FULLY HEALED DOUBLE BLAZE,
BEARS S 3 3/4°W, 93.1 FT (REC S 3 3/4°W, 92.4 FT DIST IS
A FACE MEASUREMENT) REN #3

13" W. OAK BEARING N 18Y2°W 125.1 FT FROM REN #79
IS GONE.

#142 ✓

RENEWAL

Monument Set (Procedure and Description)

PLUMB POSITION OF DC SO BC/ IP IS REFERENCED, BC/ IP IS REMOVED AND STRAIGHTENED (MEASURES 36" LONG). THE STAMPING "RESET 1990" IS ADDED TO BRASS CAP. BC/ IP IS SET FLUSH WITH GROUND AT REFERENCED POSITION, 1" I. BAR IS SET ALONG SOUTH SIDE 4" BELOW GROUND. A 6" DIA. CONCRETE COLLAR WHICH IS FILLED WITH CONCRETE IS SET AROUND BC/ IP AND I. BAR. COLLAR IS FLUSH WITH GROUND.

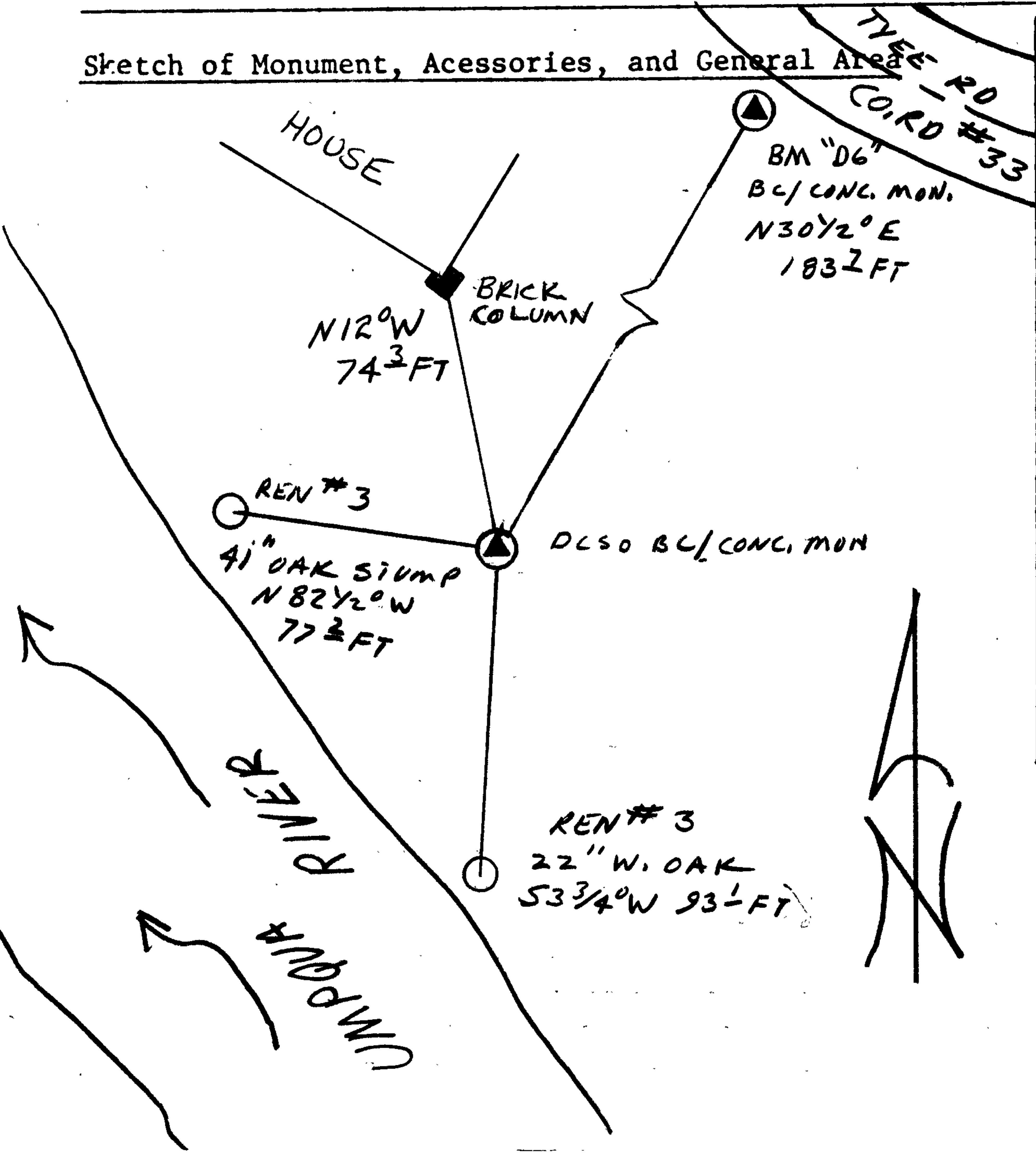
Monument Detail

COUNTY SURVEYORS OFFICE
T 25S
1/4 524
525
R 7W
RESET 1990
1963

New Accessories

2" DIA BRASS CAP STAMPED "BM D6 LS 1076 1983" SET IN CONCRETE, BEARS N 30 1/2° E, 183.7 FT.
SW COR OF HOUSE IS A BRICK COLUMN WHICH BEARS N 12° W, 74.3 FT

Sketch of Monument, Accessories, and General Area



Location & Comments

Comp. Declin. 18° E
Agency DC SO
Party Chief LARRY E. MONREAN
Notekeeper RANDALL W. SMITH
Witnesses

Address

Surveyor's Seal

REGISTERED
PROFESSIONAL
LAND SURVEYOR

Larry E. Monrean

OREGON
JULY 13, 1979
LARRY E. MONREAN
#1830