

~~720000~~

FILED

GOVERNMENT CORNER RESTORATION FORM

Township 29S Range 8W Sec. 9 County DOUGLAS

APR 3 1990

State OR Date 3/28/90

No. _____ COUNTY SURVEYOR
DOUGLAS COUNTY, ORE.

Corner Designation

W 1/6 S 9
S 16

- Condition Report Only
- Not Found
- Renewed
- Unrecorded
- Surveyed In
- Referenced Out

Previous Renewals CS 37/200, 1980 BLM D. RESURVEY, CS 63/9 MONUMENT DETAIL

Monument(s) Found: (Condition and Source)

POSITION OF CORNER WAS REFERENCED BY JOHN READ (OSHD). A HUB AND TACK IS FOUND AT OSHD POSITION OF REFERENCED CORNER. THIS HUB AND TACK CHECKS WELL WITH R.P. HUB AND TACK'S SET BY JOHN READ. POSITION OF BLM BC/IP FALLS UNDER FILL OF NEW HIGHWAY CONSTRUCTION. (OSHD NOTES ATTACHED TO BACK) 1' AXLE NOTED IN 1980 BLM D. RESURVEY AND W 1/6 COR AND BT'S PER CS 37/200 ARE NOT FOUND.

N/A

Accessories Found:

NONE FOUND APPARENTLY BT'S CUT DOWN AND COVERED UP IN HIGHWAY CONSTRUCTION.

#208 x

C.S. File No. 64/6-12c

RENEWAL

Monument Set (Procedure and Description)

A 2 3/8" DIA. DCSO BRASS CAP ON A 1 3/8" O.D. BY 31" LONG IRON PIPE, IS SET WEST 111.0 FT FROM REFERENCED CORNER. DCSO BC/IP PROTRUDES 9" ABOVE GROUND

Monument Detail

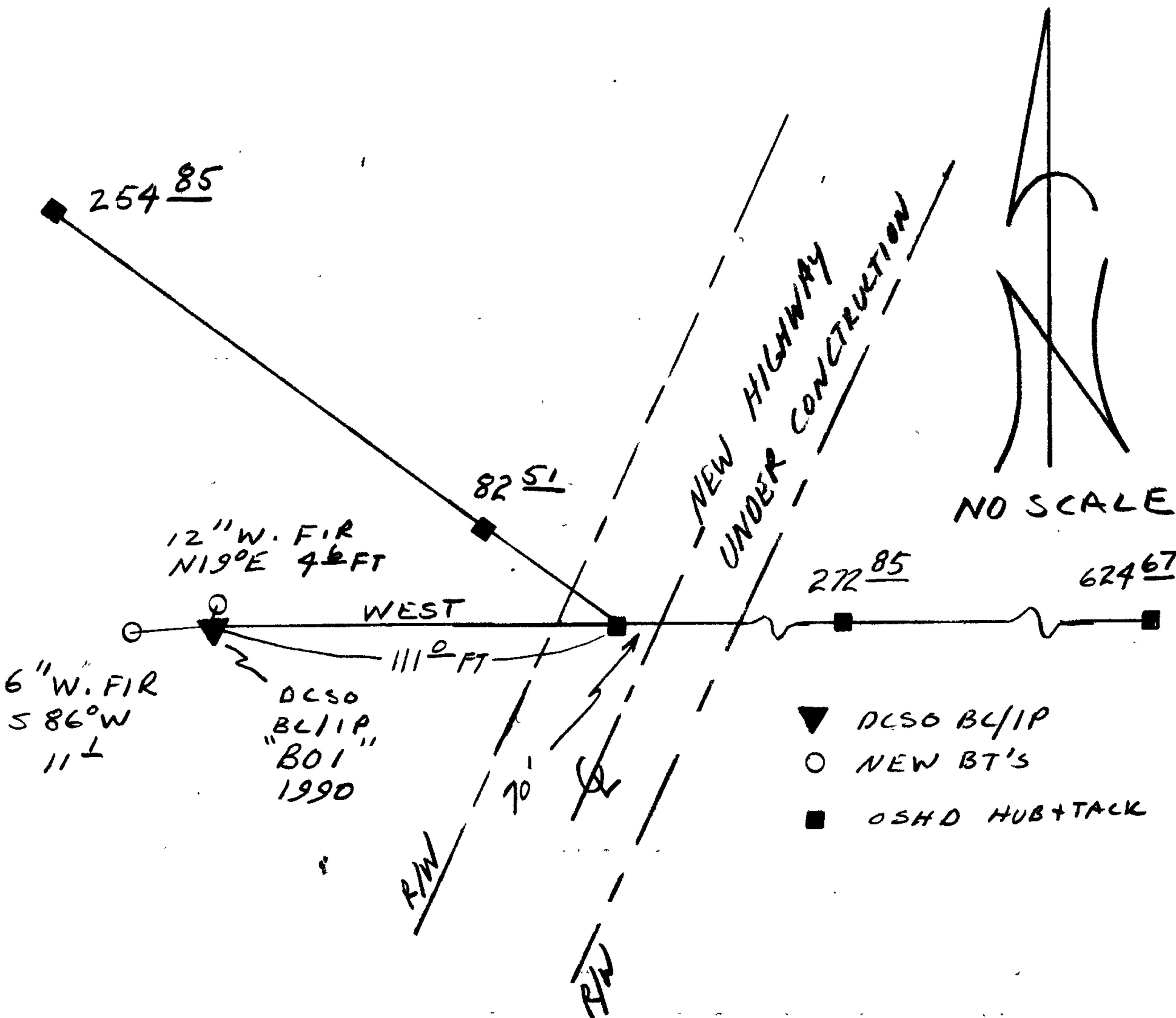
DOUGLAS COUNTY SURVEYORS OFFICE
 T29S R8W
 W 1/4 59
 S16
 B01 →
 EAST 111 FT
 TO COR
 1990

New Accessories REF. POSITION OF DCSO BC/IP. (B01)

12" W. FIR DOUBLE BLAZED AND SCRIBED "B01 W 1/4 S9 CS BT"
 BEARS N19°E, 4.6 FT.

6" W. FIR DOUBLE BLAZED AND SCRIBED "B01 W 1/4 S16 CS BT"
 BEARS S86°W, 11.1 FT

Sketch of Monument, Accessories, and General Area



Location & Comments

Comp. Declin. 18°E
 Agency DCSO
 Party Chief RANDALL W. SMITH
 Notekeeper RANDALL W. SMITH
 Witnesses STEPHEN J. FLAUSE

Address

Surveyor's Seal

REGISTERED
 PROFESSIONAL
 LAND SURVEYOR

Larry E. Monrean

OREGON
 JULY 13, 1979
 LARRY E. MONREAN
 #1830

Camas Mtn. Wayside -

J. Read
M. Wagstaff
L. Coffel
J. King

Muns Cr. C10653

RP (62467)

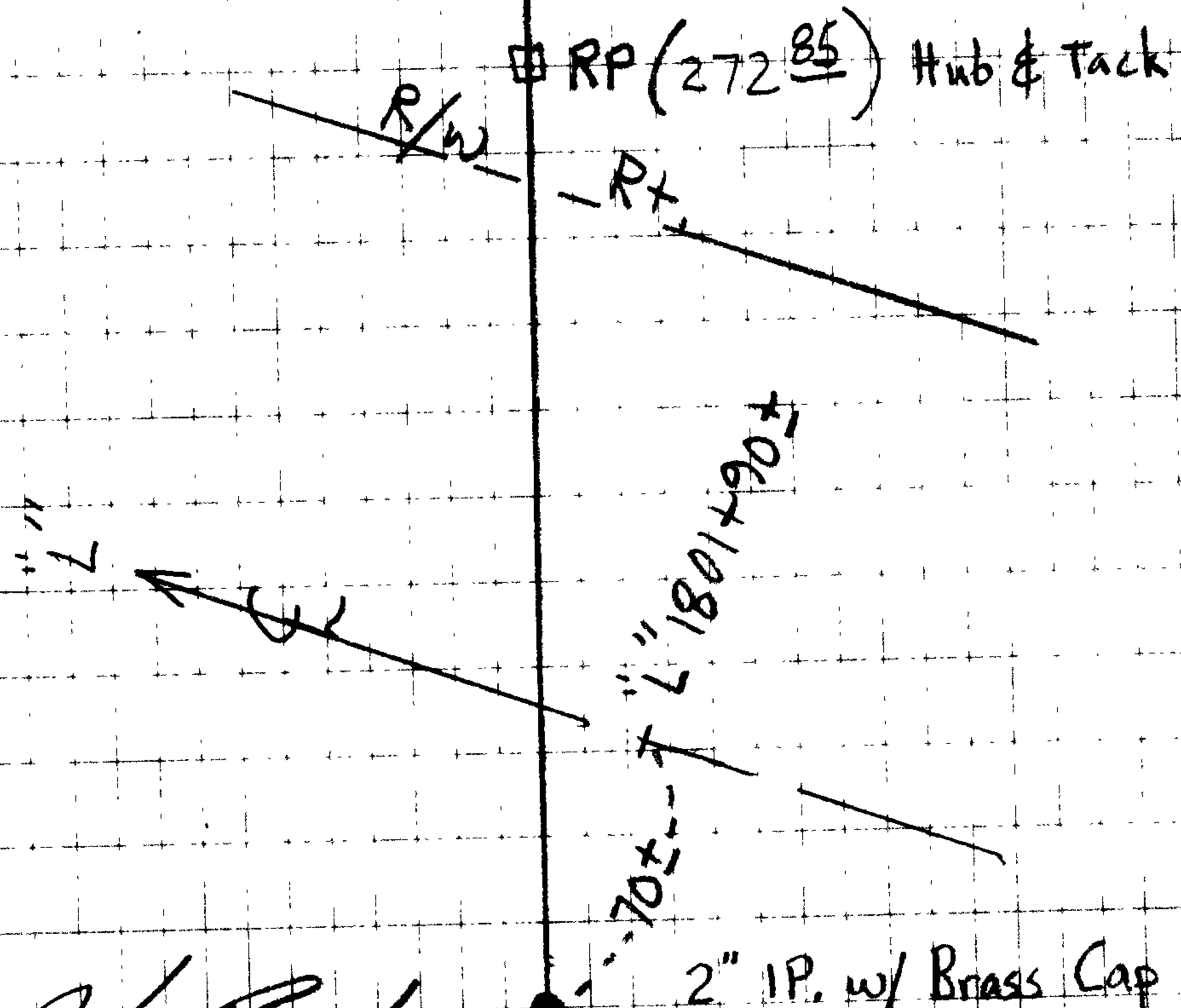
10-13-88

Hub & Tack

60° Rain Showers

Wild T16 Theodolite

" DI4L Distomat EDM



J. Read
PLS 1835
10-13-88

2" IP. w/ Brass Cap
West 1/16 corner section 9/16

C.S. File No. 64/6

Camas Mtn. Wayside-

Muns Cr. C10653

Wild T16 Theodolite

DI4L Distomat EDM

π \square $\overset{254^{90}}{M. Wagstaff}$
 ϕ L. Coffel

10-11-88
65° Overcast

\square RP (~~254⁹⁰~~)
(254⁸⁵) 10-13-88

\square RP(82⁵¹)

R/W Lt.

John Reed
PLS 1835

10-13-88

2" IP. w/ Brass Cap

West $\frac{1}{16}$ corner sec. $\frac{9}{16}$

10±"

AH

1" $\frac{1}{4}$ "

"L1801290

C.S. File NO. 67/6