

FILED

GOVERNMENT CORNER RESTORATION FORM

Township 215 Range 5W Sec. 34 County DOUGLAS

APR 3 1990

State OR Date 3/29/90 No. _____

COUNTY SURVEYOR
DOUGLAS COUNTY, ORE.

Corner Designation

1/4 S34/S35

- Condition Report Only
- Not Found
- Renewed
- Unrecorded
- Surveyed In
- Referenced Out

MONUMENT DETAIL

Previous Renewals M 19-53, M 81-72

Monument(s) Found: (Condition and Source)

A 2 1/2" DIA ALSO BRASS CAP ON A
1 1/4" O.D. IRON PIPE FLUSH WITH
GROUND. (PER M 19-53)

3/4" BOLT WITH NUT PROTRUDING 8 IN
ABOVE GROUND BEARS N 44 1/2° W,
0.8 FT FROM ALSO BC/IP.

CO SURVEYORS
T 215

34/35 1/4
R5W CP
OFFICE

Accessories Found:

BT'S AND BO'S FOUND AS RECORDED IN RENEWAL #166
(APRIL 19, 1989) ALL REFERENCES WITH THE EXCEPTION
OF THE 5/8" I.P. BEARING S 1° W, 223.68 FT WILL BE
DESTROYED IN NEAR FUTURE BY NEW HIGHWAY CONSTRUCTION.

#170 ✓

RENEWAL

Monument Set (Procedure and Description)

NONE

Monument Detail

N/A

New Accessories

9" DIA. I. CEDAR DOUBLE BLAZED AND SCRIBED "Y4 S34 CS BT"

BEARS S 82° W, 96.8 FT.

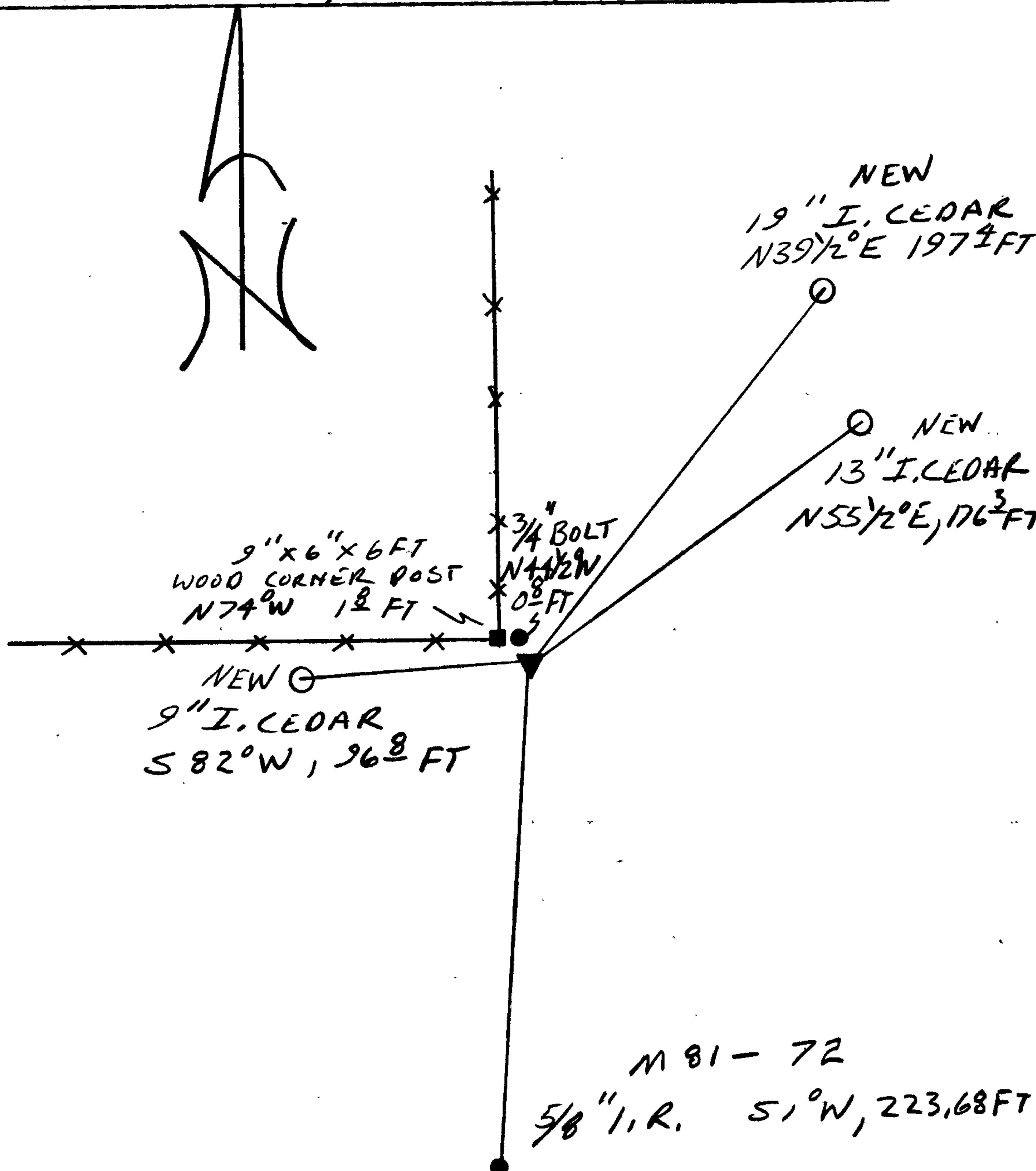
19" DIA. D. FIR DOUBLE BLAZED AND SCRIBED "Y4 S35 CS BT"

BEARS N 39 1/2° E, 197.4 FT.

13" DIA. DOUBLE TRUNKED I. CEDAR, DOUBLE BLAZED AND SCRIBED

"Y4 S35 CS BT" ON WEST TRUNK, ROOT CROWN BEARS N 55 1/2° E, 176.3 FT.

Sketch of Monument, Accessories, and General Area



Location & Comments

Comp. Declin. 18° E
 Agency DCSO
 Party Chief RANDALL W SMITH
 Notekeeper Randall W Smith
 Witnesses STEPHEN J. FLAUSÉ

Address

Surveyor's Seal

REGISTERED
 PROFESSIONAL
 LAND SURVEYOR

Larry E. Monrean

OREGON
 JULY 13, 1979
 LARRY E. MONREAN
 #1830

M 81 - 72

5/8" I. R. S 1° W, 223.68 FT