

GOVERNMENT CORNER RESTORATION FORM

FILED

Township 28S Range 6W Sec. 4 County DOUGLAS

*Handwritten initials*

MAR 21 1990

State OR Date 3/16/90 No. \_\_\_\_\_

Corner Designation

COUNTY SURVEYOR  
DOUGLAS COUNTY, ORE.

55 | 54  
58 | 59

- Condition Report Only
- Not Found
- Renewed
- Unrecorded
- Surveyed In
- Referenced Out

Previous Renewals #6 #65

MONUMENT DETAIL

Monument(s) Found: (Condition and Source)  
3/4" O.D. IRON PIPE WITH AN UNMARKED  
1/2" DIA IRON CAP ON TOP, FOUND  
8 IN BELOW GROUND.

N/A

Accessories Found:

14" NOW 36" DIA. 1 FT HIGH OAK STUMP, NO BLAZES OR  
SCRIBING VISIBLE, BEARS N48°W, 75.0 FT (RECORD  
N48°W, 75.9 FT POSSIBLE SLOPE MEASUREMENT). REN#6

8" B. OAK NOW DEPRESSION IN GROUND BEARS S25 1/2°E,  
105.2 FT (AGREES WITH REC) REN#65

20" NOW 31" DIA. B. OAK WITH A FULLY HEALED DOUBLE  
BLAZE, BEARS N45°E, 1.8 FT (AGREES WITH RECORD) REN#65

NO OTHER ORIGINAL OR RENEWAL BEARING TREES ARE  
FOUND

#186 ✓

C.S. File No. 69/6-10

C

RENEWAL

Monument Set (Procedure and Description)

Monument Detail

NONE

N/A

New Accessories

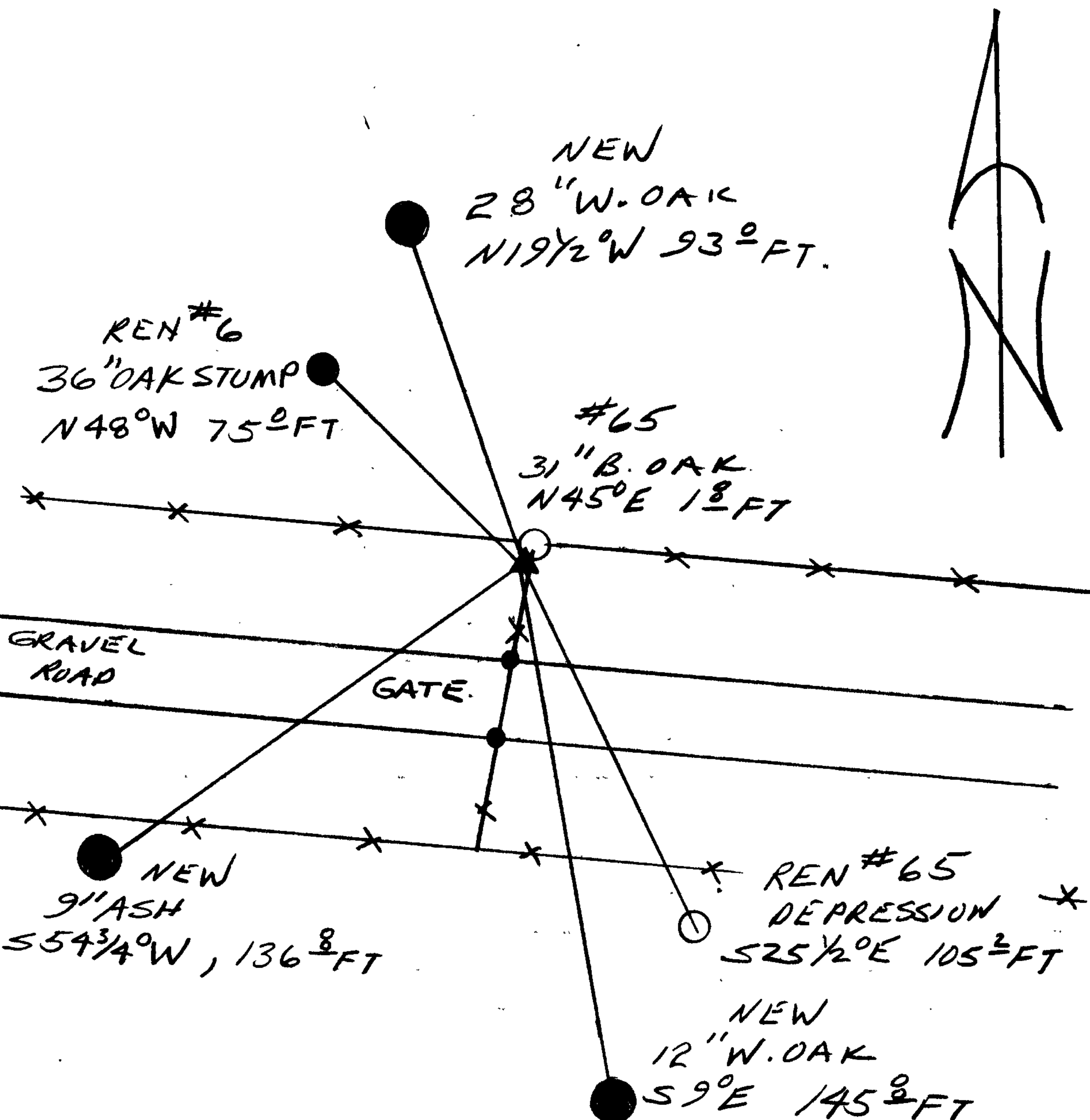
9" DIA. ASH DOUBLE BLAZED AND SCRIBED "T285 R6W S8 CS BT"  
BEARS S 54 3/4° W, 136.8 FT

12" DIA. W. OAK DOUBLE BLAZED AND SCRIBED "T285 R6W S8 CS BT"  
BEARS S 9° E, 145.8 FT

28" DIA W. OAK DOUBLE BLAZED AND SCRIBED "T285 R6W S5 CS BT"  
BEARS N 19 1/2° W, 93.0 FT

Sketch of Monument, Accessories, and General Area

Location & Comments



Comp. Declin. 18° E  
 Agency DCSO  
 Party Chief RANDALL W SMITH  
 Notekeeper Randall W Smith  
 Witnesses STEPHEN J FLAUSE

Address

Surveyor's Seal

REGISTERED  
 PROFESSIONAL  
 LAND SURVEYOR

*Jan T. Man*

OREGON  
 JULY 13, 1979  
 LARRY E. MONREAN  
 #1830