

GOVERNMENT CORNER RESTORATION FORM

FILED

Township 27S Range 6W Sec. 22 County DOUGLAS

State OR Date 3/9/90 No. \_\_\_\_\_

MAR 21 1990

Corner Designation

S22/S23  
S27/S26

COUNTY SURVEYOR

DOUGLAS COUNTY, ORE.

Condition Report Only

Not Found

Renewed

Unrecorded

Surveyed In

Referenced Out

Previous Renewals # 31

Monument(s) Found: (Condition and Source)

A 1" I.D. IRON PIPE PROTRUDING  
2" ABOVE GROUND (REN#31)

N/A

Accessories Found:

20" NOW SHATTERED AND ROTTED OAK STUMP NO BLAZES  
OR SCRIBING SEEN, BEARS N 44 3/4° E, 103.6 FT  
(AGREES WITH REC) ORIG. BT

ORIG. SOUTHEAST BT IS GONE.

8" NOW 13" DIA W. OAK WITH A PREVIOUSLY OPENED UNHEALED  
BLAZE WITH SCRIBING VISIBLE "BT" (BLAZE IS 4 FT ABOVE  
GROUND) BEARS N 46° W, 89.8 FT (AGREES WITH REC) ORIG. BT

7" NOW 11" DIA ROOT CROWN OF A ROTTED OAK (FLUSH WITH GROUND)  
NO BLAZES OR SCRIBING VISIBLE, BEARS S 75 3/4° W, 50.1 FT  
(REC S 75 3/4° W, 51.5 FT IS A SLOPE DIST.) ORIG. BT

10" NOW 11" DIA. W. OAK WITH A FULLY HEALED DOUBLE BLAZE  
BEARS S 28 1/2° E, 25.3 FT (REC, S 33° E, 25.3 ) REN#31

16" NOW 24" DIA. 9 FT HIGH D. FIR STUMP WITH A FULLY HEALED DOUBLE BLAZE  
BEARS N 41° W, 48.6 (AGREES WITH REC) REN#31

14" NOW 18" DIA 5 1/2 FT HIGH D. FIR STUMP WITH A FULLY HEALED DOUBLE BLAZE  
BEARS N 32° E, 30.3 FT (REC, N 32° E, 29.7 FT) REN#31

#1924

64/6-9 C

RENEWAL

Monument Set (Procedure and Description)

A 2 3/8" DIA. BRASS CAP ON A 1 3/8" O.D. BY 32 IN LONG IRON PIPE IS SET AT REFERENCED POSITION OF 1" I.P. BC/IP PROTRUDES 5 IN ABOVE GROUND WITH 1" I.P. BY 30" LONG I.P. FROM REN #31 SET ALONG EAST SIDE OF BC/IP. 1" I.P. PROTRUDES 4 IN ABOVE GROUND.

Monument Detail

OFFICE  
1990

T27 S  
S22 | S23  
S27 | S26

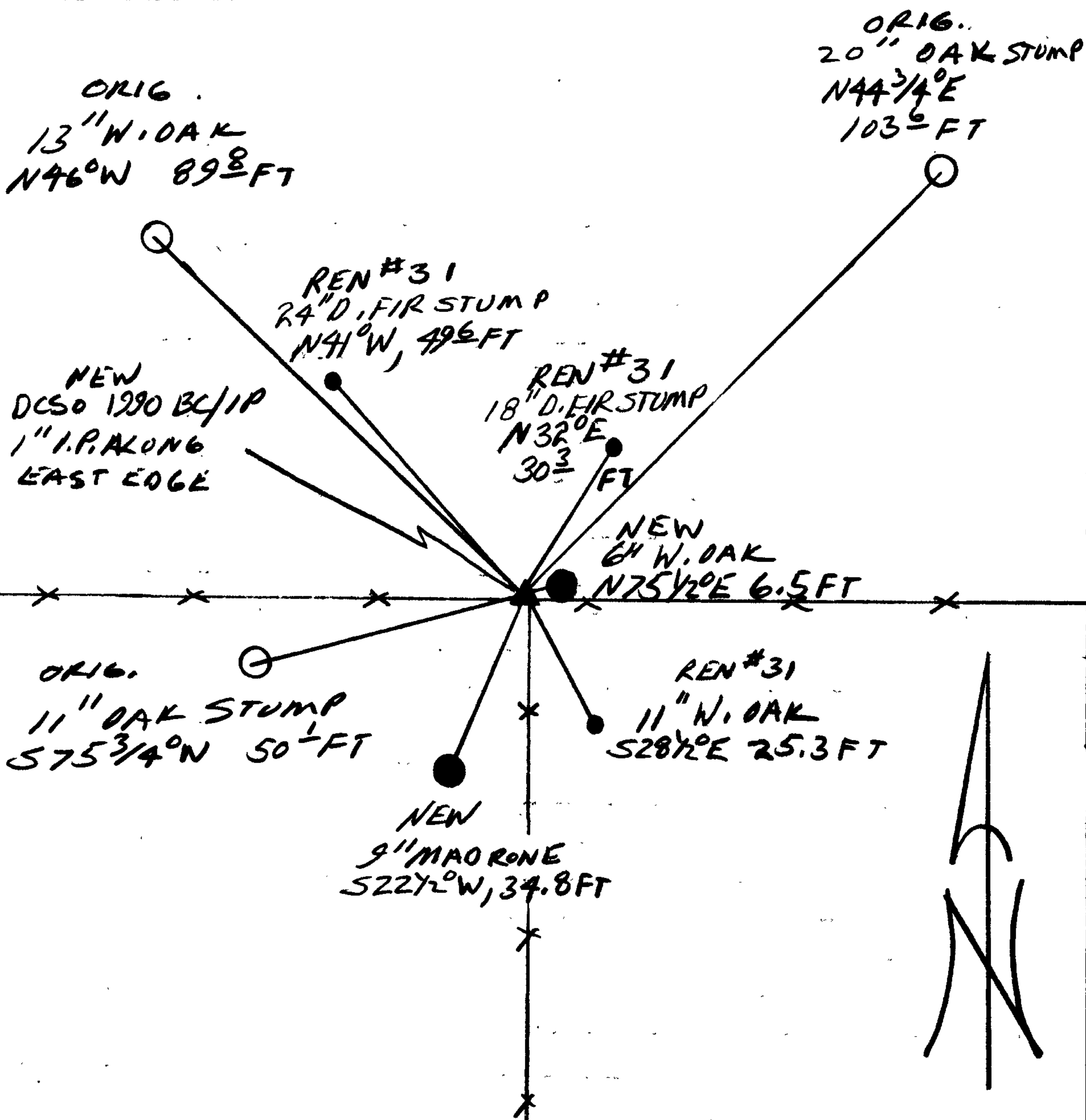
DOUGLAS COUNTY SURVEYORS

New Accessories

6" DIA. W. OAK DOUBLE BLAZED AND SCRIBED "T27SR6WS23CS BT"  
BEARS N75 1/2° E, 6.5 FT

9" DIA. MADRONE BARK SCRIBED "T27SR6WS27CS BT"  
BEARS S22 1/2° W, 34.8 FT

Sketch of Monument, Accessories, and General Area



Location & Comments

CORNER LIES AT THE INTERSECTION OF AN EAST — WEST AND SOUTH RUNNING BARBED WIRE FENCE LINE, THESE FENCE LINES ARE OLD AND NOT MAINTAINED ALOT OF WIRE IS ON THE GROUND.

Comp. Declin. 18° E  
Agency DLSD  
Party Chief RANDALL W SMITH  
Notekeeper [Signature]  
Witnesses STEPHEN J. FLAUSE

Address

Surveyor's Seal

39 8

REGISTERED PROFESSIONAL LAND SURVEYOR

[Signature]

OREGON  
JULY 13, 1979  
LARRY E. MONREAN  
#1830