

GOVERNMENT CORNER RESTORATION FORM

FILED

JS

Township 30S Range 4W Sec. 15 County DOUGLAS

MAR 15 1990

State OR Date 3/8/90 No. _____

COUNTY SURVEYOR
DOUGLAS COUNTY, ORE.

Corner Designation

SE COR



DLC 47

Condition Report Only

Not Found

Renewed

Unrecorded

Surveyed In

Referenced Out

Previous Renewals #33 #249

MONUMENT DETAIL

Monument(s) Found: (Condition and Source)

NONE CORNER LIES NEAR
CENTER LINE OF HIGHWAY.
AN ATTEMPT WAS MADE TO LOCATE
PREVIOUSLY SET MONUMENTS WITH
A METAL DETECTOR, HAD METAL
READING ALL OVER ROAD, NOT ABLE
TO LOCATE MONUMENTS

N/A

Accessories Found:

14" NOW 23" DIA. W. OAK WITH A FULLY HEALED DOUBLE BLAZE
BEARS S73°E, 223.9 FT (AGREES WITH REC.) REN #33

20" NOW 26" DIA. D. FIR WITH A FULLY HEALED DOUBLE BLAZE
BEARS S74°E, 193.3 FT (AGREES WITH REC.) REN #249

#292 ✓

C.S. File No. 67/6-7

C

RENEWAL

Monument Set (Procedure and Description)

1/8" DIA. HEAD ON AN 8" LONG
BOAT SPIKE SET FLUSH IN AL.
AT A POINT DETERMINED FROM
BEARING TREE'S

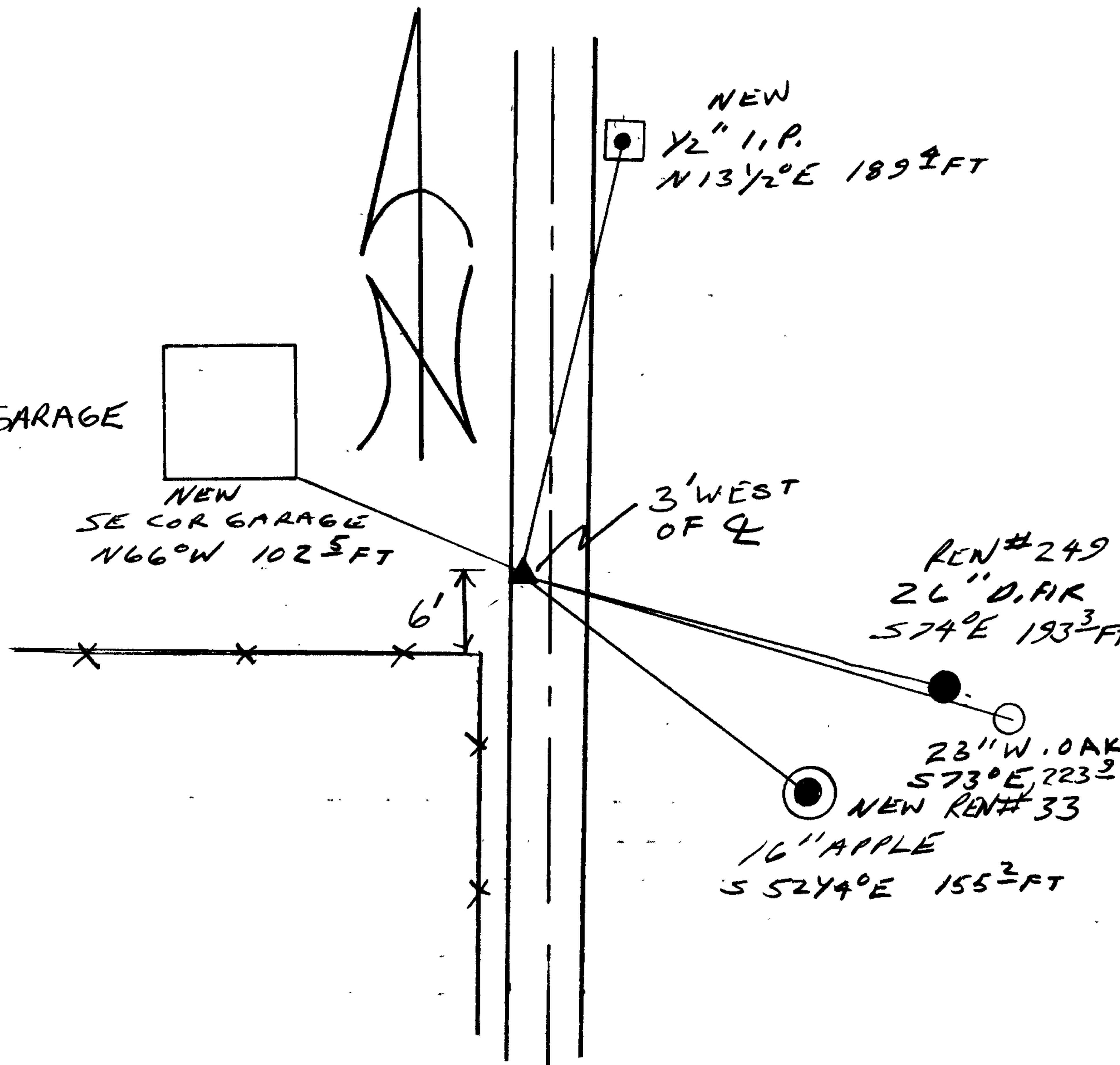
Monument Detail

N/A

New Accessories

16" DIA. APPLE TREE BARK SCRIBED "SE DLC 47 CS BT"
BEARS S52Y4°E, 155.2 FT
SOUTH EAST CONCRETE FOUNDATION CORNER OF GARAGE
BEARS N66°W, 102.5 FT.
1/2" IRON PIPE PROTRUDING 7 IN. FROM CENTER OF A 30" X 35" X 6" DEEP
CONCRETE SIGNPOST SLAB. I.P. BEARS N13 1/2°E, 189.4 FT.

Sketch of Monument, Accessories, and General Area



Location & Comments

CORNER LIES APPROX 3 FT
WEST OF CENTERLINE OF
HIGHWAY AT SOUTH
END OF DAYS CREEK
COMMUNITY.

Comp. Declin. 18°E
Agency DLCSO
Party Chief RANDALL W SMITH
Notekeeper Randall W Smith
Witnesses STEPHEN J FLAUSE

Address

Surveyor's Seal

REGISTERED
PROFESSIONAL
LAND SURVEYOR

Larry E. Monrean

OREGON
JULY 13, 1979
LARRY E. MONREAN
#1830