

GOVERNMENT CORNER RESTORATION FORM

FILED

JR

Township 27S Range 6W Sec. 24 County DOUGLAS

MAR 8 1990

State OR Date 2/22/90 No. _____

Corner Designation

AS DETERMINED IN REN #33

COUNTY SURVEYOR
DOUGLAS COUNTY, ORE.

DLC
56

- Condition Report Only
- Not Found
- Renewed
- Unrecorded
- Surveyed In
- Referenced Out

Previous Renewals # 33 # 149 V2 PG 39

Monument(s) Found: (Condition and Source)

2 3/8" DIA. DCSSO BRASS CAP ON A
1 1/4" O.D. IRON PIPE FLUSH WITH
GROUND. FROM REN #33

OFFICE OF
S W

D/LC
56

COUNTY SURVEYOR.

Accessories Found:

28" NOW 37" DIA. W. OAK NO BLAZES VISIBLE
BEARS N56°E, 113.8 FT (REC N57°E, 112.0 DISTANCE
(WAS A FACE MEASUREMENT) FROM REN #33

4" X CHISELED IN THE TOP OF THE EASTERLY CURB OF
W. UMPQUA ST. 1.5 FT NORTH OF THE SOUTH END OF THE
CURB, BEARS N29 1/2°E 53.4 FT (AGREES WITH REC) REN #149

4" X CHISELED ON TOP OF THE WESTERLY CURB OF
W. UMPQUA ST 1.5 FT NORTH OF THE SOUTH END OF
THE CURB, BEARS N11 1/2°W 39.1 FT (AGREES WITH REC) REN #149

#190 +

C.S. File No. 64/6-40

RENEWAL

Monument Set (Procedure and Description)

Monument Detail

NONE

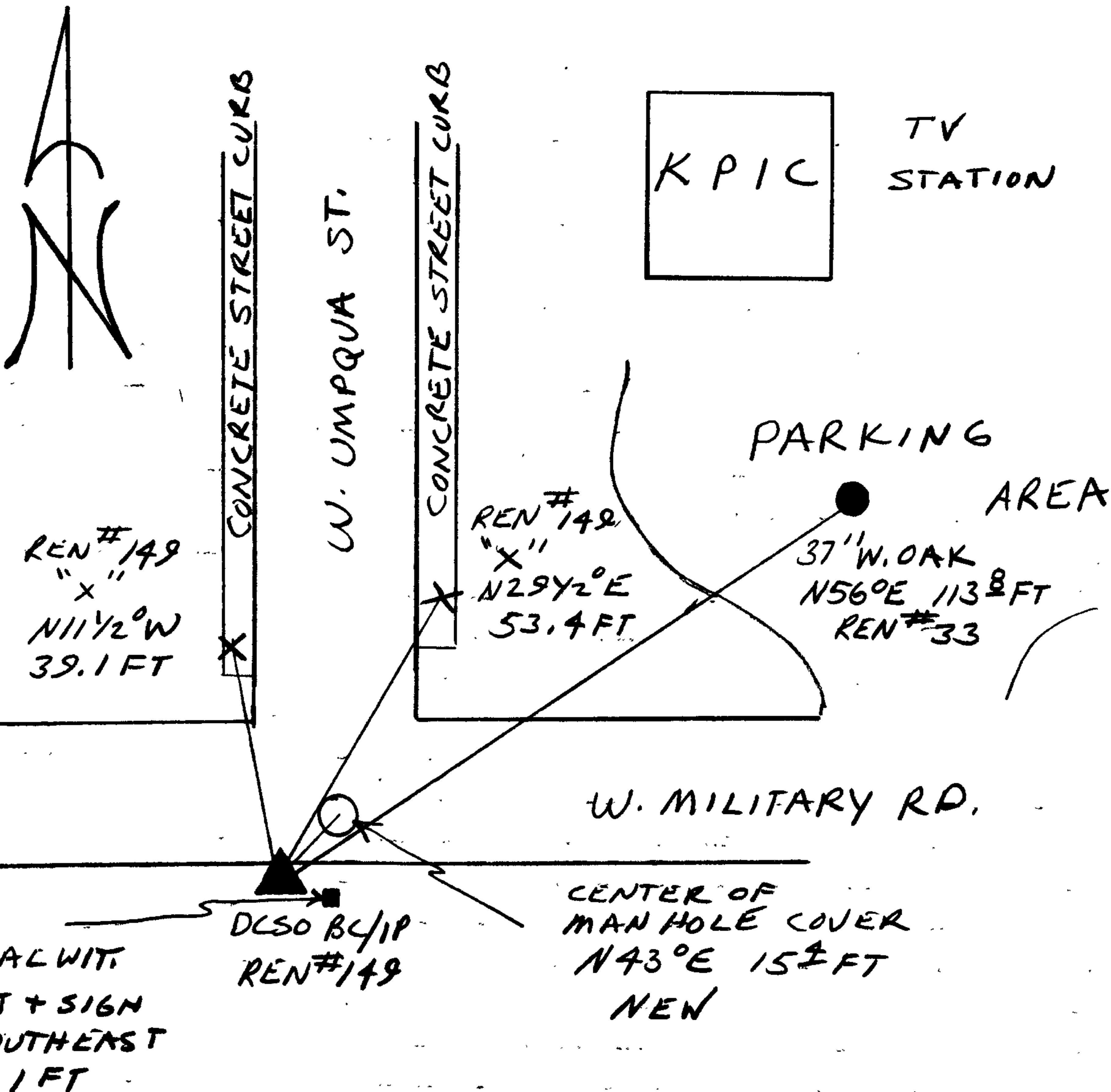
N/A

New Accessories

25" DIA MANHOLE COVER, NEAR CENTER OF INTERSECTION OF W. MILITARY RD AND W. UMPQUA ST, CENTER OF MANHOLE COVER BEARS N43°E, 15.4 FT.

Sketch of Monument, Accessories, and General Area

Location & Comments



CORNER LIES ALONG SOUTH EDGE OF SOUTHERLY DITCH TO MILITARY RD, NEAR THE INTERSECTION OF MILITARY RD AND UMPQUA ST.

Comp. Declin. 18°E
Agency DLSO
Party Chief RANDALL W SMITH
Notekeeper Randall White
Witnesses STEPHEN J FLAISE

Address

Surveyor's Seal

REGISTERED
PROFESSIONAL
LAND SURVEYOR

Larry E. Monrean

OREGON
JULY 13, 1979
LARRY E. MONREAN
#1830