

GOVERNMENT CORNER RESTORATION FORM

Township 27S Range 6W Sec. 9 County DOUGLAS

MAR 8 1990

State OR Date 2/28/90

No. _____ COUNTY SURVEYOR
DOUGLAS COUNTY, ORE

Corner Designation

S9 | S10
S16 | S15

- Condition Report Only
- Not Found
- Renewed
- Unrecorded
- Surveyed In
- Referenced Out

Previous Renewals #21, #47, #169

Monument(s) Found: (Condition and Source)

A 2 1/2" DIA. ALSO BRASS CAP ON AN IRON PIPE 15 IN BELOW GROUND. (REN #169)

DOUGLAS COUNTY SURVEYOR
T27S R6W

S9 | S10
S16 | S15

1984

Accessories Found:

40" NOW 52" DIA. B. OAK WITH A FULLY HEALED SINGLE BLAZE BEARS S82 1/2° W, 185.0 FT (REN #21) (AGREES WITH RECORD)

SOUTH EAST CORNER OF CONCRETE BASEMENT BEARS N70° W, 156.6 FT (REN #21) (RECORD N 68° W, 156.7 FT)

18" NOW 29" DIA. SEQUOIA WITH FULLY HEALED DOUBLE BLAZES BEARS S70° W, 92.7 FT. (AGREES WITH RECORD REN. #169)

RENEWAL

Monument Set (Procedure and Description)

Monument Detail

NONE

N/A

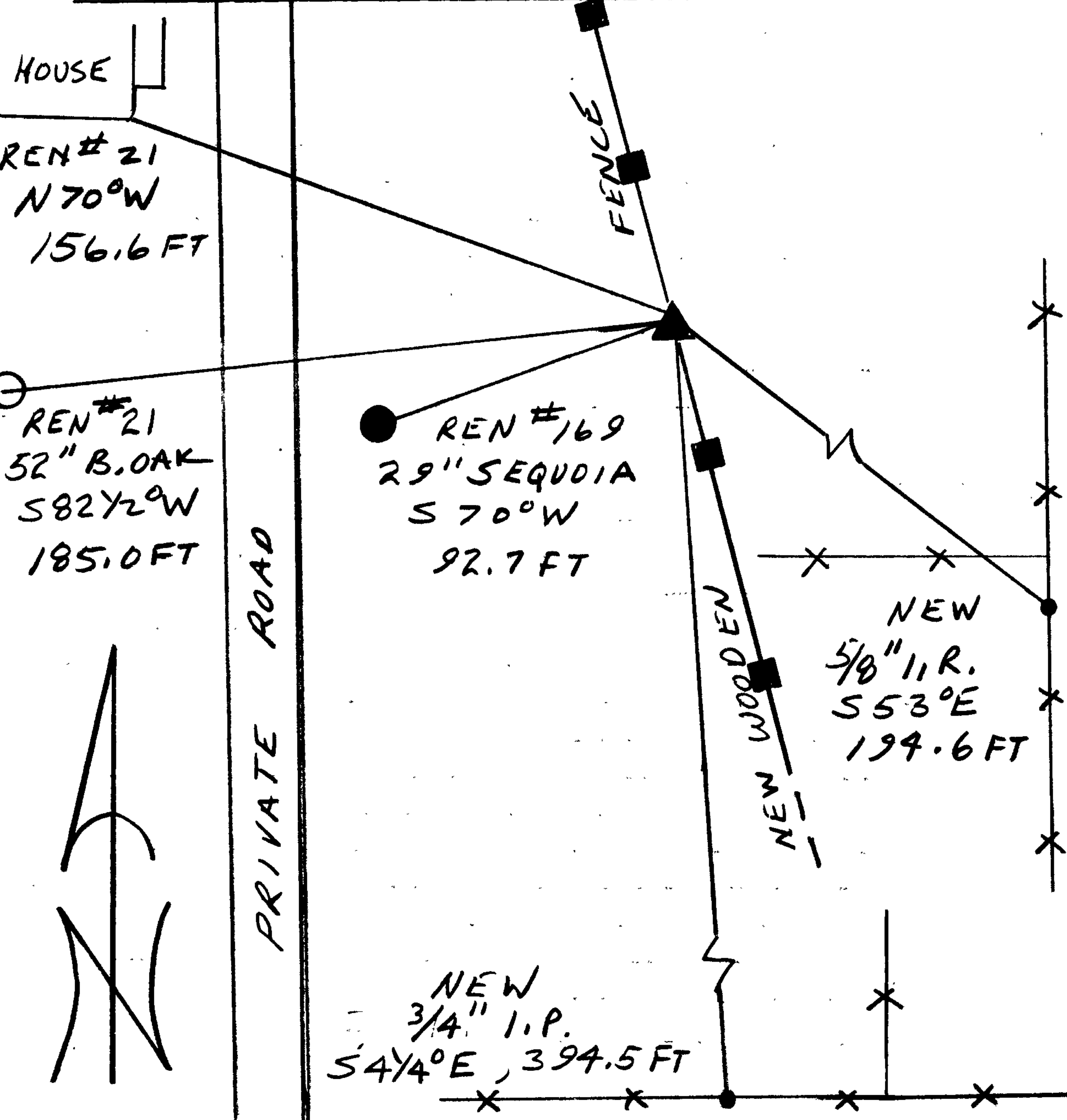
New Accessories

5/8" IRON ROD WITH YELLOW PLASTIC CAP MARKED "BAUGHMAN TECH. SERV."
PROTRUDES 4 IN ABOVE GROUND, BEARS S53°E, 194.6 FT

3/4" I.D. IRON PIPE PROTRUING 7 IN. ABOVE GROUND BEARS S4 1/4°E,
394.5 FT

Sketch of Monument, Accessories, and General Area

Location & Comments



NO CO'S OR BT'S IN
NORTHEAST QUADRANT.

Comp. Declin. 18°E
Agency DISO
Party Chief RANDALL W SMITH
Notekeeper [Signature]
Witnesses STEPHEN J FLAUE

Address

Surveyor's Seal

REGISTERED
PROFESSIONAL
LAND SURVEYOR

Larry E. Monrean

OREGON
JULY 13, 1979
LARRY E. MONREAN
#1830