

GOVERNMENT CORNER RESTORATION FORM

FILED

Township 27S Range 6W Sec. 4 County DOUGLAS

FEB 26 1990

State OR Date 2/21/90

No. _____

Corner Designation _____

COUNTY SURVEYOR
DOUGLAS COUNTY, ORE.

S32|S33
S5|S4

- _____ Condition Report Only
- _____ Not Found
- Renewed
- _____ Unrecorded
- _____ Surveyed In
- _____ Referenced Out

MONUMENT DETAIL

Previous Renewals (#18, #85 T26-6, #105 T27-6)

Monument(s) Found: (Condition and Source)
 A 3" BY 8" BY 24" STONE SET ON
 END TOP APPROX 6" BELOW GROUND
 (REC 7" BY 8" BY 18" IN REN #105)
 TOP 9" ARE BROKE OFF AND FRACTURED
 INTO 3 PIECES. (PROBABLY BROKEN WHEN
 FIELD WAS PLOWED). NO MARKS FOUND
 ON STONE. STONE SET IN REN #18(27-6)

COUNTY SURVEYOR'S OFFICE
T26S R6W

S32|S33
S5|S4

T27S R6W
1961

A 2 1/2" DIA DCSO BRASS CAP ON A 1 1/4" O.D.
 BY 36" LONG SPLIT END IRON PIPE
 IS FOUND LAYING ON TOP OF GROUND
 APPROX 4 FT SOUTH OF FOUND STONE.
 TOP OF BRIP SHOWS EVIDENCE OF BEING
 HIT BY A PLOW.

Accessories Found:

BRG AND DIST. TAKEN FROM TOP CENTER OF STONE
 A BENT METAL FENCE POST IS FOUND ALONG EAST EDGE
 OF STONE. SOURCE UNKNOWN.

10" NOW 20" DIA MYRTLE WITH HEALED SCARS, WE OPEN
 IN THREE PLACES NO BLAZES OR SCRIBING FOUND.
 BEARS N54 1/4° W, 113.7 FT (REC. N51° W, 113.7 FT) POSSIBLE
 NORTHWEST BT FROM REN #105

NO OTHER ORIGINAL OR RENEWAL BT'S FOUND.

#194 T26-6 x
#187 T27-6 x

RENEWAL

Monument Set (Procedure and Description)

A 5/8" BY 36" LONG IRON ROD IS SET 2 1/2 FT BELLOW GROUND AT REFERENCED POSITION OF FOUND STONE. STONE IS RESET ON END ON TOP OF 5/8" I.R. AT REFERENCED OUT POSITION. DCSO BC/IP IS RESET 0.2 FT WEST OF STONE, ALONG WEST EDGE OF STONE. THE MARKS RESET 1990 ARE ADDED TO BRASS CAP. STONE IS SET 7 IN BELLOW GROUND, DCSO BC/IP PROTRUDES 2 IN. ABOVE GROUND.

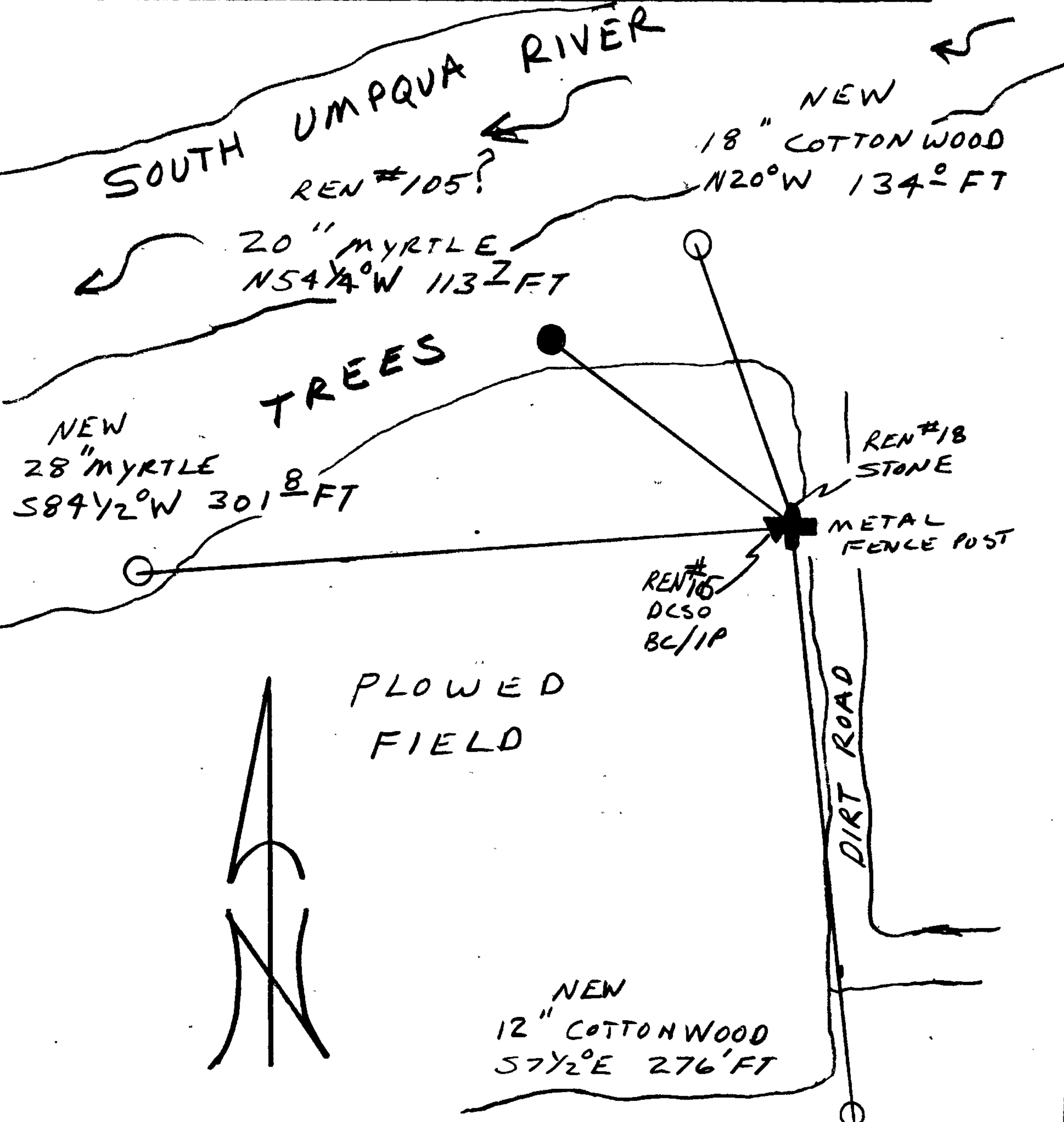
Monument Detail

COUNTY SURVEYOR'S OFFICE
 T26S R6W
 S32 | S33
 S5 | S4
 RESET
 T27S R6W
 1961 1990

New Accessories BRG. & DIST. TAKEN FROM TOP CENTER OF STONE

- 12" COTTON WOOD DOUBLE BLAZED AND SCRIBED "T27S R6W S4 CS BT"
 BEARS S 7 1/2° E, 276' FT
- 28" MYRTLE DOUBLE BLAZED AND SCRIBED "T27S R6W S3 CS BT"
 BEARS S 89 1/2° W, 301 1/2 FT
- 18" COTTON WOOD DOUBLE BLAZED AND SCRIBED "T26S R6W S32 CS BT"
 BEARS N 20° W, 134' FT

Sketch of Monument, Accessories, and General Area



Location & Comments

Comp. Declin. 18° E
 Agency DCSO
 Party Chief RANDALL W. SMITH
 Notekeeper Randall W. Smith
 Witnesses STEPHEN J. FLAUSE

Address

Surveyor's Seal

REGISTERED
 PROFESSIONAL
 LAND SURVEYOR

Larry E. Monrean

OREGON
 JULY 13, 1979
 LARRY E. MONREAN
 #1830