

GOVERNMENT CORNER RESTORATION FORM

FILED *JL*

Township 28S Range 6W Sec. 31 County DOUGLAS

State OR Date 2/6/90 No. _____

FEB 12 1990

Corner Designation AS ESTABLISHED IN REN #71

COUNTY SURVEYOR
DOUGLAS COUNTY, OR

S36 | S31
S1 | S6

- Condition Report Only
- Not Found
- Renewed
- Unrecorded
- Surveyed In
- Referenced Out

MONUMENT DETAIL

Previous Renewals (#1174 (#175 T29-7) (#144 T29-6) #67 IN T28S R7W) AND (#71 T28S R6W)

Monument(s) Found: (Condition and Source)

A 2 1/2" DIA. DCSO BRASS CAP ON A 1/4" O.D. IRON PIPE WHICH PROTRUDES 16" ABOVE GROUND. (PER REN #71)

COUNTY SURVEYORS OFFICE

T28S
R 7 W S36 | S31 R 6 W
S1 | S6
T28S
1958

Accessories Found:

ORIG. 10" LAUREL NOW 24" DIA AT BASE 3 FT HIGH ROTTED OAK STUMP WITH AXE MARK (MIX UP IN ORIG. REC. SEE REN #67 AND REN #71) BEARS N71 1/4° W, 39.6 FT (AGREE'S WITH ORIGINAL AND REN #71 POSSIBLE PROBLEM WITH DISTANCE IN REN #67).

15" NOW 20" DIA. D. FIR WITH A FULLY HEALED DOUBLE BLAZE, BEARS N87° E, 55.6 FT (AGREE'S WITH RECORD) FROM REN #71

15" NOW 23" DIA. D. FIR WITH A FULLY HEALED DOUBLE BLAZE, BEARS N28° W, 47.9 FT (AGREE'S WITH RECORD) FROM REN #71

13" NOW 18" DIA. D. FIR WITH A FULLY HEALED DOUBLE BLAZE, BEARS S59° W, 124.6 FT (AGREE'S WITH RECORD). FROM REN #71

SE BT. OF EPPSTEIN'S (REN #67) LOOKED FOR, NOT FOUND

18" DIA 4 FT HIGH ROTTED D. FIR STUMP, PREVIOUSLY OPENED WITH ILLEGIBLE SCRIBING VISIBLE. BLAZE FACES WEST, STUMP IS IN A SLIDE AREA. BEARS S60° W, 54.7 FT. ONE OF EPPSTEIN'S BT'S (REN #67) SEE COMMENTS IN REN #71

OTHER BT'S BY EPPSTEIN (REN #67) NOT LOOKED FOR

- #263 T29-6 X
- #292 T29-7 X
- #185 T28-6 X
- #274 T28-7 X

C.S. FILE NO. 64/5-110

RENEWAL

Monument Set (Procedure and Description)

NONE

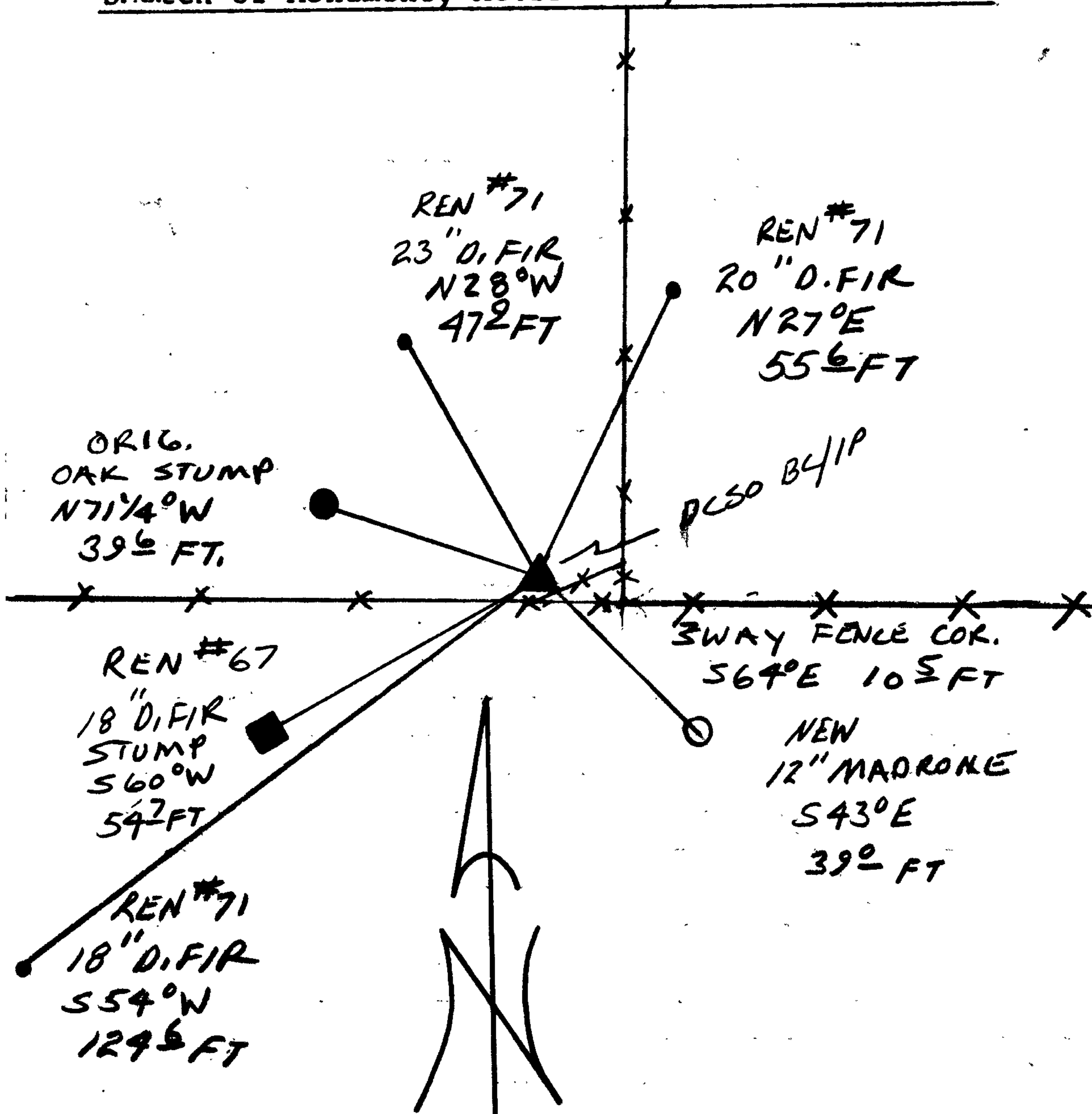
Monument Detail

N/A

New Accessories

12" MADRONE BARK SCRIBED" T29SR6W56 CS BT"
BEARS S43°E, 39.0 FT.

Sketch of Monument, Accessories, and General Area



Location & Comments

CORNER LIES ON A WESTERLY SLOPE.

Comp. Declin. 18°E
 Agency DCSO
 Party Chief RANDALL W. SMITH
 Notekeeper Randall W. Smith
 Witnesses STEPHEN J. FLAISE

Address

Surveyor's Seal

REGISTERED
 PROFESSIONAL
 LAND SURVEYOR

Larry E. Monrean

OREGON
 JULY 13, 1979
 LARRY E. MONREAN
 #1830