

GOVERNMENT CORNER RESTORATION FORM

FILED

JK

Township 25S Range 6W Sec. 31 County DOUGLAS

FEB 8 1990

State OR Date 1/31/90

No. _____ COUNTY SURVEYOR
DOUGLAS COUNTY, ORE.

Corner Designation

S31/S32
S6/S5

- Condition Report Only
- Not Found
- Renewed
- Unrecorded
- Surveyed In
- Referenced Out

MONUMENT DETAIL

Previous Renewals (#66 #185 T25-6)
(#79, #179 T26-6)

Monument(s) Found: (Condition and Source)

A 2 1/2" DIA. DCSO BRASS CAP ON A
1/4" O.D. IRON PIPE, PROTRUDES 6"
OUT OF GROUND, NOW BENT APPROX
12" NORTH OF PLUMB. REN #179

5/8" DIA. IRON ROD, PROTRUDES 9"
OUT OF GROUND, NOW BENT APPROX
15" NORTH OF PLUMB. (SOURCE UNKNOWN)

9" X 9" X 12" STONE NO MARKS
VISIBLE FOUND APPROX 2.0 FT
NORTH OF DCSO BC/IP'S PLUMB
POSITION (POSSIBLY FROM REN #79)

ABOVE 5/8" I.R. FOUND ALONG
NORTH SIDE OF DCSO BC/IP

DOUGLAS COUNTY SURVEYOR

T25S
S31/S32 R
S6/S5 6
W
T26S
1979

Accessories Found:

BEARINGS AND DISTANCES TAKEN TO PLUMB POSITION OF DCSO BC/IP
10" NOW 14" B. OAK WITH A FULLY HEALED DOUBLE BLAZE,
BEARS N 87 1/2° E, 59.9 FT (REC N 7° E, 61.3 SLOPE DIST.) FROM REN #79

6" NOW 14" MADRONE WITH FULLY HEALED BLAZES
BEARS N 36° W, 38.8 FT (AGREES WITH REC IN REN #79) FROM REN #79

12" NOW 14" MADRONE WITH PARTIALLY HEALED DOUBLE BLAZE
SCRIBING VISIBLE "T26 S 6W", BEARS S 31° E, 50.4 FT
(AGREES WITH REC) FROM REN #179

11" NOW 14" OAK WITH FULLY HEALED DOUBLE BLAZE
BEARS S 34 1/2° W, 158.5 FT (REC. S 33° W 158.5 FT) FROM REN #179

#193 T266 X
#196 T25-6 X

RENEWAL

Monument Set (Procedure and Description)

POSITION OF BENT DCSO BC/IP IS REFERENCED. DCSO BC/IP IS STRAIGHTENED AND RETURNED TO REFERENCED POSITION. BC/IP NOW PROTRUDES 3 IN. ABOVE GROUND. 5/8" I.R. IS STRAIGHTENED AND SET ALONG NORTH SIDE OF DCSO BC/IP. 5/8" I.R. NOW PROTRUDES 1 IN ABOVE GROUND. STONE IS PLACED ALONG EAST SIDE OF DCSO BC/IP.

Monument Detail

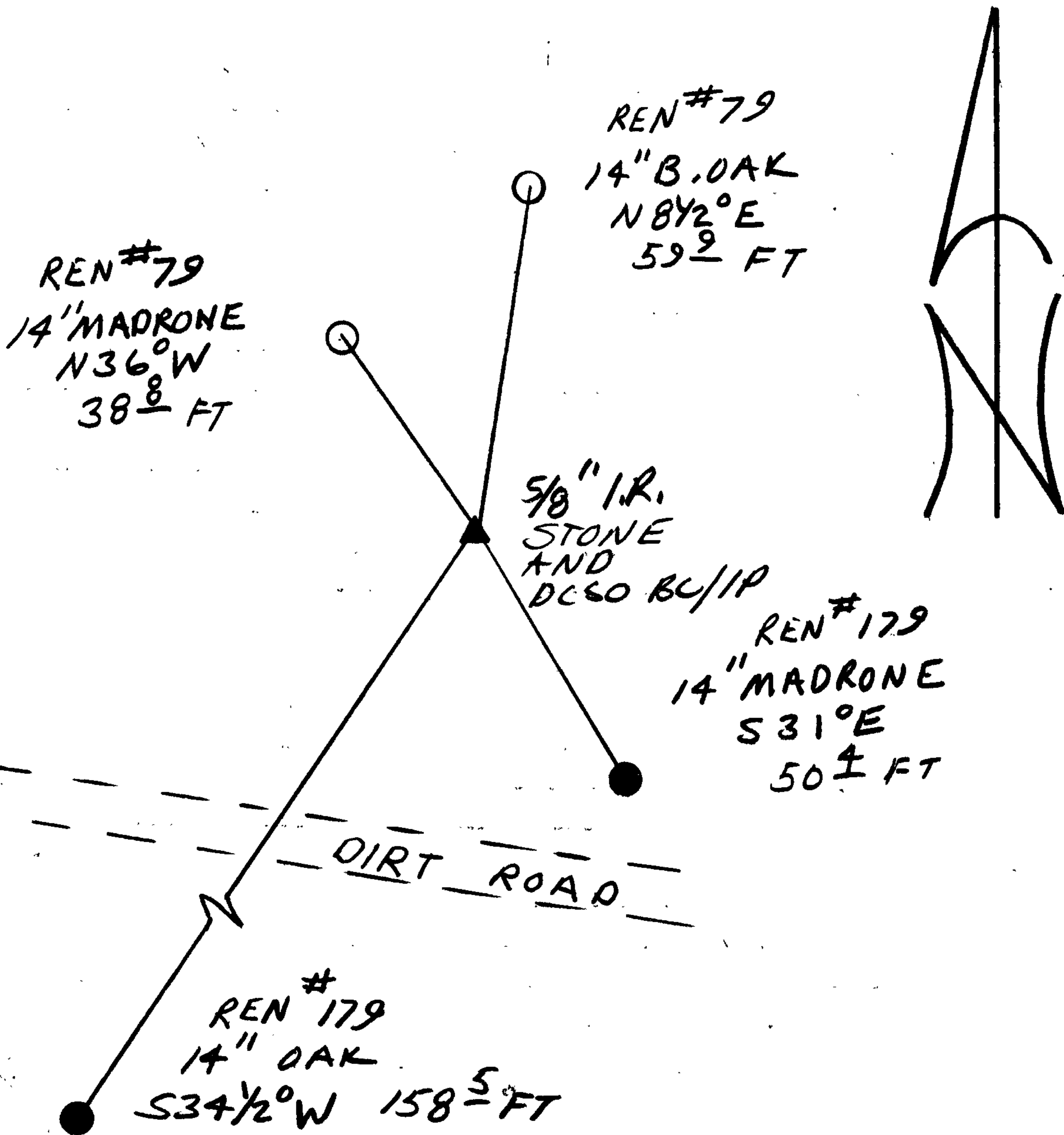
N/A

BC/IP MEASURES 36" LONG
5/8" I.R. MEASURES 50" LONG

New Accessories

NONE

Sketch of Monument, Accessories, and General Area



Location & Comments

CORNER LIES ON A NW-SE RUNNING RIDGE ON A BENCH APPROX. 50 FT NORTH OF A DIRT ROAD.

Comp. Declin. 18° EAST
Agency DCSO
Party Chief RANDALL W SMITH
Notekeeper Randall W Smith
Witnesses STEPHEN J FLAUSE

Address

REGISTERED'S Seal
PROFESSIONAL
LAND SURVEYOR

Larry E. Monrean

OREGON
JULY 13, 1979
LARRY E. MONREAN
#18882