

RENEWAL

Monument Set (Procedure and Description)

A 2 3/8" DIA. DCSO BRASS CAP ON A 1 3/8" O.D. BY 32 IN LONG IRON PIPE AT A POINT N 55° W 17.9 FT FROM PREVIOUSLY DESCRIBED "+" IN ROCK BLUFF. BC/IP PROTRUDES 14" ABOVE GROUND, IS SURROUNDED BY A 2 1/2 FT DIA MOUND OF SAND STONE.

Monument Detail

DOUGLAS COUNTY SURVEYORS

T 22 S
R M 1

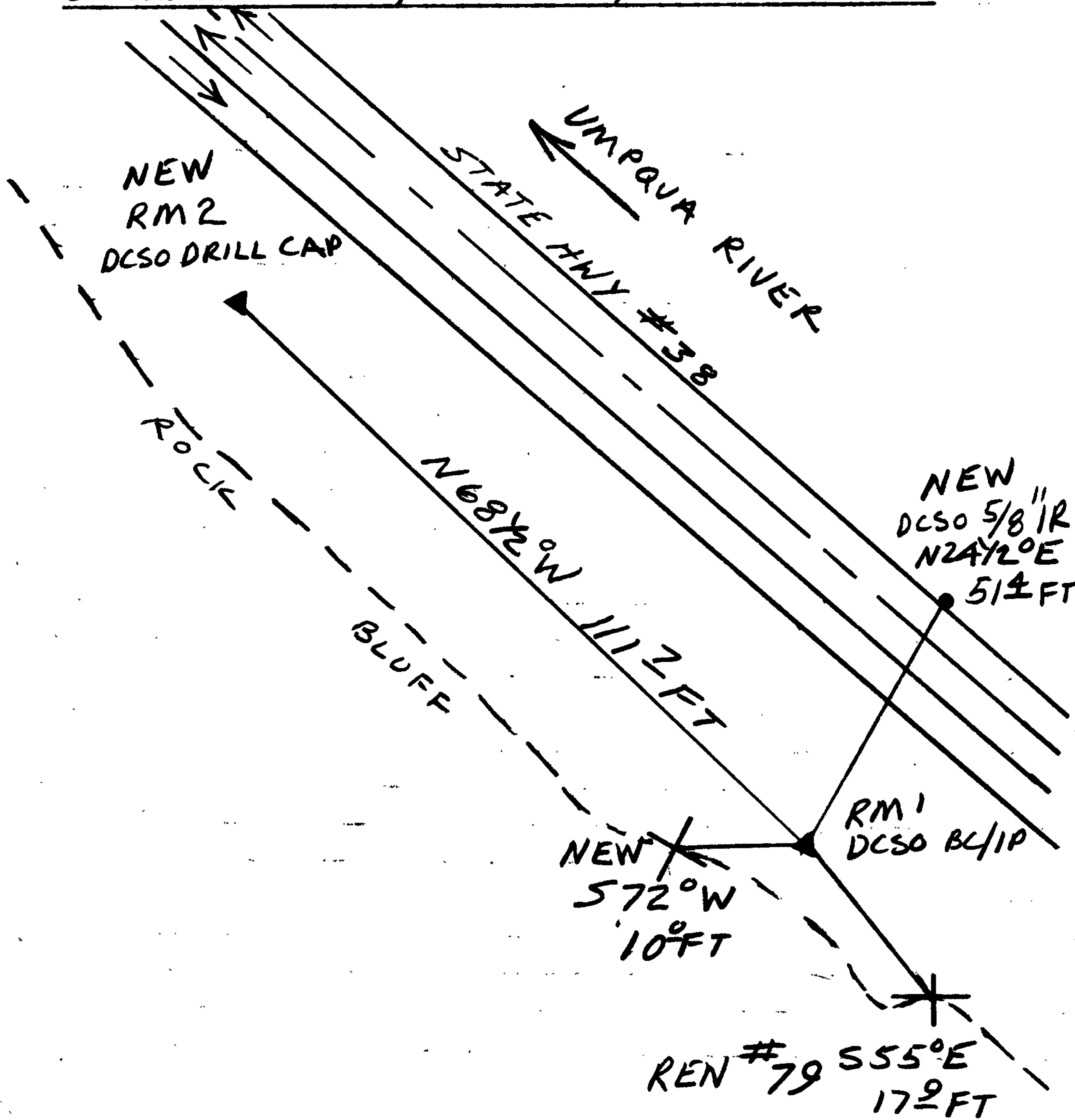
R 12 S 1 | S 6 R
W | W

RESET
1990

New Accessories

5/8" BY 30" LONG I.R. WITH DCSO ALUM. CAP STAMPED "B 0 1" PROTRUDES 3 IN. ABOVE GROUND UNDER EAST GUARD RAIL BEARS N 24 1/2° E, 51.4 FT.
A 5" "+" MARKED IN HIGH ROCK BLUFF APPROX 4 1/2 FT ABOVE GROUND, BEARS S 72° W, 10.0 FT.
DCSO DRILL CAP STAMPED "T 22 S R M 2 R 12 W S 1 S 6 R 11 W 1990" BEAR N 68 1/2° W, 111.7 FT

Sketch of Monument, Accessories, and General Area



Location & Comments

Comp. Declin. 18° E
Agency DCSO
Party Chief RANDALL W SMITH
Notekeeper Randall W Smith
Witnesses STEPHEN J FLAKE

Address

Surveyor's Seal

REGISTERED
PROFESSIONAL
LAND SURVEYOR

Larry E. Monrean

OREGON
JULY 13, 1979
LARRY E. MONREAN
#1830

GOVERNMENT CORNER RESTORATION FORM

FILED

JL

Township 22S Range 12 Sec. 1

County DOUGLAS

FEB 7 1990

State OR

Date 1/18/90

No. _____

COUNTY SURVEYOR
DOUGLAS COUNTY, ORE.

Corner Designation

RM 2

S1/S6

- Condition Report Only
- Not Found
- Renewed
- Unrecorded
- Surveyed In
- Referenced Out

Previous Renewals NONE

Monument(s) Found: (Condition and Source)

N/A

MONUMENT DETAIL

N/A

Accessories Found:

N/A

RENEWAL

Monument Set (Procedure and Description)

SET DCSD DRILL CAP 6 IN.
 BELOW GROUND IN SANDSTONE.
 TWO BOAT SPIKES ARE SET OVER
 DRILL CAP FOR FUTURE MAGNETIC
 DETECTION.

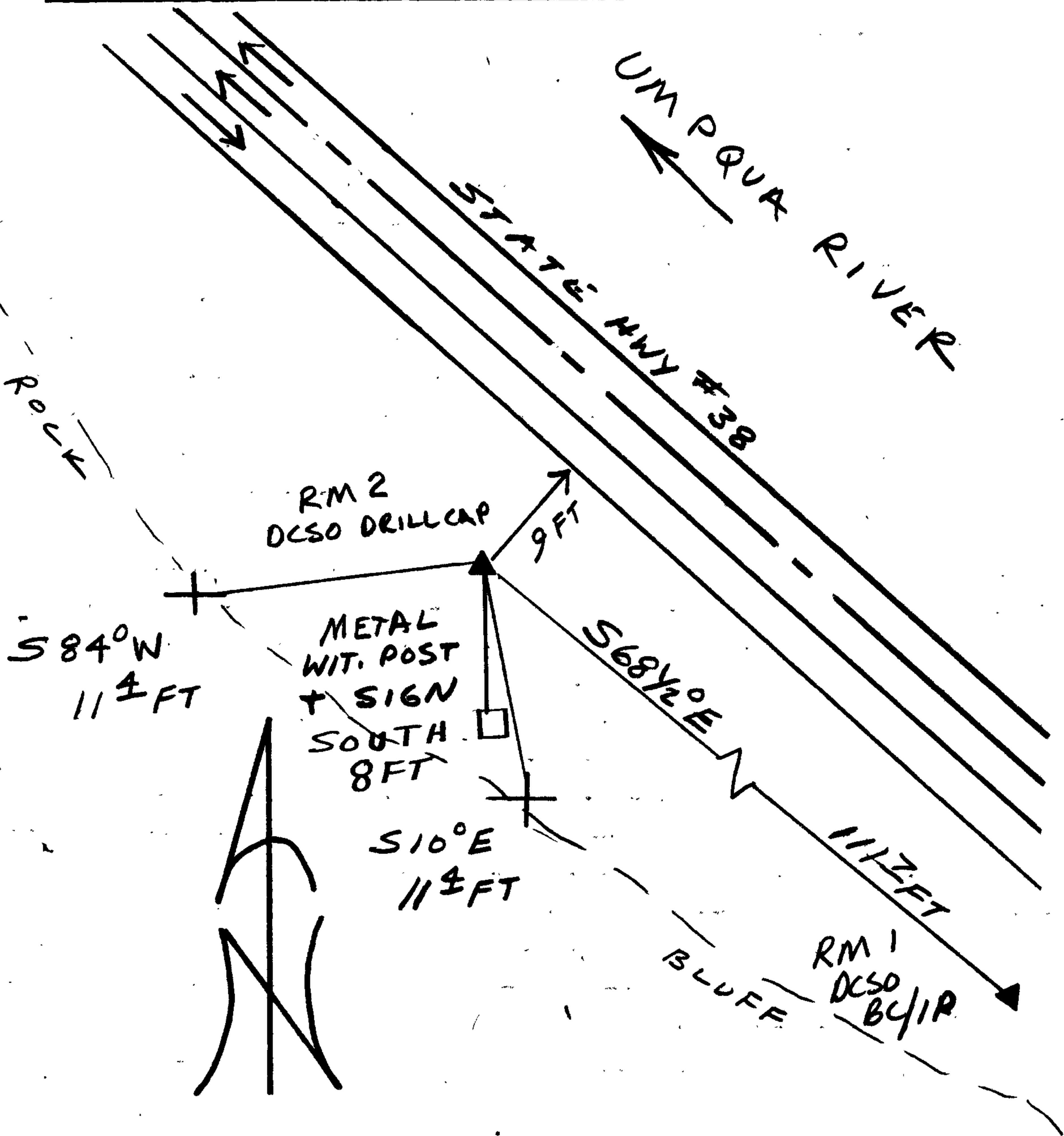
Monument Detail

DOUGLAS CO. SURVEYORS
 T22S
 R RM. 2 R
 12 S1 | S6 11
 W W
 1990
 OFFICE

New Accessories

A FOUND 6" "4" ON HIGH ROCK BLUFF APPROX 5 FT ABOVE
 DRILL CAP, BEARS S84°W, 11.4 FT
 MARKED A 6" "4" ON HIGH ROCK BLUFF APPROX 5 FT ABOVE
 DRILL CAP, BEARS S10°E, 11.4 FT
 A DCSD BCLIP MARKED "T22S RM1 R12W R11W S1 S6 RESET 1990"
 BEARS S68 1/2°E, 111.7 FT

Sketch of Monument, Accessories, and General Area



Location & Comments

Comp. Declin. 18°E
 Agency DCSD
 Party Chief RANDALL W SMITH
 Notekeeper Randall W Smith
 Witnesses STEPHEN J FLAISE

Address

Surveyor's Seal

REGISTERED
 PROFESSIONAL
 LAND SURVEYOR

Larry E. Monrean

OREGON
 JULY 13, 1979
 LARRY E. MONREAN
 #1830