

GOVERNMENT CORNER RESTORATION FORM

FILED

Township 26S Range 3W Sec. 25 County DOUGLAS

JAN 25 1990

State OR Date 1/19/90 No. _____

Corner Designation _____

COUNTY SURVEYOR
DOUGLAS COUNTY, ORE

$\frac{1}{4} \frac{S25}{S36}$

- Condition Report Only
- Not Found
- Renewed
- Unrecorded
- Surveyed In
- Referenced Out

Previous Renewals 1981 BLM D. RESURVEY

Monument(s) Found: (Condition and Source)

A 3/4" DIA. BLM BRASS CAP ON A
2 1/2" O.D. IRON PIPE, PROTRUDING 3 IN.
ABOVE GROUND

U.S. DEPT. OF THE INTERIOR

T26S R3W

$\frac{1}{4} \frac{S25}{S36}$

1981

BUR. OF LAND MANAGEMENT

Accessories Found:

BT'S FROM 1981 BLM D. RESURVEY
37" NOW 37" DIA. DOWN AND OUT OF POSITION D. FIR, WITH AN UNHEALED
SINGLE BLAZE SCRIBING VISIBLE "Y4S26 BT", ROOT HOLE
BEARS N151°W, 11.6 FT (AGREES WITH REC).

14" NOW 14" DIA. D. FIR WITH A FULLY HEALED SINGLE BLAZE,
BEARS S20°E, 26.7 FT (REC. S 22 1/2°E 26.7 FT).

#2504

C.S. File No. 64/5-5

RENEWAL

Monument Set (Procedure and Description)

Monument Detail

NONE

N/A

New Accessories

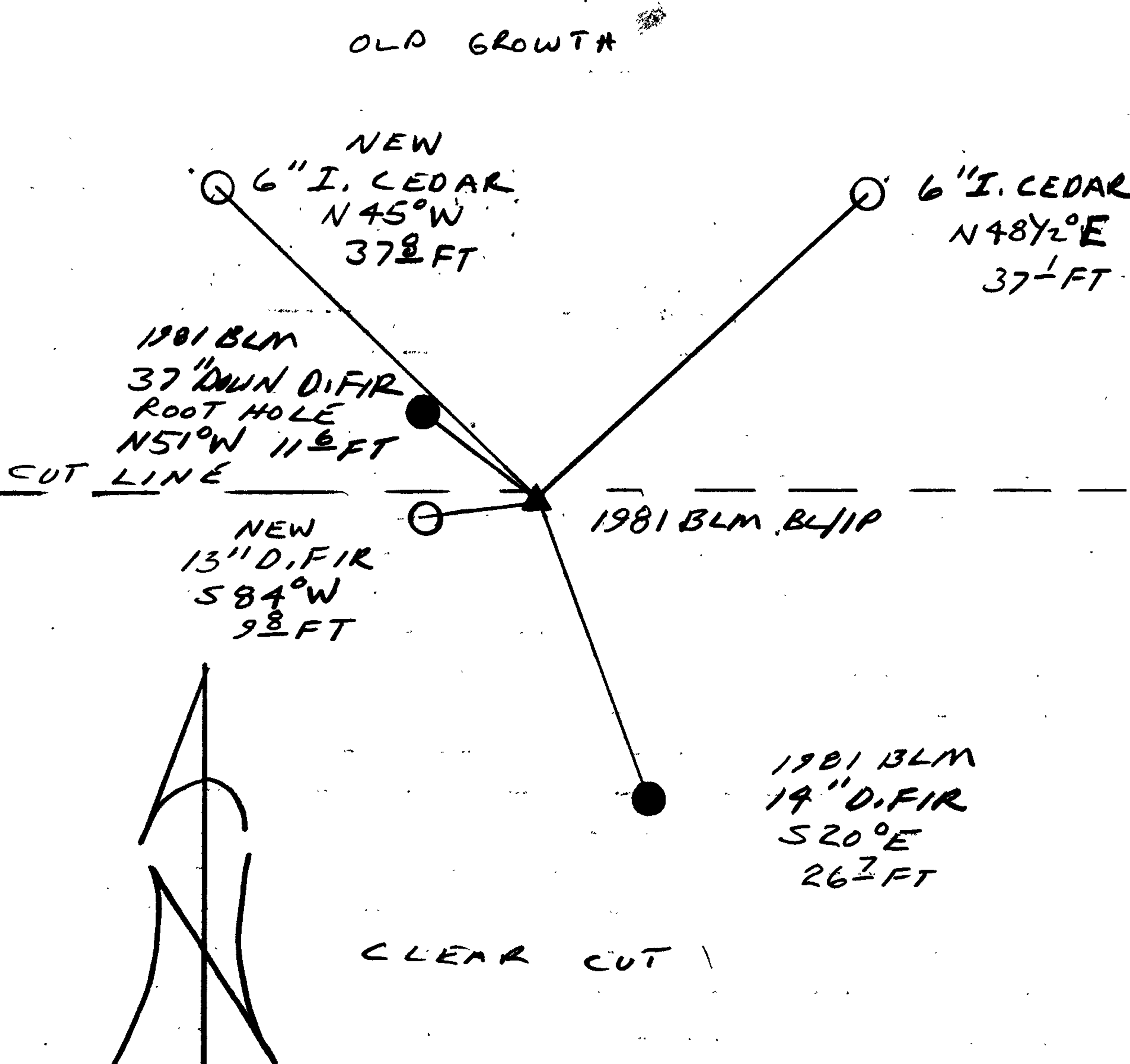
13" DIA. D. FIR DOUBLE BLAZED AND SCRIBED "1/4 S36CS BT"
BEARS S84°W, 9.8 FT.

6" DIA. I. CEDAR DOUBLE BLAZED AND SCRIBED "1/4 S25CS BT"
BEARS N45°W, 37.8 FT.

6" DIA. I. CEDAR DOUBLE BLAZED AND SCRIBED "1/4 S25CS BT"
BEARS N48 1/2°E, 37.1 FT.

Sketch of Monument, Accessories, and General Area

Location & Comments



CORNER LIES IN A EAST - WEST CUT LINE APPROX 300 NORTH EAST OF END OF ROAD.

Comp. Declin. 18°E
Agency DLSO
Party Chief RANDALL W SMITH
Notekeeper Randall W Smith
Witnesses STEPHEN J FLAUSE

Address

REGISTERED SEAL
PROFESSIONAL
LAND SURVEYOR

Larry E. Monrean

OREGON
JULY 13, 1979
LARRY E. MONREAN
#1830