

GOVERNMENT CORNER RESTORATION FORM

FILED

[Signature]

Township 22S Range 12W Sec. 1

County DOUGLAS

JAN 25 1990

State OR

Date 1/23/90

No. _____

COUNTY SURVEYOR
DOUGLAS COUNTY, ORE.

Corner Designation

E 1/4 S 1 | ONLY

- Condition Report Only
- Not Found
- Renewed
- Unrecorded
- Surveyed In
- Referenced Out

Previous Renewals #80 T22-12 #105 T22-11

MONUMENT DETAIL

Monument(s) Found: (Condition and Source)

2 1/2" DIA. DCSD BRASS CAP ON A
1 1/4" O.D. IRON PIPE, PROTRUDES
15" ABOVE GROUND.

COUNTY SURVEYOR'S OFFICE

T22S

R
12 1/4 S 1 | R
W 11
W

1971

Accessories Found:

18" NOW 20" DIA 4 FT HIGH HEMLOCK STUMP, WITH A
ROTTED PARTIALLY HEALED BLAZE SCRIBING VISIBLE
"1/4 S" BEARS N 40° E, 11.3 FT (AGREES WITH RECORD)
FROM REN #80

5" NOW 7" DIA 7 FT HIGH HEMLOCK STUMP, WITH A
PARTIALLY HEALED DOUBLE BLAZE SCRIBING VISIBLE "1/4 S 1 CSBT"
BEARS N 40° W, 48.3 FT (REL. N 40° W, 48.2 FT DISTANCE
IS A SLOPE MEASUREMENT) FROM REN #80

#234 T22-12
#162 T22-11 4

C.S. File No. 64/5-4

RENEWAL

Monument Set (Procedure and Description)

Monument Detail

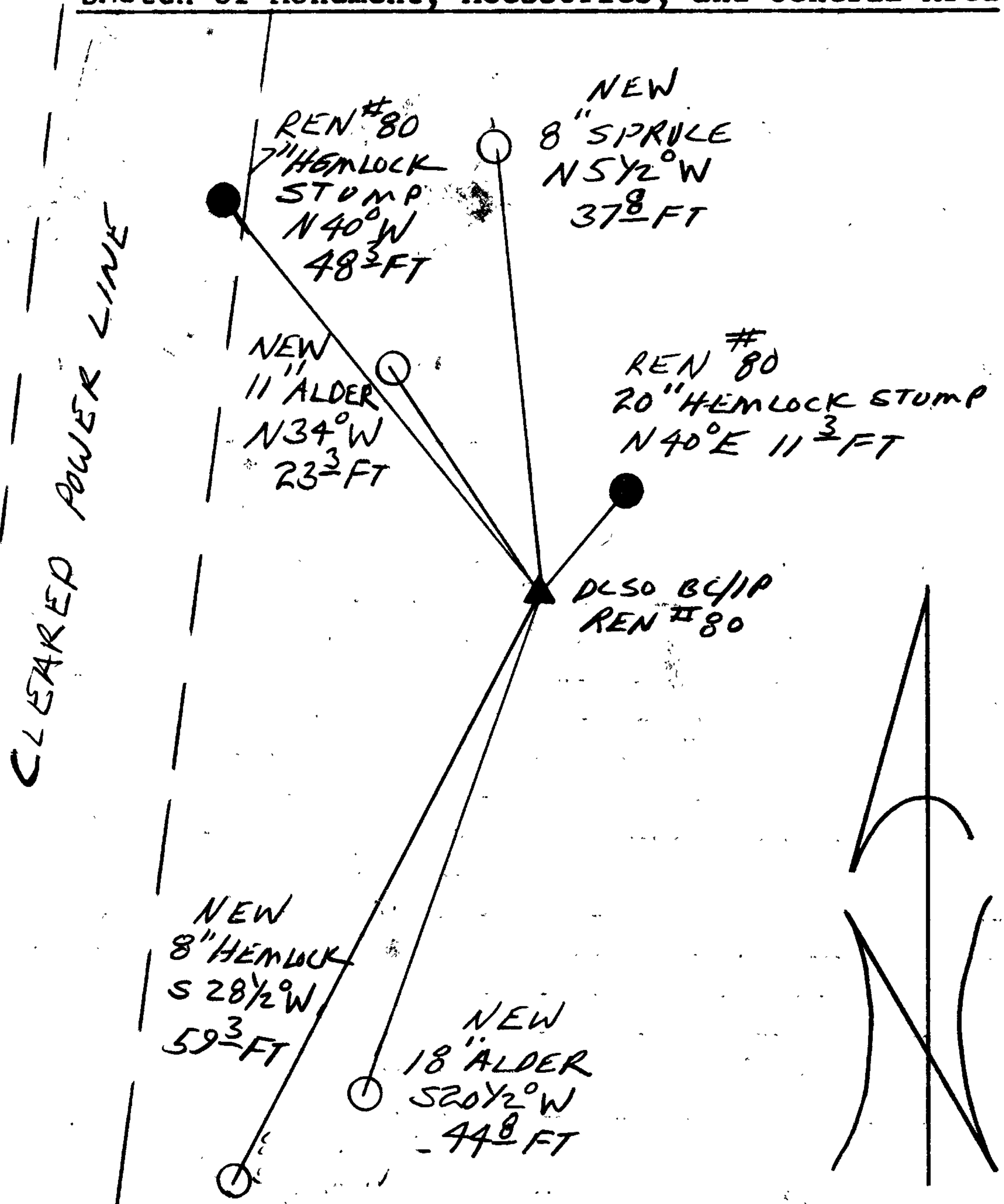
NONE

N/A

New Accessories

- 11" DIA. ALDER BARK SCRIBED "1/4 SICS BT" 4 FT ABOVE GROUND, BEARS N34°W, 23.3 FT.
- 8" DIA. SPRUCE DOUBLE BLAZED AND SCRIBED "1/4 SICS BT" BEARS N5 1/2° W, 37.8 FT.
- 18" DIA. ALDER DOUBLE BLAZED AND SCRIBED "1/4 SICS BT" BEARS S20 1/2° W, 44.8 FT
- 8" DIA. HEMLOCK DOUBLE BLAZED AND SCRIBED "1/4 SICS BT" BEARS S28 1/2° W, 59.3 FT

Sketch of Monument, Accessories, and General Area



Location & Comments

CORNER LIES ON A STEEP NORTHEAST SLOPE, APPROX. 250 FT SOUTH OF STATE HWY # 38, AND 95 FT EASTERLY OF A POWER LINE EASEMENT CLEARING.

Comp. Declin. 18° E
 Agency DLSO
 Party Chief RANDALL W SMITH
 Notekeeper Randall W Smith
 Witnesses STEPHEN J FLAISE

Address

Surveyor's Seal

REGISTERED
PROFESSIONAL
LAND SURVEYOR

Larry E. Mowman

OREGON
JULY 13, 1979
LARRY E. MOWMAN
#1830