

GOVERNMENT CORNER RESTORATION FORM

Township 29S Range 5W Sec. 19 County DOUGLAS JAN 19 1990

State OR Date 1/17/90 No. _____ COUNTY SURVEYOR DOUGLAS COUNTY, ORE

Corner Designation

$\frac{1}{4} \frac{S19}{S30}$

- Condition Report Only
- Not Found
- Renewed
- Unrecorded
- Surveyed In
- Referenced Out

Previous Renewals #130

MONUMENT DETAIL

Monument(s) Found: (Condition and Source)

A 2 1/2" DIA. DCSO BRASS CAP ON
A 1 3/8" O.D. BY 36" LONG IRON
PIPE IS FOUND OUT OF GROUND.

COUNTY SURVEYORS OFFICE

T29S R5W

$\frac{1}{4} \frac{S19}{S30}$

1962

Accessories Found:

36" NOW 24" DIA. 3 FT HIGH PONDEROSA PINE STUMP, NO
BLAZES OR MARKS VISIBLE, BEARS N33/4°W, 50.4 FT
(REC. N2°W, 49.5 FT, DIST. IS A POSSIBLE FACE MEAS.) ORIG. BT

ORIG. 24" SOUTHWEST PINE IS GONE PROBABLY SCRAPED OUT BY CAT WORK

20" NOW 27" DIA. PONDEROSA PINE WITH A FULLY HEALED DOUBLE BLAZE,
BEARS S46 1/2°W, 142.9 FT (REC. S47 1/2°W, 142.9 FT) FROM REN #130

7" NOW 25" DIA 2 1/2 FT HIGH CEDAR STUMP, EVIDENCE OF
BLAZE VISIBLE, BEARS S93/4°W, 150.9 FT (REC. S10 1/2°W,
150.9 FT) FROM REN #130.

RENEWAL

Monument Set (Procedure and Description)

RESET 1962 DCSO BC/IP AT A POINT DETERMINED FROM INTERSECTING DISTANCES FROM BEARING TREES (SEE ACCESSORIES FD). THE MARKS "RESET 1990" ARE ADDED TO BRASS CAP. BC/IP NOW PROTRUDES 6 IN ABOVE GROUND, AND IS SURROUNDED BY A 2 FT DIA. MOUND OF STONE.

Monument Detail

COUNTY SURVEYORS OFFICE
T29S R5W

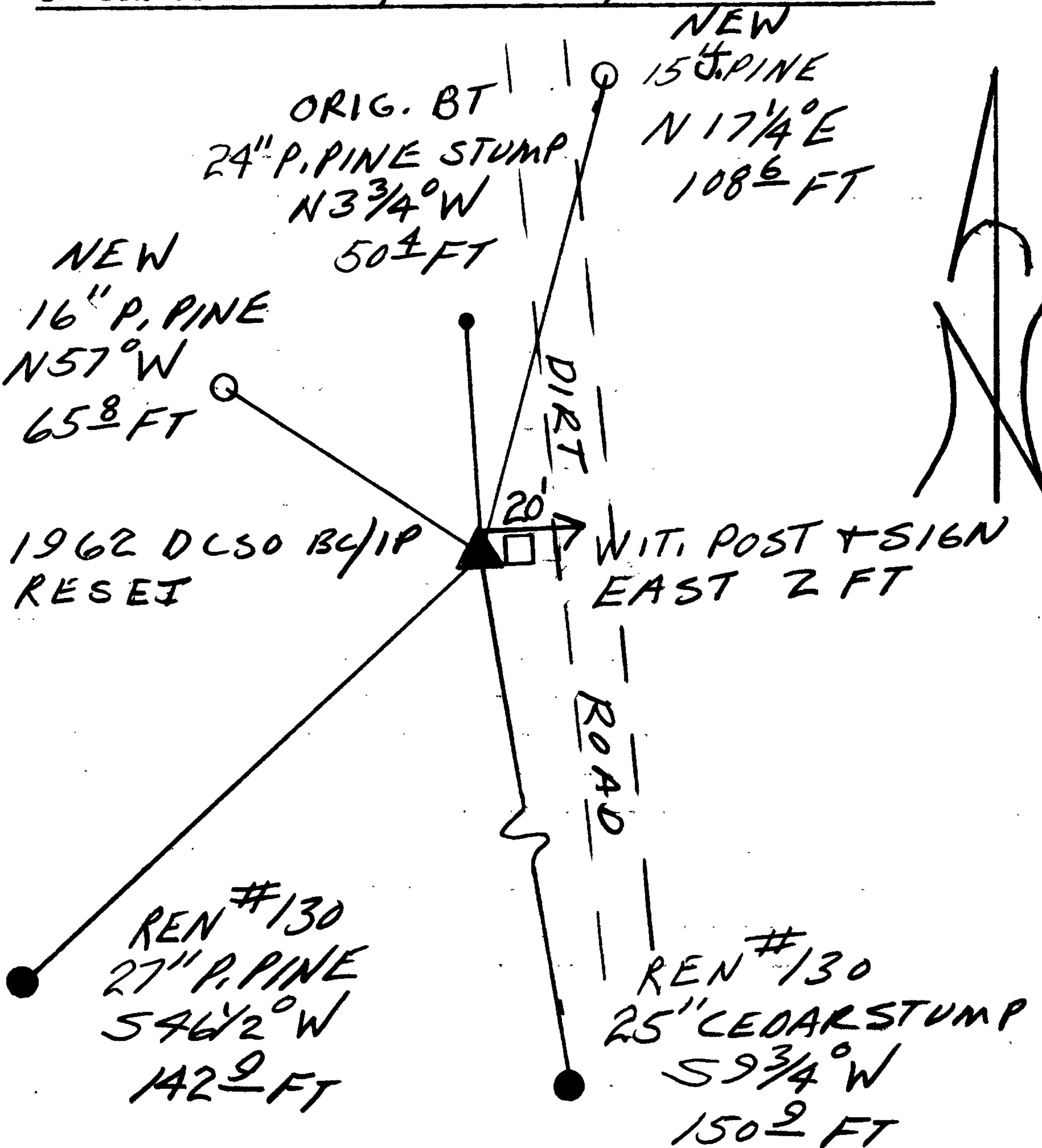
1/4 S19
S30
RESET 1990
1962

New Accessories

15" DIA. JEFF. PINE DOUBLE BLAZED AND SCRIBED "1/4 S19 CS BT"
BEARS N 17 1/4° E, 108.6 FT.

16" DIA. PONDEROSA PINE DOUBLE BLAZED AND SCRIBED "1/4 S19 CS BT"
BEARS N 57 1/2° W, 65.8 FT

Sketch of Monument, Accessories, and General Area



Location & Comments

CORNER LIES ON TOP OF A NORTH-SOUTH RIDGE, APPROX 20 FT WEST OF A DIRT ROAD. A METAL WIT. POST AND SIGN IS SET 2 FT EAST OF CORNER

Comp. Declin. 18° E
Agency DCSO
Party Chief RANDALL W SMITH
Notekeeper Randall W Smith
Witnesses STEPHEN J FLAKE

Address

Surveyor's Seal

REGISTERED
PROFESSIONAL
LAND SURVEYOR

Larry E. Monrean

OREGON
JULY 13, 1979
LARRY E. MONREAN
#1830