

GOVERNMENT CORNER RESTORATION FORM

Township 27S Range 6W Sec. 6 County DOUGLAS FILED

State OR Date 1/04/90 No. _____

JAN 10 1990

Corner Designation

1/4 S1/S6

COUNTY SURVEYOR

Condition Report

Not Found

Renewed

Unrecorded

Surveyed In

Referenced Out

MONUMENT DETAIL

Previous Renewals (T27-6) (#9, #153) (T27-7) (#189; #137)

Monument(s) Found: (Condition and Source)

A 2 1/2" DIA DCSSO BRASS CAP ON A 1 1/4" O.D. IRON PIPE, THAT PROTRUDES 3 IN. ABOVE GROUND. (PER REN #153)

A 1 1/4" O.D. IRON PIPE, THAT PROTRUDES 3 IN. ABOVE GROUND (PER REN #9)
1 1/4" O.D. IRON PIPE BEARS S58°E 1.2 FT FROM DCSSO BC/JP (AGREES WITH REN #153)

1" HOLLOW DRILL ROD NOTED IN REN #153 AS BEING 6" BELOW GROUND ALONG SOUTH EDGE OF 1 1/4" O.D. IRON PIPE NOT LOOKED FOR.

Accessories Found:

BEARING'S AND DISTANCES FROM DCSSO BC/JP

13" NOW 44" DIA. W. OAK WITH A FULLY HEALED BLAZE BEARS S 52 3/4° W, 23.1 FT (AGREES WITH REN #153, AND AGREES WITH ORIGINAL NOTES OF 13" S.W. BT). ORIG BT.

ORIG 12" W. OAK BEARING S 51° E, 55.4 FT IS GONE

10" NOW 27" DIA. W. OAK WITH A PARTIALLY HEALED BLAZE NO SCRIBING VISIBLE, BEARS S 66 3/4° E, 44.7 FT (REG. S 65° E, 44.7 FT FROM REN #153) BT PER REN #9

DOUGLAS COUNTY SURVEYOR T27S

R 7 W S1/S6 R 6 W 1/4 1978

#185 T27-6 X
#205 T27-7 X

RENEWAL

Monument Set (Procedure and Description)

Monument Detail

NONE

N/A

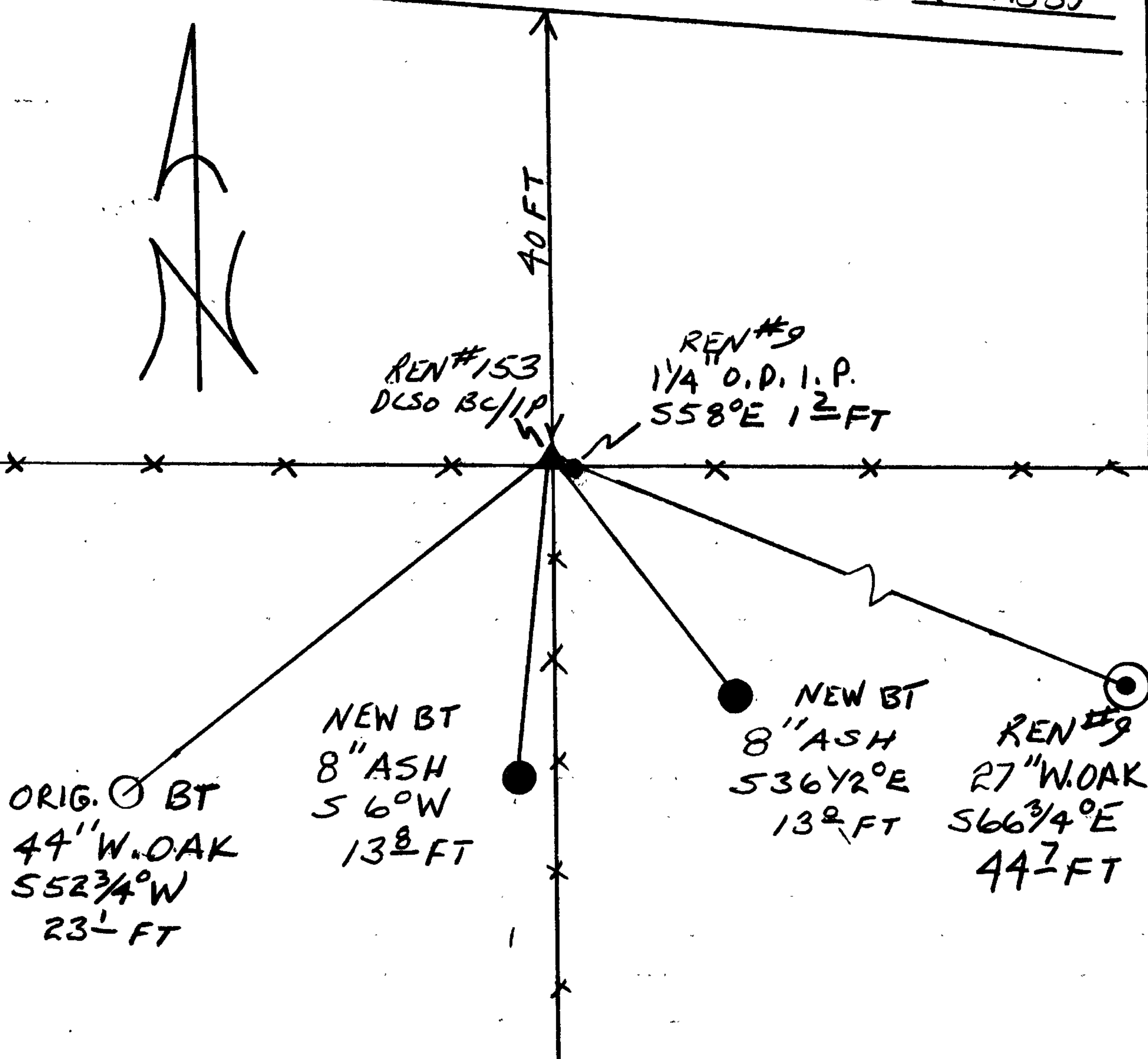
BEARINGS + DISTANCES FROM DCSO BC/IP
New Accessories

8" ASH DOUBLE BLAZED AND SCRIBED "Y456 CS BT"
BEARS S36 1/2° E, 13.0 FT.

8" ASH DOUBLE BLAZED AND SCRIBED "Y456 CS BT"
BEARS S6° W, 13.8 FT

Sketch of Monument, Accessories, and General Area

ORCHARD LANE (CO. RD #253)



Location & Comments

CORNER LIE'S AT THE INTERSECTIONS OF AN EAST - WEST AND SOUTH RUNNING FENCE LINES.

Comp. Declin. 18° E
Agency DCSO
Party Chief RANDALL W SMITH
Notekeeper Randall W Smith
Witnesses STEPHEN J FLAUSE

Address

Surveyor's Seal

REGISTERED PROFESSIONAL LAND SURVEYOR

Larry E. Monrean

OREGON
JULY 13, 1979
LARRY E. MONREAN
#1830