

GOVERNMENT CORNER RESTORATION FORM

FILED

Township 29S Range 7W Sec. 4 County DOUGLAS

State OR Date 12/12/89 No. \_\_\_\_\_

DEC 13 1989

Corner Designation

S5/S4  
S8/S9

COUNTY SURVEYOR  
DOUGLAS COUNTY, ORE

- Condition Report Only
- Not Found
- Renewed
- Unrecorded
- Surveyed In
- Referenced Out

Previous Renewals #5, #59 AND TWO 1955 BLM SURVEYS

MONUMENT DETAIL

Monument(s) Found: (Condition and Source)

A 1955 GLO, 2 1/2" DIA BRASS CAP  
ON A 2" O.D. IRON PIPE, 4 IN. BELOW  
GROUND. BC/IP LEANS 0.3 FT  
NORTHEAST OF PLUMB POSITION.  
(FROM 1955 BLM SURVEY)

U.S. GENERAL LAND OFFICE SURVEY

T 29 S R 7 W

S5/S4  
S8/S9

1955

A 3" O.D. PLUMB IRON PIPE  
4" BELOW GROUND. IRON PIPE IS  
ALONG SOUTHWEST SIDE OF GLO  
BC/IP. (FROM REN #59).

Accessories Found:

BEARING AND DISTANCE TAKEN TO PLUMB POSITION OF GLO BC/IP  
14" NOW 19" DIA. 1 FT HIGH MAPLE STUMP WITH ROTTED OUT CENTER  
A LOWER BLAZE IS VISIBLE AND SCRIBE MARK "S" FOUND.  
BEARS N10°E 249.5 FT. (AGREES WITH RECORD) 1955 BLM BT

NO OTHER BT'S FOUND

RENEWAL

Monument Set (Procedure and Description)

6.0. BC/IP RETURNED TO PLUMB POSITION.

Monument Detail

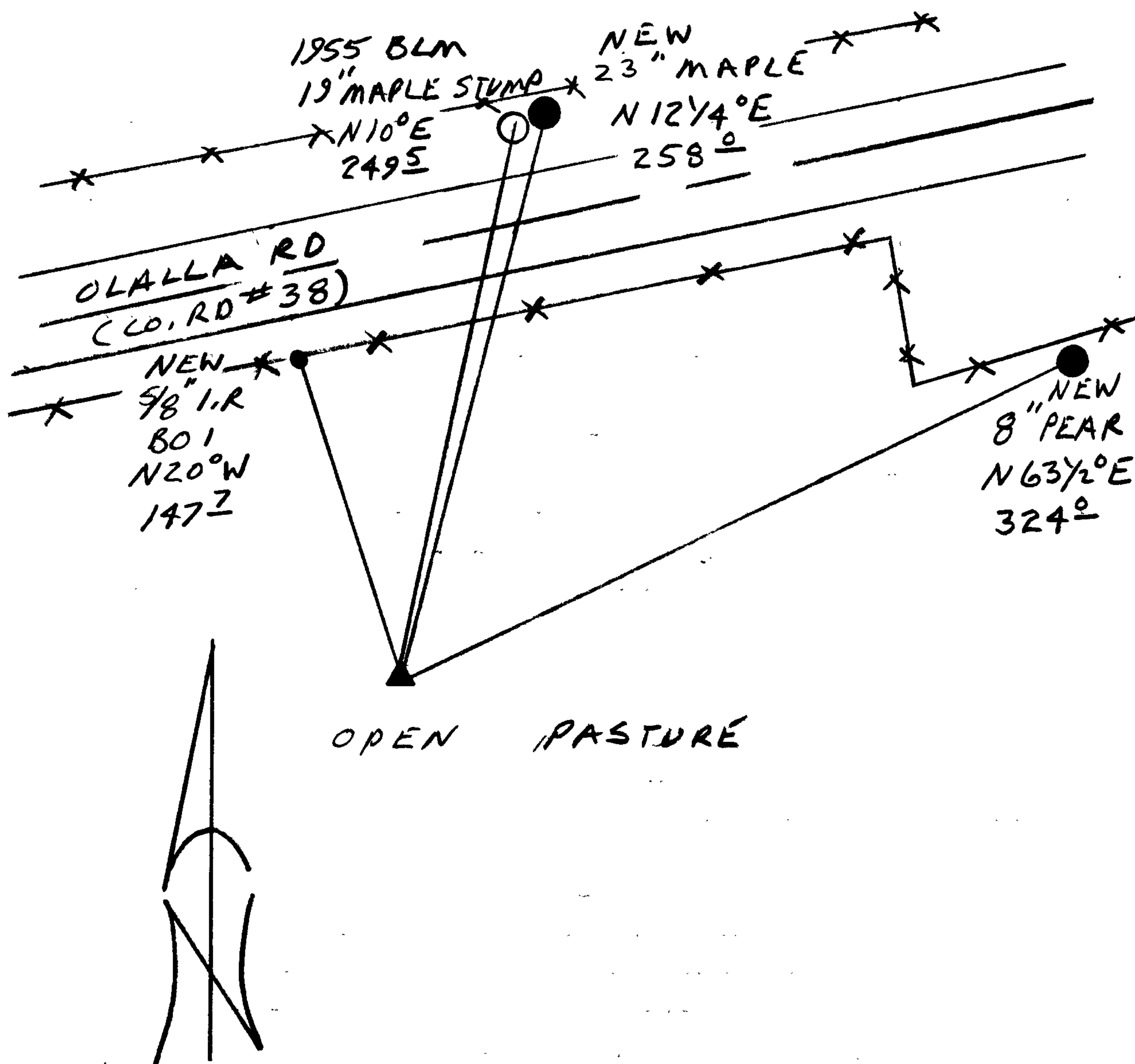
N/A

New Accessories

23" DIA. MAPLE DOUBLE BLAZED AND SCRIBED "T29S R7W S4 CS BT" BEARS N 12 1/4° E, 258.0 FT

8" DIA. PEAR TREE, BARK FLATTENED AND BARK SCRIBED "T29S R7W S4 CS BT" BEARS N 63 1/2° E, 324.0 FT.

5/8" BY 30" LONG IRON ROD WITH A DCSD ALUMINUM CAP STAMPED "BO 1" BEARS N 20° W 147.7 FT (IN R/FENCE LINE) Sketch of Monument, Accessories, and General Area



Location & Comments

CORNER LIES APPROX 175 FT SOUTH OF COUNTY ROAD IN AN OPEN PASTURE. MONUMENTS ARE 4 IN. BELOW GROUND.

CORNER IS APPROX. S 9° E 25 FT FROM A NATURAL SPRING.

Comp. Declin. 18° E  
Agency DCSD  
Party Chief RANDALL W SMITH  
Notekeeper Randall W Smith  
Witnesses STEPHEN J FLAUSE

Address

Surveyor's Seal

REGISTERED PROFESSIONAL LAND SURVEYOR

Larry E. Monrean

OREGON JULY 13, 1979 LARRY E. MONREAN #1830