

GOVERNMENT CORNER RESTORATION FORM

FILED

Township 27 S Range 4 W Sec. 21 County DOUGLAS

State OR Date 10/9/89 No. \_\_\_\_\_

OCT 11 1989

Corner Designation

COUNTY SURVEYOR  
DOUGLAS COUNTY, ORE

S 21 | S 22  
S 28 | S 27

- Condition Report Only
- Not Found
- Renewed
- Unrecorded
- Surveyed In
- Referenced Out

MONUMENT DETAIL

Previous Renewals #7, #37

Monument(s) Found: (Condition and Source)

A 1 3/8" DIA. AXLE PROTRUDES  
8" ABOVE GROUND (SET BY B.B. IRVING  
IN 1937, SEE REN #7)

AN "L" SHAPED IRON ROD, TOP  
MEASURES 2" X 1", ROD IS 1" DIA.  
PROTRUDES 1" ABOVE GROUND.  
BEARS S 1/2° W, 0.7 FT FROM AXLE  
(SOURCE UNKNOWN)

N/A

Accessories Found:

MEASUREMENTS TAKEN FROM AXLE  
NO EVIDENCE OF ANY ORIGINAL BT'S FOUND  
BT'S FROM REN #7  
24" B. OAK BEARING N 72° W, 18.5 FT IS GONE

18" NOW 28" DIA. W. OAK WITH A FULLY HEALED DOUBLE BLAZE  
BEARS S 1/2° W, 137.0 FT (REC S 1/2° W, 135.6 FT DIST. POSSIBLE  
FACE MEASUREMENT).

18" NOW 36" DIA. B. OAK NO BLAZES VISIBLE BEARS N 75° E  
73.0 FT (AGREES WITH REC.)

18" B. OAK BEARING N 89° E, 169.7 FT IS GONE

BT'S FROM REN #37

9" NOW 30" DIA. D. FIR WITH A FULLY HEALED DOUBLE BLAZE,  
BEARS N 51° E, 25.6 FT (AGREES WITH REC.)

5" NOW 25" DIA. D. FIR WITH A FULLY HEALED DOUBLE BLAZE,  
BEARS N 47° W, 20.5 FT (AGREES WITH REC.)

RENEWAL

Monument Set (Procedure and Description)

Monument Detail

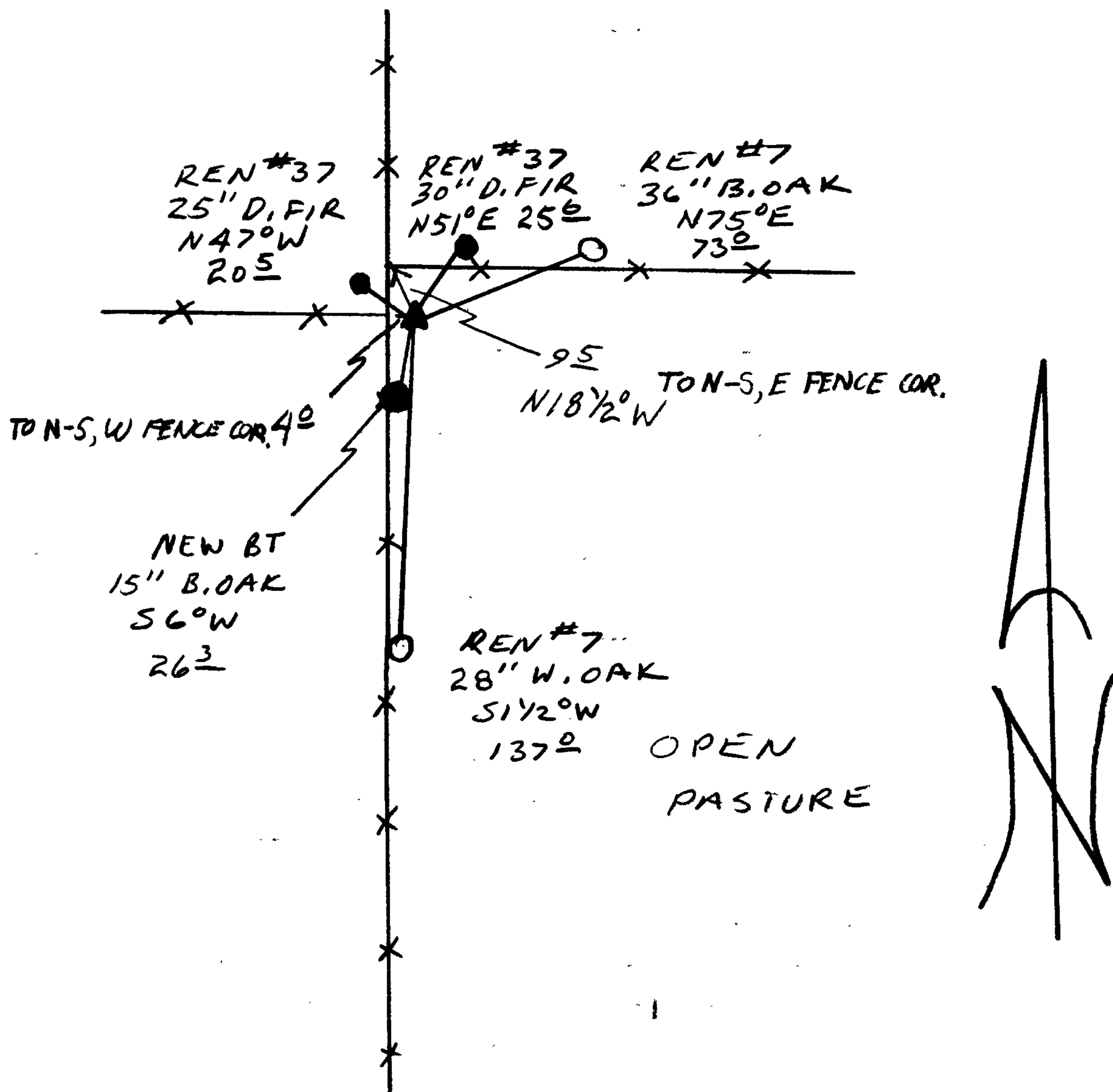
BRASS CAP IRON PIPE NOT SET.

N/A

New Accessories

15" DIA. B. OAK DOUBLE BLAZED AND SCRIBED "T275 R4WS28 CS BT", BEARS S6°W, 26.3 FT.

Sketch of Monument, Accessories, and General Area



Location & Comments

CORNER LIES AT NORTH WEST CORNER OF AN OPEN PASTURE

Comp. Declin. 18°E  
Agency DCSO  
Party Chief RANDALL W SMITH  
Notekeeper Randall W Smith  
Witnesses STEPHEN J FLAUSE

Address

Surveyor's Seal

REGISTERED  
PROFESSIONAL  
LAND SURVEYOR

*Larry E. Monrean*

OREGON  
JULY 13, 1979  
LARRY E. MONREAN  
#1830