

GOVERNMENT CORNER RESTORATION FORM

Township 24S Range 6W Sec. 7 County DOUGLAS

State OR Date 8/29/89 No. \_\_\_\_\_

Corner Designation

1/4 S7 | S8

- Condition Report Only
- Not Found
- Renewed
- Unrecorded
- Surveyed In
- Referenced Out

Previous Renewals #100

Monument(s) Found: (Condition and Source)

DCSO 2 1/2" DIA BRASS ON A 1 1/4" O.D. BY 30" LONG IRON PIPE, OUT OF GROUND UP AGAINST BASE OF ORIGINAL NORTHEAST BT.

FRACTURED STONE LARGEST PIECE MEASURES 15" X 9" X 5" AT POSITION OF CORNER, NO MARKS FOUND. (ORIG. STONE WAS 20" X 12" X 6", 15 IN IN GROUND MARKED 1/4 ON WEST FACE)

COUNTY SURVEYORS OFFICE

T24S R6W

1/4 S7 | S8

1970

Accessories Found:

45" NOW 46" DIA D.FIR WITH A FULLY HEALED BLAZE, BEARS N 8 1/4° E, 11.9 FT (AGREE'S WITH REC.) ORIG. BT

19" NOW 36" DIA, 4 FT HIGH D.FIR STUMP WITH A METAL CAP ON TOP. ALL BARK GONE FROM STUMP. A PARTIALLY HEALED SINGLE BLAZE WITH SCRIBING VISIBLE "4" (RESCRIBED IN REN #100) BEARS N 35° W, 31.7 FT. ORIG. BT

#135-X

64/1-18

RENEWAL

Monument Detail

Monument Set (Procedure and Description)

POSITION OF CORNER DETERMINED FROM BEARINGS AND DISTANCES TO ORIGINAL BEARING TREES. 1970 DLSD BC/1P IS SET AT REFERENCED POSITION AND NOW PROTRUDES 2 IN ABOVE GROUND. A MOUND OF STONE IS SET ALONG NORTHERLY SIDE OF BRASS CAP. THE MARKS "RESET 1989" ARE ADDED.

COUNTY SURVEYORS OFFICE  
T245 R6W

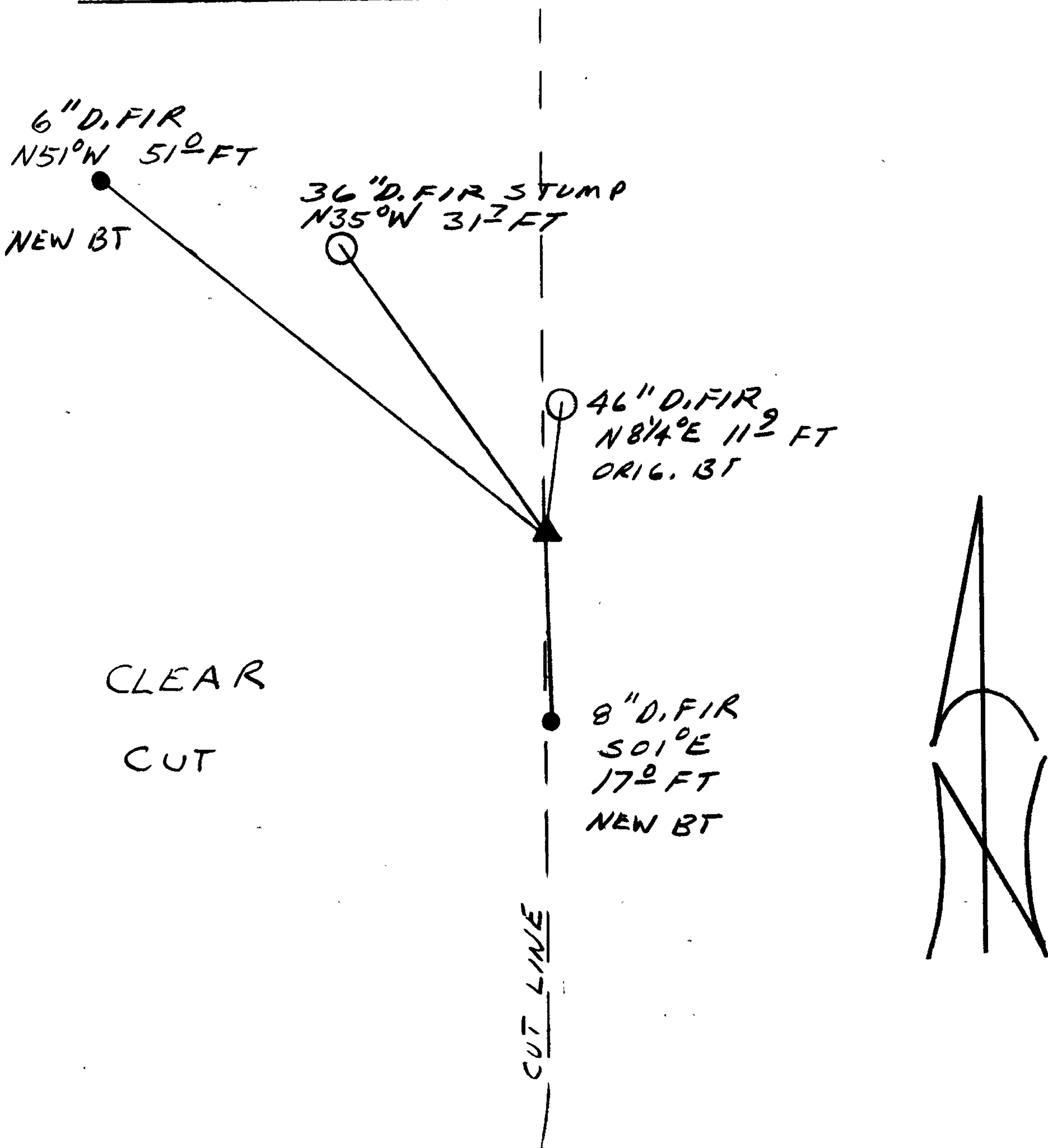
1/457/58  
RESET 1989  
1970

New Accessories

6" DIA. D.FIR DOUBLE BLAZED AND SCRIBED "1/457 CS BT"  
BEARS N51°W, 51.0 FT

8" DIA. D.FIR DOUBLE BLAZED AND SCRIBED "1/458 CS BT"  
BEARS S01°E, 17.0 FT

Sketch of Monument, Accessories, and General Area



Location & Comments

CORNER LIES ON A STEEP NORTH SLOPE ON A NORTH-SOUTH CUT LINE, NEW CLEAR CUT IS TO THE WEST. CORNER IS APPROX. 150 FT NORTHEAST OF LANDING AT END OF ROAD

Comp. Declin. 18°E  
Agency DLSD  
Party Chief RANDALL W SMITH  
Notekeeper Randall W Smith  
Witnesses STEPHEN J. FLAUSE

Address

Surveyor's Seal

REGISTERED  
PROFESSIONAL  
LAND SURVEYOR

*Larry E. Monrean*

OREGON  
JULY 13, 1979  
LARRY E. MONREAN  
#1830

Rm. 205 JUSTICE HALL  
ROSEBURG, OR 97470

DOUGLAS COUNTY SURVEYOR

PH. 440-4272

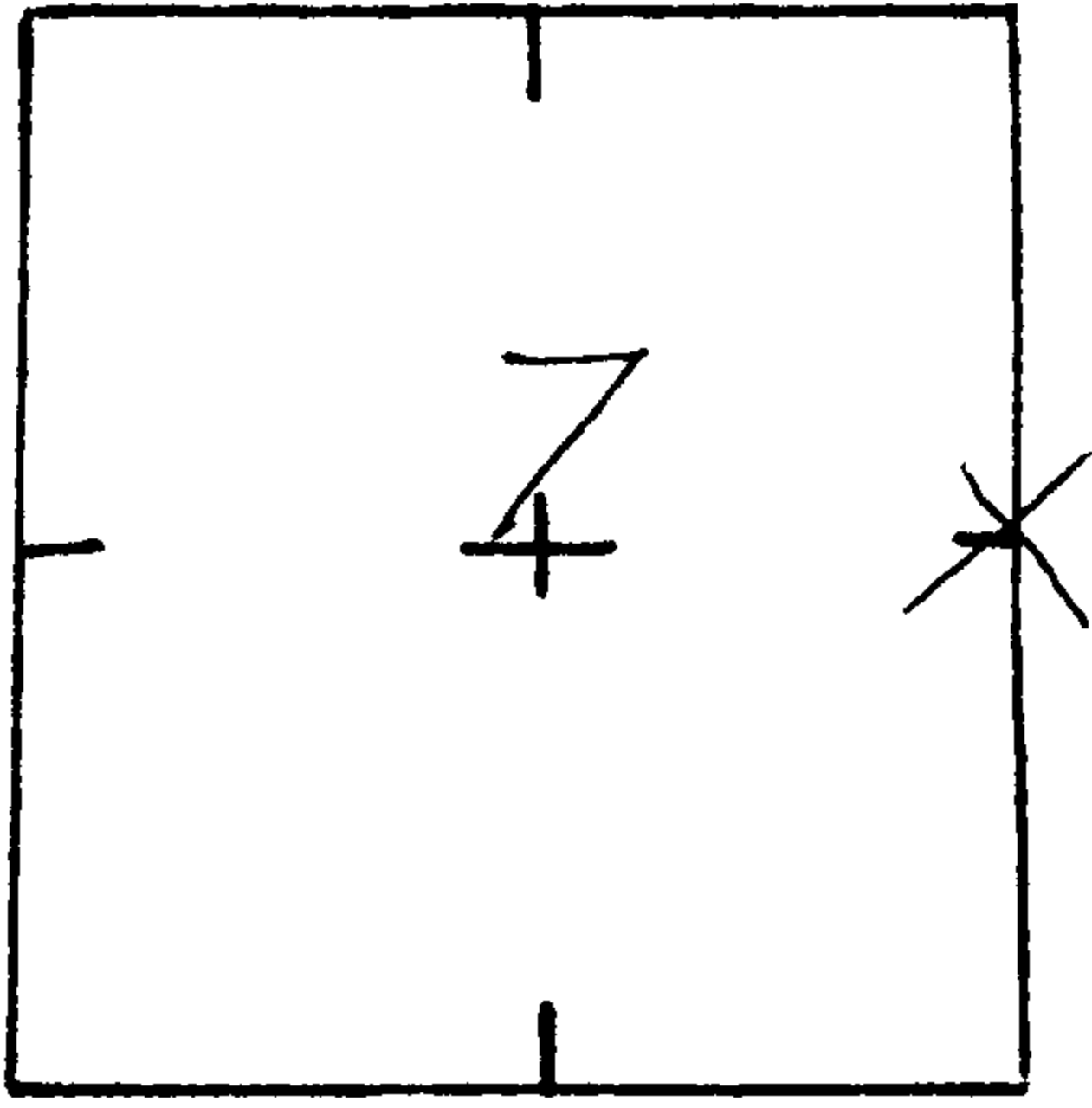
CORNER RENEWAL REQUEST

Section 1/4 7/8 Twp. 24 Rge. 6

Date 8/28/89

Condition of Corner and Accessories: RECENT TIMBER CUT.

FOUND <sup>1970</sup> CO. CAP OUT OF GROUND - (LOOKED AS IF HAD NEVER BEEN SET) BOTH B.T.S ARE THERE. (ONE IS A STUMP) OLD GROWTH BT STILL STANDING - LAYED CAP BEHIND.



TO REACH: (Please show approximate distances, clearcuts, roads, fences, etc.)

Highway 138 - 21/2 UP YELLOW CREEK # 24 67.2  
TAKE ROCK ROAD CLEAR TO TOP - CORNER JUST OFF LANDING.

Notify immediately prior to renewal visit? Yes  No

Notify following renewal visit? Yes  No

Is corner in immediate danger of being lost or disturbed? Yes  No

Name CRAIG HOLT

Address BLM

Telephone 672-4491 X. 296

ADDITIONAL COMMENTS

Jim Rabbe  
Notified  
7/7/89  
8/28/89

30" LONG

COUNTY SURVEYORS OFFICE  
T248 L6W  
1/4 57/58

1970

