

GOVERNMENT CORNER RESTORATION FORM

Township 28S Range 5W Sec. 28 County DOUGLAS

State OR Date 8/8/89 No. _____

Corner Designation

S29 | S28
S32 | S33

- Condition Report Only
- Not Found
- Renewed
- Unrecorded
- Surveyed In
- Referenced Out

Previous Renewals # 37, # 74

Monument(s) Found: (Condition and Source)

A 1/4" I.D. IRON PIPE (REC 2" I.P.)
 PROTRUDING 5 IN. ABOVE GROUND.
 FROM REN # 37

MONUMENT DETAIL

N/A

Accessories Found:

12" NOW ROTTED OAK OF INDETERMINABLE SIZE NO SCRIBING
BLAZES OR AXE MARKS SEEN BEARS N 36 3/4° E, 75.2 FT
(AGREES WITH RECORD) POSSIBLE ORIG. BT

15" NOW 30" DIA. 2 1/2 FT HIGH OAK STUMP WITH POSSIBLE
BLAZE SEEN FROM TOP, BEARS N 40° E, 74.7 FT
(REC. N 40° E, 74 FT POSSIBLE FACE MEASUREMENT)
FROM REN # 37.

12" NOW 15" DIA W. OAK WITH A FULLY HEALED DOUBLE BLAZE
BEARS N 28° W, 185.0 FT (AGREES WITH RECORD) FROM REN # 37

11" NOW 18" DIA. W. OAK WITH A FULLY HEALED SINGLE
BLAZE BEARS N 62° E, 139.3 FT (AGREES WITH RECORD)
FROM REN # 74. (THIS TREE TO BE CUT IN NEAR FUTURE).

#153 v

RENEWAL

Monument Set (Procedure and Description)

A 2 3/8" DIA DCSO BRASS CAP ON A 1 3/8" O.D BY 32" LONG IRON PIPE IS SET IN GROUND AT REFERENCED POSITION OF REN #37 1 1/4" I.D. IRON PIPE. DCSO BC/IP PROTRUDES 6 IN ABOVE GROUND, 1 1/4" IRON PIPE IS SET ALONG NORTH EDGE OF DCSO BC/IP, AND PROTRUDES 5 IN ABOVE GROUND.

1 1/4" I.D. IRON PIPE FROM REN #37 MEASURED 23 1/2" LONG

Monument Detail

DOUGLAS COUNTY SURVEYORS
T 285

S29 | S28 R
S32 | S33 5
W

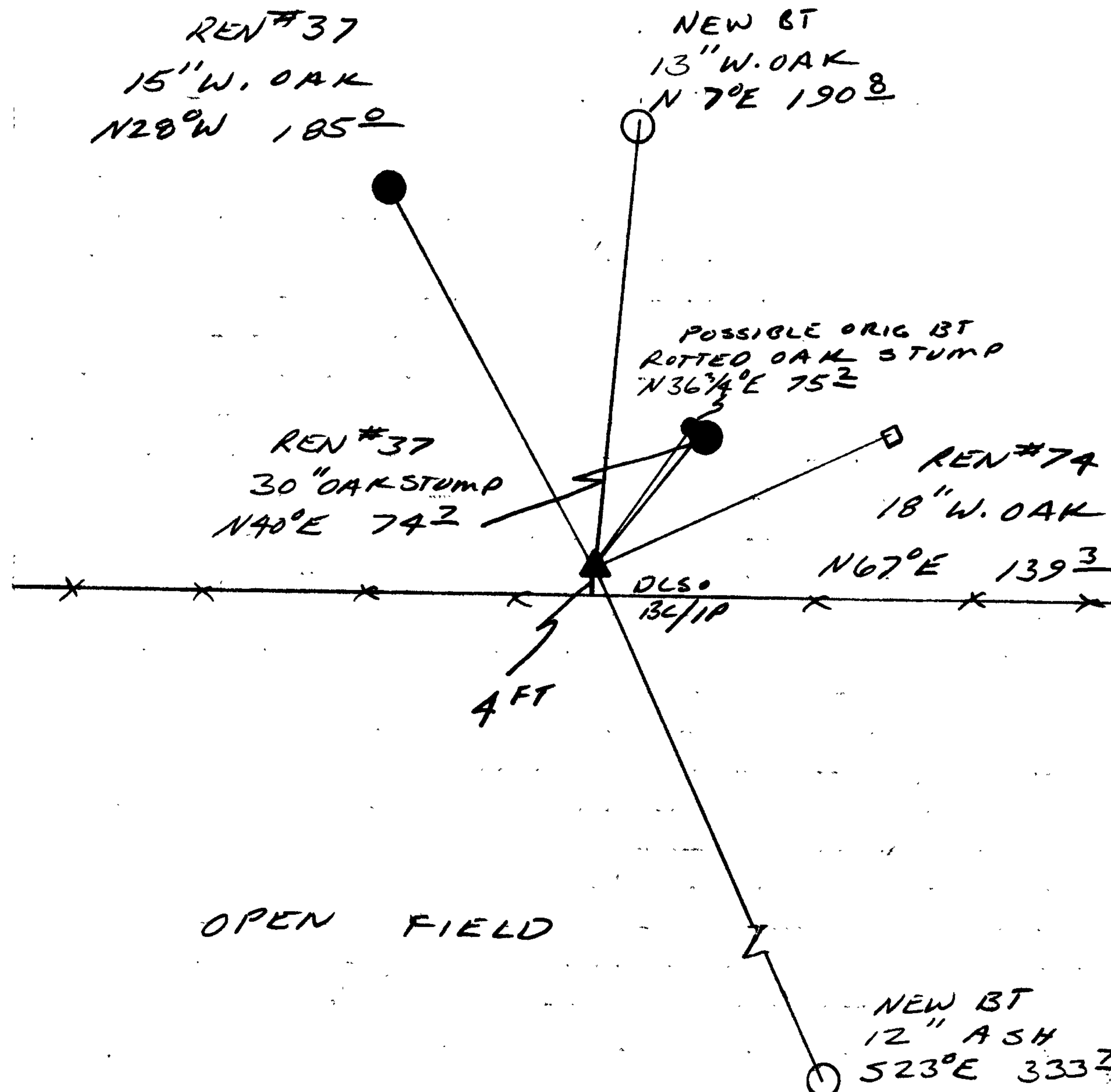
1989
OFFICE

New Accessories

13" DIA. W. OAK DOUBLE BLAZED AND SCRIBED "T285 R5W S28 CS BT"
BEARS N 7° E, 190 2 FT

12" DIA ASH (NORTHERLY TREE IN A CLUSTER OF ASH) DOUBLE BLAZED AND SCRIBED "T285 R5W S33 CS BT" BEARS S 23° E, 333 2 FT.

Sketch of Monument, Accessories, and General Area



Location & Comments

CORNER LIES 4 FT NORTH OF A EAST - WEST FENCE LINE ON THE WEST EDGE OF A SMALL SOUTHERLY RUNNING DRAW. NO TREE'S AT A REASONABLE DISTANCE SOUTH EAST OF CORNER

Comp. Declin. 18° E
Agency DCSO
Party Chief RANDALL W SMITH
Notekeeper *Randall W Smith*
Witnesses STEPHEN J FLAUSE

Address

Surveyor's Seal

REGISTERED
PROFESSIONAL
LAND SURVEYOR

Larry E. Monrean

OREGON
JULY 13, 1979
LARRY E. MONREAN
#1830