

sh

GOVERNMENT CORNER RESTORATION FORM

Township 30 S Range 5 W Sec. 3 County DOUGLAS SEP 27 1989

State OR Date 9/22/89 No. \_\_\_\_\_ COUNTY SURVEYOR DOUGLAS COUNTY, ORE.

Corner Designation

N 1/16  
S4 | S3

- \_\_\_\_\_ Condition Report Only
- \_\_\_\_\_ Not Found
- Renewed
- \_\_\_\_\_ Unrecorded
- \_\_\_\_\_ Surveyed In
- \_\_\_\_\_ Referenced Out

Previous Renewals M 39-45

Monument(s) Found: (Condition and Source)

A 2 1/2" O.D. BRASS CAP ON A 1 1/2" O.D. IRON PIPE PROTRUDING 1" ABOVE GROUND

COUNTY SURVEYORS OFFICE

T 30 S R 5 W

S 4 | S 3

N 1/16

1970

Accessories Found:

27" NOW 30" DIA 4 FT HIGH TIPPED OUT D. FIR STUMP WITH A FULLY HEALED DOUBLE BLAZE, REMAINS OF ROOT AND PART OF A BROKEN UP TRUNK BEAR N 83° E 8.2 FT (AGREES WITH RECORD PER SURVEY M 39-45)

10" NOW 12" DIA. MAPLE WITH A PARTIALLY HEALED DOUBLE BLAZE, ILLEGIBLE SCRIBE MARKS VISIBLE, BEARS N 22° W, 7.0 FT (AGREES WITH RECORD PER SURVEY M 39-45)

#3147

RENEWAL

Monument Set (Procedure and Description)

Monument Detail

NONE

N/A

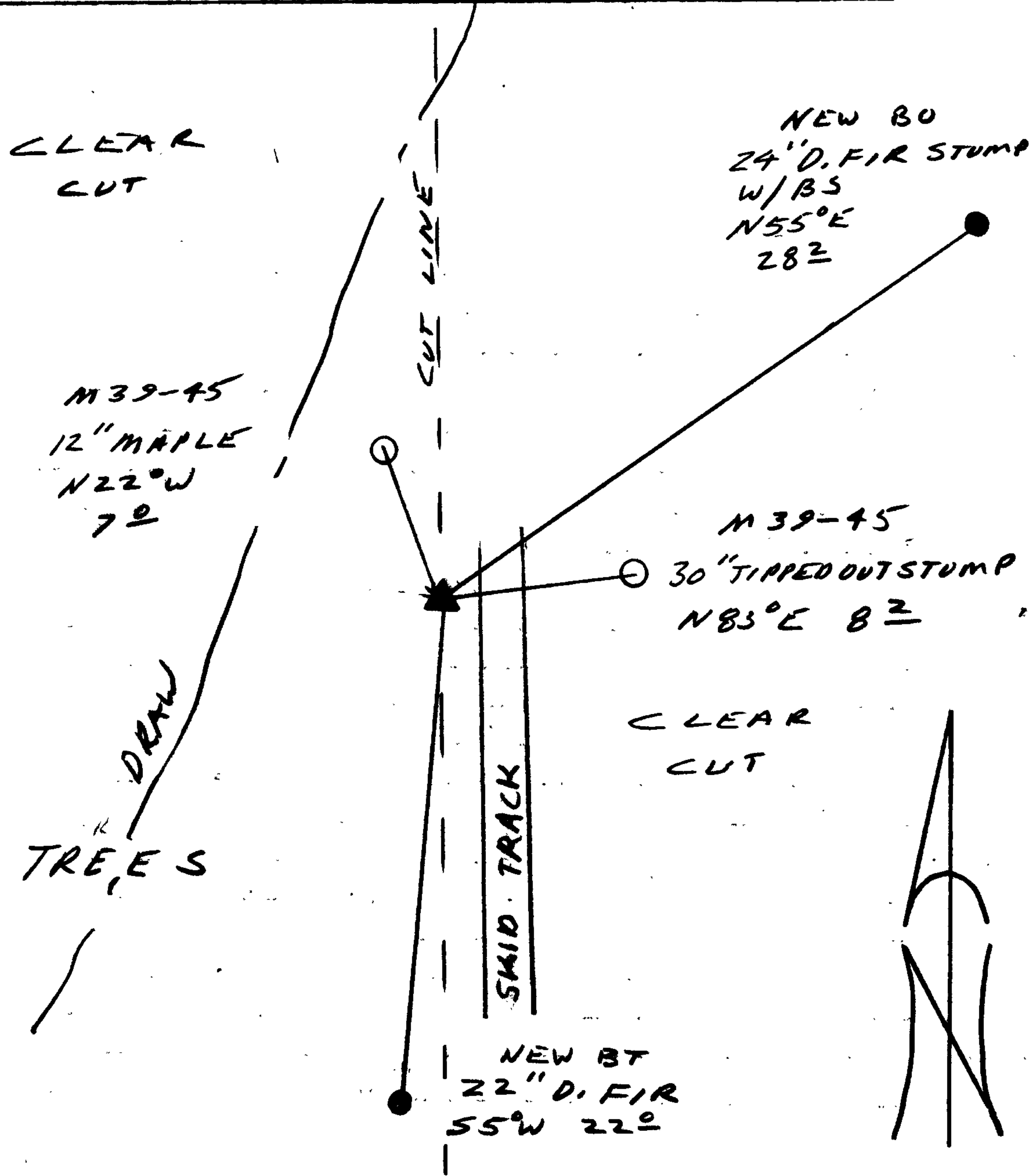
New Accessories

22" D. FIR DOUBLE BLAZED AND SCRIBED " N 1/16 S 4 CS BT"  
BEARS S5°W, 22.0 FT

24" DIA. 1 FT HIGH D. FIR STUMP, A 1/2" SQUARE BY 8 1/2" LONG IRON BOAT SPIKE WITH A 1/8" DIA. HEAD  
IS SET THROUGH CENTER INTO TOP OF STUMP, TOP OF BOAT SPIKE IS STAMPED  
"BO 1 1989", BOAT SPIKE BEARS N55°E, 28.2 FT.

Sketch of Monument, Accessories, and General Area

Location & Comments



Comp. Declin. 18° E  
 Agency DLSO  
 Party Chief RANDALL W SMITH  
 Notekeeper Randall W Smith  
 Witnesses STEPHEN J. FLOUSE

Address

**Surveyor's Seal**

REGISTERED  
 PROFESSIONAL  
 LAND SURVEYOR

*Larry E. Monrean*

OREGON  
 JULY 13, 1979  
 LARRY E. MONREAN  
 #1830