

GOVERNMENT CORNER RESTORATION FORM

FILED *JK*

Township 29S Range 5W Sec. 33 County DOUGLAS

State OR Date 9/22/89 No. _____

SEP 27 1989

Corner Designation

COUNTY SURVEYOR
DOUGLAS COUNTY, ORE.

533 | 534
54

- Condition Report Only
- Not Found
- Renewed
- Unrecorded
- Surveyed In
- Referenced Out

Previous Renewals #67 ^{T29-5} 1969 BLM D. RESURVEY

MONUMENT DETAIL

Monument(s) Found: (Condition and Source)

A 3 1/4" BLM BRASS CAP ON A 2 1/2"
O.D. IRON PIPE, PROTRUDING 9 IN
ABOVE GROUND. (FROM 1969 BLM D. RESURVEY)

U.S. DEPT. OF THE INTERIOR
T29S R5W

1" DIA. IRON PIPE FROM REN #67
NOT SEEN.

533 | 534
54

T30S R5W

1969

BUR. OF LAND MANAGEMENT

Accessories Found:

10" B. OAK NOW ROOT HOLE BEARS N45°E, 14.5 FT
(AGREES WITH REC.) ORIG. BT

10" B. OAK NOW ROOT HOLE BEARS S55°W, 6.0 FT
(AGREES WITH RENEWAL RECORDS) ORIG. BT

16" NOW 30" DIA. 4 FT HIGH D. FIR STUMP WITH A FULLY
HEALED SINGLE BLAZE, BEARS N11°E, 14.6 FT (REC. N11°E
14.0 (REN #67) AND 15.2 FT BLM D. RESURVEY) FROM REN #67

8" FIR NOW ROOT HOLE BEARS N53°W, 14.0 FT
(AGREES WITH REN #67, BLM 1969 REC. N53°E, 15.2 FT)
FROM REN #67

13" NOW 19" DIA 1 FT HIGH D. FIR STUMP WITH A FULLY
HEALED LOWER BLAZE, BEARS N71 1/2°W, 32.1 FT
(REC. N71 1/2°W, 34.0 FT, DISTANCE IS A SLOPE MEASUREMENT)
FROM 1969 BLM D. RESURVEY

#224 T29-5 X
#313 T30-5 X

RENEWAL

Monument Set (Procedure and Description)

Monument Detail

NONE

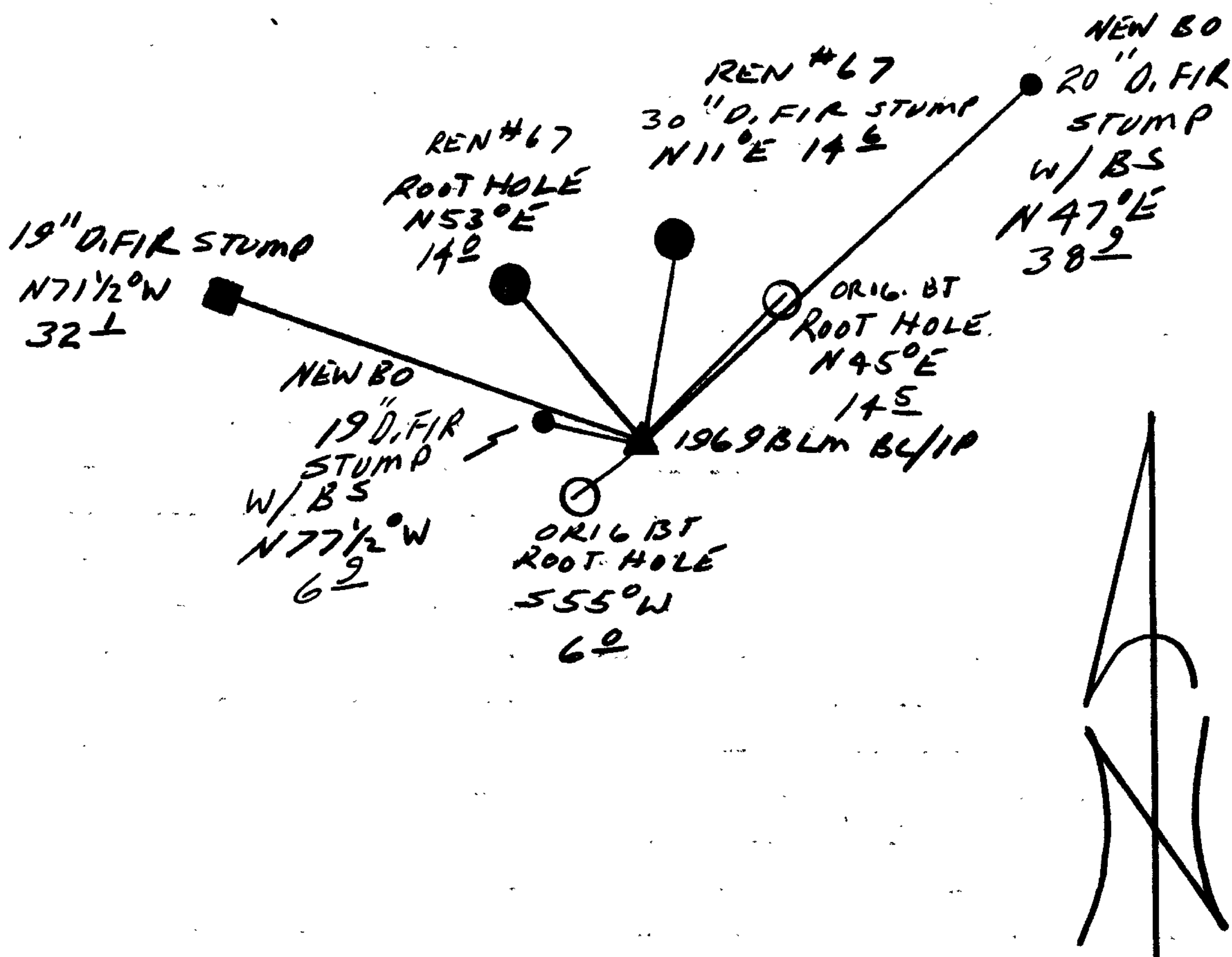
N/A

New Accessories

19" DIA 6 FT HIGH D. FIR STUMP, A 1/2" SQUARE BY 8 1/4" LONG IRON BOAT SPIKE WITH A 1/8" DIA HEAD IS SET THROUGH A BT TAG ON TOP OF STUMP, TOP OF BOAT SPIKE IS STAMPED "B02 1989" B.S. BEARS N77 1/2° W, 6.9 FT.

20" DIA 3 FT HIGH D. FIR STUMP, A 1/2" SQUARE BY 8 1/4" LONG IRON BOAT SPIKE WITH A 1/8" DIA. HEAD IS SET THROUGH A BT TAG ON TOP OF STUMP, TOP OF BOAT SPIKE IS STAMPED "B01 1989" B.S. BEARS N47° E, 38.9 FT.

Sketch of Monument, Accessories, and General Area



Location & Comments

CORNER LIES IN A RECENT BURN AND CLEAR CUT NO LIVE TREE'S CLOSE

Comp. Declin. 18° E
Agency DCSO
Party Chief RANDALL W SMITH
Notekeeper [Signature]
Witnesses STEPHEN J FLAUSE

Address

Surveyor's Seal
REGISTERED
PROFESSIONAL
LAND SURVEYOR

[Signature]

OREGON
JULY 13, 1979
LARRY E. MONREAN
#1830