

GOVERNMENT CORNER RESTORATION FORM

Township 28S Range 5W Sec. 6 County DOUGLAS SEP 27 1989

State OR Date 9/21/89 No. _____ COUNTY SURVEYOR DOUGLAS COUNTY, ORE.

Corner Designation

- Condition Report Only
- Not Found
- Renewed
- Unrecorded
- Surveyed In
- Referenced Out

S1 | S6

Previous Renewals #68 T28-5
#24, #84 T27-5 #138 T28-6

Monument(s) Found: (Condition and Source)

A 2 1/2" DIA. DCSO BRASS CAP ON A
1 1/2" O.D. IRON PIPE PROTRUDING
17 IN ABOVE GROUND, TOP OF
1. P/B. LEANS 7 IN. WEST OF PLUMB
POSITION. (FROM REN #84)

3/4" BOLT FOUND WITH TOP BENT
11 IN. SOUTH WEST OF PLUMB POSITION.
(FROM REN #24)

Accessories Found:

ORIG. 14" W. OAK BEARING S57 1/2° E 414.5 FT IS GONE.

ORIG. 12" NOW FALLEN, ROTTED OF INDETERMINABLE SIZE OAK
WITH AXE MARK, BEARS S85 1/4° W, 275.9 FT (AGREES WITH REC.)

18" NOW 23" DIA. W. OAK WITH A FULLY HEALED DOUBLE BLAZE
BEARS S58° E, 209.0 FT (REC. S58° E, 209.8 FT) FROM REN #84

14" NOW 22" DIA. W. OAK WITH A FULLY HEALED SINGLE BLAZE
BEARS S84 1/4° W, 151.8 FT (AGREES WITH REC. PER REN #84)
BT. SCRIBED IN REN #24 (NOTE: CALLED A B. OAK)

CROCKER'S 3/4" IRON BOLT BEARS S67 1/2° E, 76.0 FT (AGREES WITH REC.)
ERRONEOUSLY SET IN REN #24 AS SECTION CORNER (NOTE: FROM
CROCKER'S 3/4" IRON BOLT 18" NOW 24" DIA DOWN AND ROTTING OAK
WITH A POSSIBLE BLAZE BEARS S62 1/4° E 152.6 FT AGREES WITH
REN #24 THIS IS NOT A BEARING TREE TO CORNER POSITION
ESTABLISHED BY DCSO IN REN #84)

COUNTY SURVEYORS OFFICE

T 275
R 6 | S1 | S6 R 5
W | | W
T 285
1961

MONUMENT DETAIL

172 T27-5 X

#154 T28-5 X

#183 T28-6 X

C.S. File No. 64/1-6

RENEWAL

Monument Set (Procedure and Description)

DCSO BC/IP RETURNED TO PLUMB POSITION.

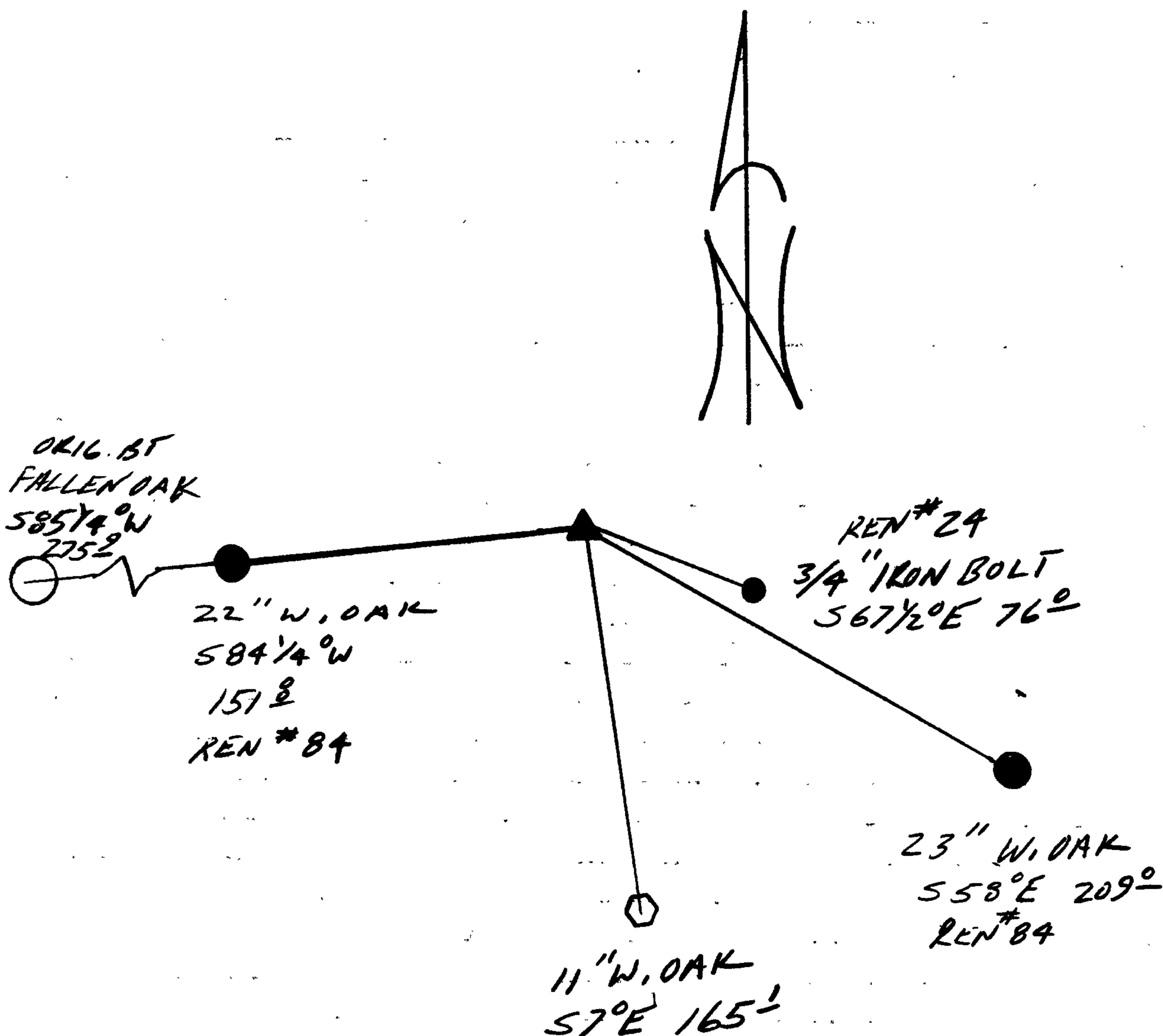
Monument Detail

N/A

New Accessories

11" W. OAK DOUBLE BLAZED AND SCRIBED "TZ85 R5W S6 CS BT" BEARS S7°E, 165.1 FT

Sketch of Monument, Accessories, and General Area



Location & Comments

Comp. Declin. 18°E
Agency DCSO
Party Chief RANDALL W SMITH
Notekeeper Randall W Smith
Witnesses STEPHEN J FLAUSE

Address

Surveyor's Seal

REGISTERED
PROFESSIONAL
LAND SURVEYOR

Larry E. Monrean

OREGON
JULY 13, 1979
LARRY E. MONREAN
#1830