

GOVERNMENT CORNER RESTORATION FORM

FILED

*JR*

Township 28S Range 3W Sec. 31 County DOUGLAS

SEP 27 1989

State OR Date 9/15/89 No. \_\_\_\_\_

COUNTY SURVEYOR  
DOUGLAS COUNTY, ORE

Corner Designation \_\_\_\_\_

536 | 531  
56

- \_\_\_\_\_ Condition Report Only
- \_\_\_\_\_ Not Found
- Renewed
- \_\_\_\_\_ Unrecorded
- \_\_\_\_\_ Surveyed In
- \_\_\_\_\_ Referenced Out

Previous Renewals 1964 AND 1980 BLM D. RESURVEY'S

MONUMENT DETAIL

Monument(s) Found: (Condition and Source)

A 3/4" BLM BRASS CAP ON A 3/2" DIA. IRON PIPE, PROTRUDING 7 IN ABOVE GROUND. (FROM 1964 BLM D. RESURVEY).

U.S. CADASTRAL SURVEY

T 28 S  
R 4 W | R 3 W  
536 | 531  
56

T 29 S R 3 W

1964

BUREAU OF LAND MANAGEMENT

Accessories Found: \_\_\_\_\_

ORIG. 34" DIA CEDAR NOW DEPRESSION WITH BURNT ROOTS BEARS N32°W, 25.7 FT (AGREES WITH 1964 BLM RECORD).

ORIG 24" DIA D. FIR BEARING N10°E, 130.7 FT IN 1964 BLM D. RESURVEY IS GONE.

42" NOW 49" DIA D. FIR WITH A FULLY HEALED SINGLE BLAZE BEARS N48°E, 56.1 FT (AGREES WITH RECORD) FROM 1964 BLM D. RESURVEY.

16" NOW 18" DIA. 7 FT TALL TIPPED D. FIR STUMP WITH ILLEGIBLE SCRIBE MARKS IN A PARTIALLY HEALED SINGLE BLAZE BEARS N50 3/4°W, 44.2 FT (AGREES WITH RECORD) FROM 1964 BLM D. RESURVEY.

8" NOW 12" DIA T. CEDAR WITH A PARTIALLY HEALED SINGLE BLAZE, BEARS N70°W, 15.8 FT (AGREES WITH RECORD) FROM 1980 BLM D. RESURVEY. NOTE: TREE NOT LIKELY TO LIVE LONG, RECENTLY GIRDLED WITH A CHAIN SAW.

T28-3 #1664  
T28-4 #133 ✓

RENEWAL

Monument Set (Procedure and Description)

Monument Detail

NONE

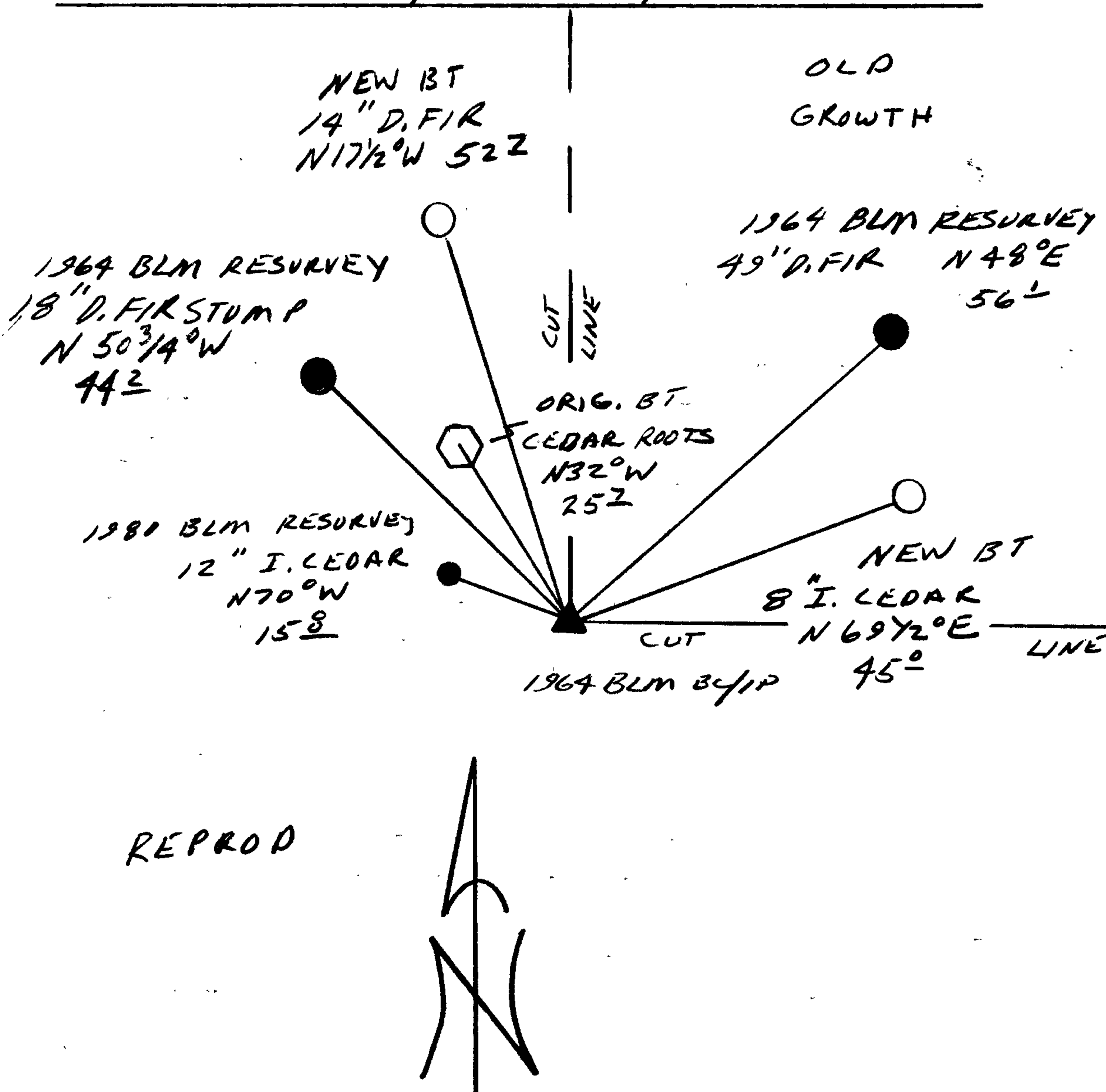
N/A

New Accessories

8" DIA. I. CEDAR DOUBLE BLAZED AND SCRIBED "T28SR3W S31 CS BT"  
BEARS N 69 1/2° E, 45.0 FT.

14" DIA. D. FIR DOUBLE BLAZED AND SCRIBED "T28SR4W S36 CS BT"  
BEARS N 17 1/2° W, 52.7 FT.

Sketch of Monument, Accessories, and General Area



Location & Comments

CORNER LIES AT THE  
INTERSECTION OF A NORTH  
AND EAST CUTTING LINES.  
OLD GROWTH IN NORTHEAST  
QUADRANT.

Comp. Declin. 18° E  
Agency DCSO  
Party Chief RANDALL W SMITH  
Notekeeper Randall W Smith  
Witnesses STEPHEN J FLAUSE

Address

Surveyor's Seal

REGISTERED  
PROFESSIONAL  
LAND SURVEYOR

*Larry E. Monrean*

OREGON  
JULY 13, 1979  
LARRY E. MONREAN  
#1830

REPROD