

GOVERNMENT CORNER RESTORATION FORM

FILED

*Handwritten initials*

Township 26S Range 4W Sec. 13 County DOUGLAS

SEP 11 1989

State OR Date 9/7/89 No. \_\_\_\_\_

Corner Designation \_\_\_\_\_

COUNTY SURVEYOR  
DOUGLAS COUNTY, ORE.

- Condition Report Only
- Not Found
- Renewed
- Unrecorded
- Surveyed In
- Referenced Out

INT L  
DLC 43

Previous Renewals #8, #104, #121

MONUMENT DETAIL

Monument(s) Found: (Condition and Source)

A 2 1/2" DIA BRASS CAP ON A 1 1/4"  
BY 36" LONG IRON PIPE, BENT LAYING  
ON TOP OF GROUND. FROM REN#121

DOUGLAS COUNTY SURVEYOR  
T 26S

INT L  
D.L.C. 43

R 4 W

1983

Accessories Found:

14" NOW 30" DIA 2 FT HIGH BROKEN AND ROTTED D.FIR STUMP,  
NO BLAZES OR SCRIBING SEEN, BEARS N 48 1/2° E 48.0 FT  
(AGREES WITH RECORD) FROM REN#8

36" NOW 36" DIA B.OAK WITH A FULLY HEALED DOUBLE BLAZE,  
BEARS N 1° W, 185.1 FT (REC. N 1° E, 185.1) FROM REN# 104

24" NOW 32" DIA W.OAK WITH A FULLY HEALED DOUBLE BLAZE,  
BEARS N 19° W, 179.8 FT (REC. N 18° W, 179.8 FT) FROM REN# 121

13" ASH NOW DEPRESSION WITH ROOTS, BEARS N 35° W, 141.7 FT  
(AGREES WITH REC.) FROM REN# 104

DCSO BC/IP STAMPED "T26S S14 S13 S23 S24 R4W 1981"  
PROTRUDES 6 IN ABOVE GROUND IN AN EAST-WEST FENCE LINE.  
BEARS S 82° W 537.8 FT (RECORD 5/8" I.R. WEST 541.0 FT IN  
REN# 104, SECTION CORNER BEARS WEST, 511.5 FT IN REN# 8,  
WEST 511 FT M 6-3)

#1244

RENEWAL

Monument Detail

Monument Set (Procedure and Description)

~~A BRASS CAP MONUMENT RESET~~ AT THE  
~~ALL CORNER IS RE-ESTABLISHED~~ INTERSECTION OF DISTANCES TO BEARING TREE'S  
 AND A RECORD BEARING TO REN#8 FIR  
 STUMP. 1983 DCSO BC/IP IS STRAIGHTENED  
 AND SET 10" BELOW GROUND, THE MARKS  
 "RESET 1989" ARE ADDED TO BRASS CAP.  
 HOLE DUG WHILE SETTING BC/IP SHOWED  
 REMANTS OF FLAGGING, PAINT AND RUST.  
 THIS MONUMENT SET TO PERPETUATE  
 POSITION PREVIOUSLY DETERMINED.

DOUGLAS COUNTY SURVEYOR

T265

RESET 1989

INT L

D.L.C. 43

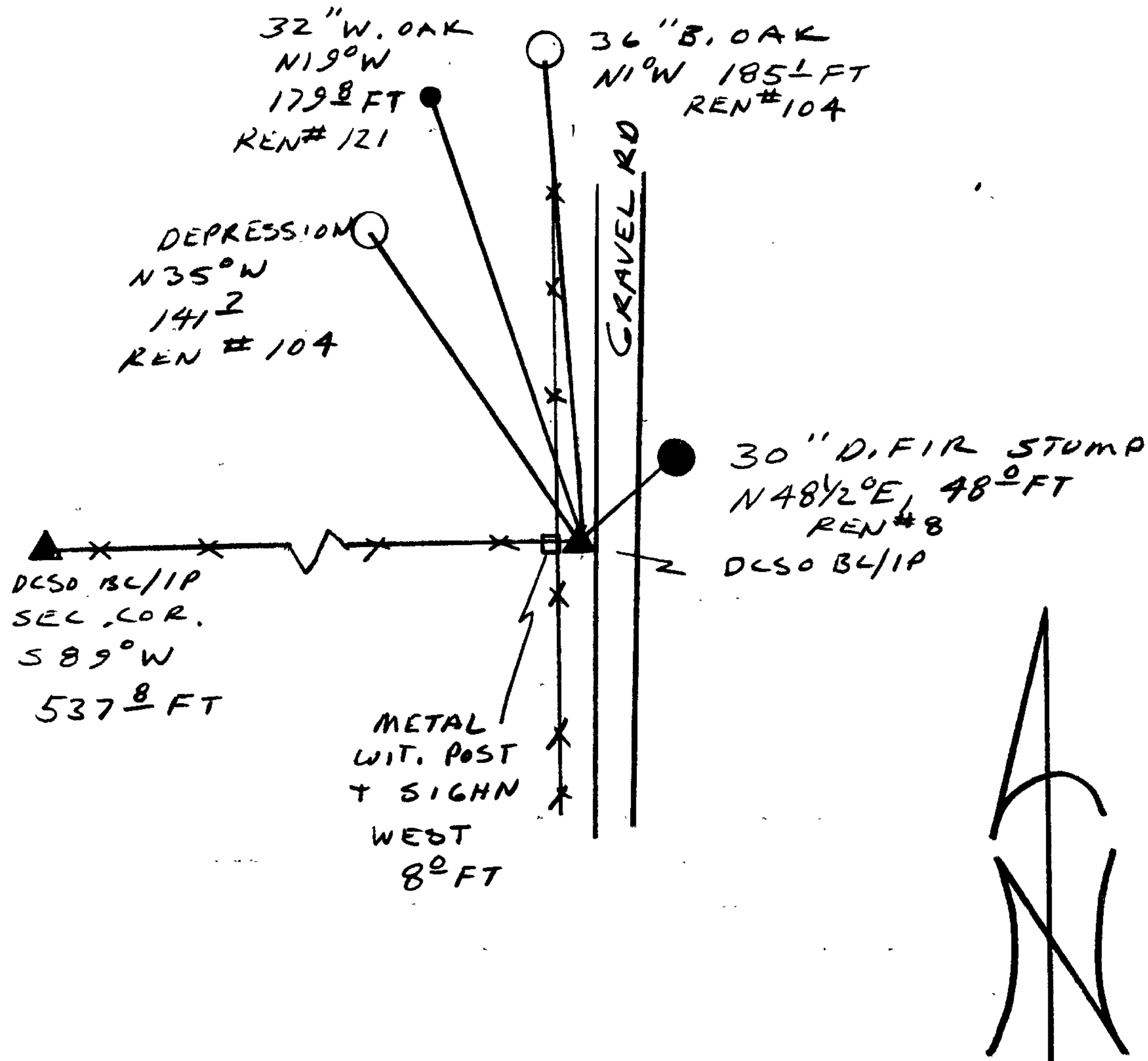
RAW

1983

New Accessories

NONE

Sketch of Monument, Accessories, and General Area



Location & Comments

CORNER LIES ALONG WEST  
EDGE OF GRAVEL ROAD.

Comp. Declin. 18° E

Agency DCSO

Party Chief RANDALL W SMITH

Notekeeper Randall W Smith

Witnesses STEPHEN J FLAUSE

Address

Surveyor's Seal

REGISTERED  
PROFESSIONAL  
LAND SURVEYOR

*Larry E. Monrean*

OREGON  
JULY 13, 1979  
LARRY E. MONREAN  
#1830