

GOVERNMENT CORNER RESTORATION FORM

FILED

Township 23S Range 7W Sec. 11 County DOUGLAS

JUL 11 1989

State OR Date 7/5/89 No. _____

Corner Designation

COUNTY SURVEYOR
DOUGLAS COUNTY, ORE.

S11 | S12
S14 | S13

- Condition Report Only
- Not Found
- Renewed
- Unrecorded
- Surveyed In
- Referenced Out

Previous Renewals #61A, #97, #108

MONUMENT DETAIL

Monument(s) Found: (Condition and Source)

A 2 1/2" DIA DISC BRASS CAP ON
A 1 3/8" O.D. BY 36" LONG IRON
PIPE MARK AS AT RIGHT, LEANING
NORTH. FROM REN #108

HAINES IRON ROD FROM REN #97
NOT FOUND

COUNTY SURVEYORS OFFICE

T 23 S

S11 | S12

S14 | S1E

R 7 W

1962

Accessories Found:

BEARINGS AND DISTANCES TAKEN TO PLUMB POSITION AT BASE OF BC/IP

ORIGINAL MAPLE BT SEEN IN REN #97 AND #108 IS ~~GONE~~ NOT FOUND.

BT'S FROM REN #108

20" NOW 32" DIA. W. FIR WITH A FULLY HEALED SINGLE BLAZE,
BEARS N 58° W, 44.2 FT. (AGREES WITH RECORD).

42" NOW 48" DIA. 60 FT HIGH BURNT AND DEAD CEDAR SNAG, WITH A
BURNT OUT DOUBLE BLAZE NO SCRIBING SEEN, BEARS S 58° W, 52.3 FT
(AGREE'S WITH RECORD).

18" NOW 24" DIA. 6 FT HIGH ROTTED MAPLE SNAG, WITH A 10" MAPLE
GROWING OUT OF EAST TRUNK, AXE MARKS AND ILLEGIBLE SCRIBING
SEEN, BEARS N 64 1/2° E, 125.4 FT (RECORD. N 66° E, 125.4 FT).

16" NOW 19" DIA. 60 FT HIGH DEAD CEDAR SNAG WITH A FULLY
HEALED UPPER BLAZE AND A PARTIALLY HEALED LOWER BLAZE,
ILLEGIBLE SCRIBING VISIBLE; BEARS S 72 1/2° E, 182.2 FT (AGREE'S
WITH RECORD).

#172 x

RENEWAL

Monument Set (Procedure and Description)

PLUMB POSITION AT BASE OF 1962 DCSO
 BC/IP IS REFERENCED. BC/IP IS
 SET BACK IN GROUND AND NOW
 PROTRUDES 7" ABOVE GROUND AND IS
 SURROUNDED BY A 2 1/2 FT DIA. MOUND
 OF SANDSTONE. THE MARKS "RESET 1989"
 ARE ADDED TO BRASS CAP.

Monument Detail

COUNTY SURVEYOR OFFICE

T235

S11	S12
S14	S1E

R7W

1962

RESET 1989

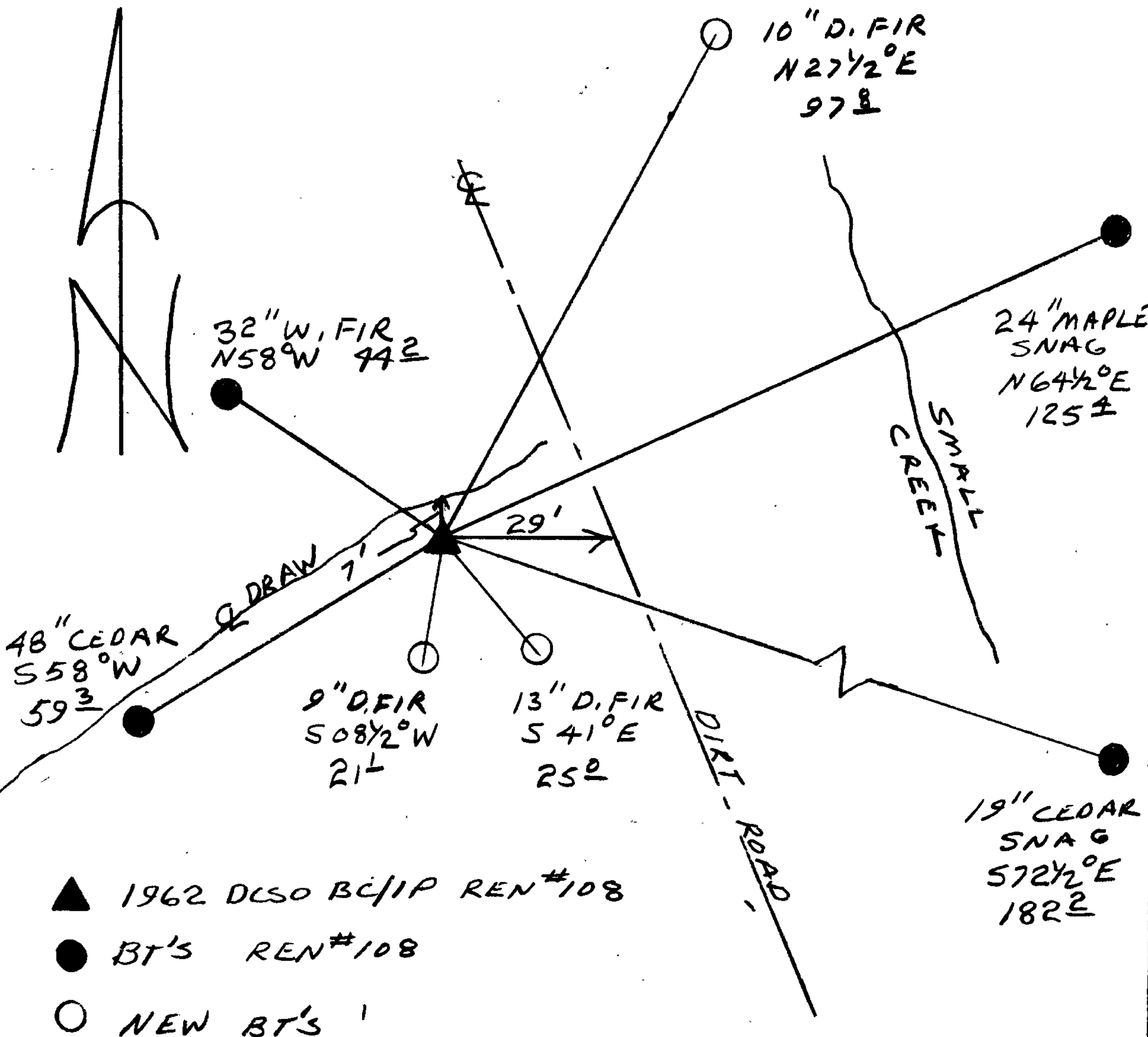
New Accessories

9" DIA. D. FIR DOUBLE BLAZED AND SCRIBED "T235 R7W S14-CS BT"
 BEARS S08 1/2° W 21.1 FT.

13" DIA. D. FIR DOUBLE BLAZED AND SCRIBED "T235 R7W S13 CS BT"
 BEARS S41° E, 25.0 FT.

10" DIA. D. FIR DOUBLE BLAZED AND SCRIBED "T235 R7W S12 CS BT"
 BEARS N27 1/2° E, 97.8 FT.

Sketch of Monument, Accessories, and General Area



- ▲ 1962 DCSO BC/IP REN #108
- BT'S REN #108
- NEW BT'S

Location & Comments

Comp. Declin. 18° E
 Agency DCSO
 Party Chief RANDALL W SMITH
 Notekeeper Randall W Smith
 Witnesses STEPHEN J. FLAUSE

Address

Surveyor's Seal

REGISTERED
 PROFESSIONAL
 LAND SURVEYOR

Larry E. Monrean

OREGON
 JULY 13, 1979
 LARRY E. MONREAN
 #1830