

GOVERNMENT CORNER RESTORATION FORM

FILED

Township 22S Range 8W Sec. 10 County DOUGLAS

*[Signature]*

JUL 11 1989

State OR Date 7/6/89 No. \_\_\_\_\_

COUNTY SURVEYOR  
DOUGLAS COUNTY, ORE.

Corner Designation

$\frac{1}{4}$   
S10 | S11

- Condition Report Only
- Not Found
- Renewed
- Unrecorded
- Surveyed In
- Referenced Out

Previous Renewals #8, #65, 1967 BLM D. RESURVEY

MONUMENT DETAIL

Monument(s) Found: (Condition and Source)

A 3 3/8" DIA. BLM BRASS CAP ON A  
 2 1/2" O.D. IRON PIPE PROTRUDING 7 IN.  
 ABOVE GROUND. MARKED AS AT RIGHT  
 (PER 1967 BLM D. RESURVEY) BRASS CAP  
 ORIENTATED EAST.  
 4" X 4" X 24" LONG STONE OUT OF  
 GROUND LEANING AGAINST FENCE  
 POST, BASE OF STONE BEARS N62°E,  
 1.1 FT FROM BLM BC/1P. STONE IS  
 MARKED ON THREE SIDES "1/4" ON ONE  
 SIDE "S10" ON ANOTHER SIDE, AND  
 "S11" ON A SIDE, "+" IS ON TOP.  
 (PER REN #8)

U.S. DEPT. OF THE INTERIOR

$\frac{1}{4}$

S10 | S11

T22S R8W

1967

BUR OF LAND MANAGEMENT

Accessories Found:

BEARINGS AND DISTANCES TAKEN FROM BLM BC/1P  
 36" NOW 36" DIA. ROTTED 6 FT HIGH FIR STUMP NO BLAZES  
 OR SCRIBING SEEN BEARS S54°E, 118.8 FT (REC S54°E,  
 116.8 FT) ORIG. BT

20" NOW 30" DIA D.FIR WITH A FULLY HEALED DOUBLE BLAZE  
 BEARS S107°E, 58.5 FT (DIST. AGREES WITH REN #65, DIST.  
 IN BLM RESURVEY A POSSIBLE FACE MEASUREMENT) RECORD BEARING  
 IS 57°E) PER REN #65

18" NOW 28" DIA. D.FIR WITH A FULLY HEALED DOUBLE BLAZE  
 BEARS S14°W 73.5 FT (DIST. AGREES WITH REN #65, DIST.  
 IN BLM RESURVEY A POSSIBLE FACE MEASUREMENT, RECORD BEARING  
 IS S18°W) PER REN #65

#1724

RENEWAL

Monument Set (Procedure and Description)

N/A

Monument Detail

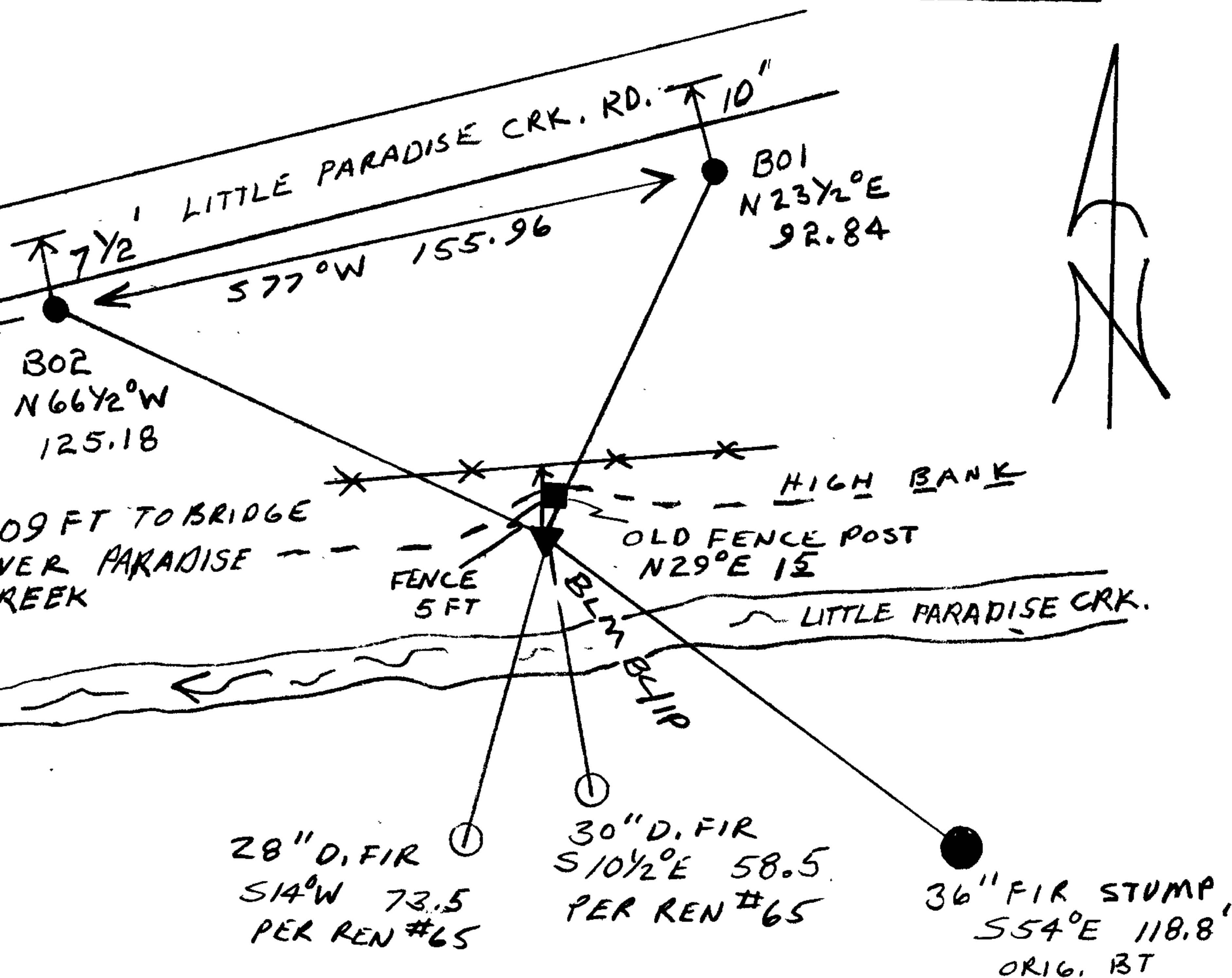
N/A

New Accessories

A 5/8" BY 32" LONG I.R. WITH A DC50 ALUMINUM CAP STAMPED "B01 1989" BEARS N23 1/2°E, 92.84 FT.

A 5/8" BY 32" LONG I.R. WITH A DC50 ALUMINUM CAP STAMPED "B02 1989" BEARS N66 1/2°W, 125.18 FT.

Sketch of Monument, Accessories, and General Area



Location & Comments

NOT ABLE TO RESET STONE FROM REN #8, DID NOT WANT TO DISTURB GROUND AROUND BCLIP, WHICH IS UNSTABLE AND ERODED.

Comp. Declin. 18°E  
 Agency DC50  
 Party Chief LARRY E. MONREAN  
 Notekeeper RANDALL W. SMITH  
 Witnesses STEPHEN J. FLAUSE

Address

Surveyor's Seal

REGISTERED PROFESSIONAL LAND SURVEYOR

Larry E. Monrean

OREGON  
 JULY 13, 1979  
 LARRY E. MONREAN  
 #1830