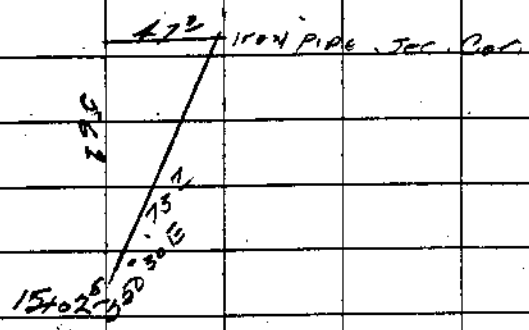




6				71.59'		
17°	95615	80°	76 <sup>5</sup>	11.74		
				8.35		
5°	99619	200°	199 <sup>2</sup>	18		
				10.34		
23°	92650	59°	54 <sup>3</sup>	1		
				10.89		
-	-	-	186°	11		
				10.75		
-	-	-	147 <sup>5</sup>	1		
				14.22		
52°	92718	87°	80 <sup>2</sup>	2		
				15.02		
35°	81915	90°	23 <sup>2</sup>			
				56 <sup>2</sup>		
				15.59 <sup>2</sup>		
				4.00		



154.58<sup>2</sup> Corrected to

Date 7-17-28 By PC  
 This survey consists of:  
 Map: \_\_\_\_\_  
 Narrative: \_\_\_\_\_  
 Corner Rpt: 63/164-78

DOUGLAS COUNTY  
 SURVEYOR