

CORNER RENEWAL MAP

SECTION 36, TOWNSHIP 22 SOUTH, RANGE 7 WEST, W.M.
DOUGLAS COUNTY, OREGON

REGISTERED
PROFESSIONAL
LAND SURVEYOR

Ken W. Hoffine
OREGON
JULY 18, 1987
KEN W. HOFFINE
2291

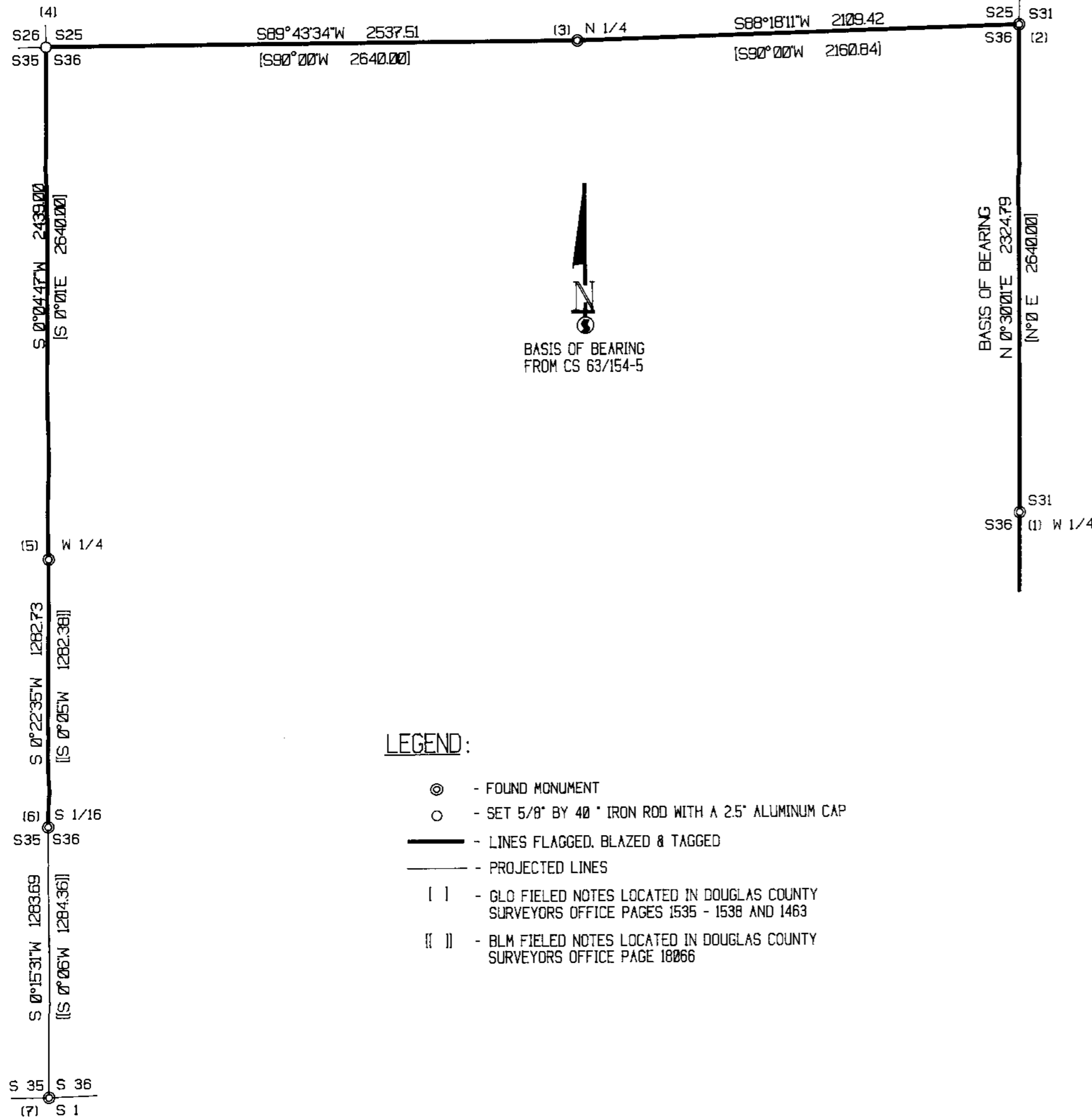
EXPIRES 6-30-95

FILED

Date: 6-2-95 By: JC
This survey consists of:
Map:
Narrative:
Corner Rpt: C.S. 63/161-27

DOUGLAS COUNTY
SURVEYOR

C.S. File No. 63/161-27



- LEGEND:**
- ⊙ - FOUND MONUMENT
 - - SET 5/8" BY 40" IRON ROD WITH A 2.5" ALUMINUM CAP
 - - LINES FLAGGED, BLAZED & TAGGED
 - - - - - PROJECTED LINES
 - | | - GLO FILED NOTES LOCATED IN DOUGLAS COUNTY SURVEYORS OFFICE PAGES 1535 - 1538 AND 1463
 - || - BLM FILED NOTES LOCATED IN DOUGLAS COUNTY SURVEYORS OFFICE PAGE 18066

NARRATIVE

THIS SURVEY WAS CONDUCTED TO ESTABLISH PROPERTY CORNERS AND PROPERTY LINES FOR TIMBER CUTTING PURPOSES. WE INITIATED THIS SURVEY AT THE NE CORNER OF SECTION 36 IN WHICH WE HAVE A PERMANENT BACKSITE TIE FOR THE BASIS OF BEARING TO OUR PREVIOUS SURVEY TO THE E 1/4 OF SECTION 36 (FILE CS 63/154-5). WE CONTINUED A RANDOM TRAVERSE WESTERLY TO THE N 1/4 CORNER OF SECTION 36, A COUNTY BRASS CAP SET FROM ORIGINAL EVIDENCE. WE TRAVERSED WESTERLY TO THE NW CORNER OF SECTION 36 FINDING EVIDENCE OF 3 ORIGINAL BEARING TREES. THESE BEARING TREES DID NOT MATCH WELL TO A SINGLE POINT FOR DISTANCE AND BEARING. WE USED THE FLAT DIRECT PULL TO THE 53' DOUGLAS FIR FOR S29°W 60.7 FEET TO THE OLD FACE AS THE STRONGEST EVIDENCE FOR TRUE LOCATION OF THE SECTION CORNER. THE 51' DOUGLAS FIR STUMP TO THE NORTHWEST WE USED AS THE WEAKEST EVIDENCE DUE TO ITS LOCATION VERY STEEP ABOVE THE SECTION CORNER. WE CONTINUED OUR TRAVERSE SOUTHERLY TO THE WEST 1/4 CORNER OF SECTION 36 A BLM BCIP SET FROM ORIGINAL EVIDENCE. THEN THE S 1/16 A BLM BCIP, AND THEN CLOSED THE TRAVERSE BACK AT THE SW CORNER OF SECTION 36 A BLM BCIP SET FROM ORIGINAL EVIDENCE. THIS CORNER WAS TIED IN FROM OUR SURVEY (FILE CS 63/154-5) WHICH WE CLOSED WITH AN ERROR OF CLOSURE OF 1 IN 13,000. WE THEN MARKED THE TRUE PROPERTY LINES AS SHOWN. THIS SURVEY WAS DONE WITH A LEITZ SET 2 TOTAL STATION WITH GARY ANGIOLET, JERRY RAGON AND PAT KELLY ASSISTING ME.

CORNER INFORMATION

- THE FOLLOWING IS A RECORD OF ALL CORNERS FOUND OR SET DURING THE COURSE OF THIS SURVEY.
- 1) WEST 1/4 CORNER SECTION 31 ONLY OF T. 22 S. R. 6 W.
FOUND HAINES T-IRON 0.4 FEET ABOVE GROUND IN GOOD CONDITION.
-- 39' DOUGLAS FIR BEARS N50°E, 13.7 FEET GROWN OVER SCAR AND HAINES B.T. TAG
-- 36' DOUGLAS FIR STUMP BEARS N70°W, 64.3 FEET (RECORD 53.5 FEET), SCRIBING AND AX MARKS VISIBLE IN GROWN OVER SCAR
-- 33' DOUGLAS FIR BEARS N21E, 27.6 FEET, HEALED FACE BLM TAG
CORNER SITS ON TOP OF A SMALL SPUR RIDGE SLOPING NORTHEAST AND APPROXIMATELY 2.5 CHAINS NORTH OF CREEK.
 - 2) CLOSING CORNER OF SECTIONS 25 AND 36
FOUND COUNTY BRASS CAP 1.0 FEET ABOVE GROUND IN GOOD CONDITION.
-- 32' WHITE FIR BEARS S37°W, 22.3 FEET, WELL HEALED SCAR AND B.T. TAG
-- 25' DOUGLAS FIR BEARS S30 1/2°E, 30.5 FEET, WELL HEALED SCAR AND B.T. TAG
-- 23' DOUGLAS FIR BEARS N25 1/2°W, 53.4 FEET (RECORD 52.0 FEET), WELL HEALED FACE AND B.T. TAG
-- FOUND ORIGINAL B.T. WITH BLM TAG NOW A BLOW DOWN N71°W, 93.0 FEET TO STUMP HOLE
CORNER SITS ON STEEP SOUTH FACING SLOPE.
 - 3) NORTH 1/4 OF SECTION 36
FOUND 3" COUNTY SURVEYOR'S CAP 1.0 FEET ABOVE GROUND.
-- 32' DOUGLAS FIR BEARS N56°24'E, 36.2 FEET, WELL HEALED FACE
-- 24' DOUGLAS FIR STUMP BEARS S41°04'W, 21.1 (RECORD S33°W, 21.5 FEET), WELL HEALED FACE
-- 48' DOUGLAS FIR STUMP BEARS S19°17'W, 40.6 FEET (RECORD S27°W, 40.9 FEET), WELL HEALED FACE WITH TAGS
CORNER IS APPROXIMATELY 15 FEET SOUTH OF DRAW A CLEARCUT LIES TO THE SOUTH.
 - 4) NORTHWEST SECTION CORNER OF SECTION 36
SET BY EXISTING B.T.'S A 2.5" ALUMINUM CAP WHICH READS LONE ROCK TIMBER T22S R7W SECTIONS 26, 25, 35, AND 36 1995 PLS 2291.
-- 34' CEDAR ROTTEN STUMP BEARS N41°E, 98.2 FEET (RECORD N45°E, 97.0)
-- 24' DOUGLAS FIR BEARS S54°E, 17.0 FEET, WE SCRIBED S36 B.T. AND TAGGED
-- 23' DOUGLAS FIR BEARS N70°30'E, 7.0 FEET, WE SCRIBED S25 B.T. AND TAGGED
-- 53' DOUGLAS FIR BEARS S29°W, 62.0 FEET (RECORD S29°W 60.7), WELL HEALED FACE AND BLM TAG
-- 51' DOUGLAS FIR STUMP BEARS N10°18'W, 54.4 FEET, (RECORD N12°W, 59.1) WE CHOPPED OUT OLD SCAR AND FOUND ORIGINAL SCRIBING
CORNER LIES ON VERY STEEP SOUTH EAST FACING SLOPE.
 - 5) WEST 1/4 OF SECTION 36
FOUND BLM ALUMINUM CAP 0.3 FEET ABOVE GROUND.
-- 42' WESTERN RED CEDAR STUMP BEARS S72°19'E, 25.5 FEET, NO MARKS HEAVY FIRE SCAR AND BLM TAGS
-- 20' HEMLOCK BEARS N58°46'W, 9.6 FEET, SCRIBING VISIBLE WITH BLM TAG
-- 34' WESTERN RED CEDAR SNAG BEARS N09°46'W, 43.1 FEET.
CORNER ON NORTHEAST SLOPE APPROXIMATELY 80 FEET NORTH OF RIDGE TOP.
 - 6) S 1/16 OF SECTION 36 AND 35
FOUND BLM 3" BRASS CAP 0.3 FEET ABOVE GROUND.
-- 33' DOUGLAS FIR STUMP BEARS N82°E, 40.9 FEET, SCRIBING VISIBLE WITH HAINES WASHER AND BLM TAG
-- 38' DOUGLAS FIR SB4°W, 37.0 FEET, SCRIBING VISIBLE HAINES WASHER AND BLM TAG
CORNER LIES ON VERY STEEP NORTH SLOPE APPROXIMATELY 80 FEET NORTH OF THE TOP OF THE PROMINENT SPUR RIDGE.
 - 7) CLOSING CORNER OF SECTION 35 AND 36
FOUND BLM BRASS CAP AT GROUND LEVEL.
-- 25' DOUGLAS FIR STUMP BEARS N22°W, 12.9 FEET (RECORD N18°W, 12.5 FEET), WELL HEALED SCAR, WE TAGGED STUMP AND PLACED A "PK" NAIL IN THE BASE
-- 16' DOUGLAS FIR STUMP BEARS N15°E, 16.2 FEET (RECORD N15°E, 16.5 FEET), WELL HEALED FACE, WE TAGGED STUMP
CORNER LIES IN A CLEARCUT ON A VERY STEEP NORTH SLOPE ON TOP OF A SMALL SPUR RIDGE 30 FEET WEST OF WHERE RIDGE SLOPES NORTHEAST.

LONE ROCK TIMBER CO.
P. O. BOX 1127 ROSEBURG, OREGON 503-873-0141

JUNIPER PROPERTIES TRACT J22-7-36

DATE	SCALE	DRAWN BY	SHEET
FEBRUARY 1995	1" = 500'	GARY ANGIOLET	

C.S. File No. 63/161-27