

Leonard E. Herzstein, L.S. 2150
Umpqua National Forest
P.O. Box 1008, Roseburg, OR 97470

ANDRAIEFF CADASTRAL, Project No. 93-2

REESTABLISHMENT of CORNER 18, H.E.S 179

located in Homestead Entry Survey No. 179

Sections 1 and 2, T. 29 S., R. 1 E., W.M.

Douglas County, Oregon

Surveyed at the Request of the Umpqua National Forest
from July, 1993 to October, 1994
(see the accompanying survey narrative)

FILED
Date: 2-14-95 By: JF
This survey consists of:
Map: C.S. 63/158-2
Narrative: C.S. 63/158-2
Corner Rpt: C.S. 63/158-1
DOUGLAS COUNTY, OR
SURVEYOR

1-31-95

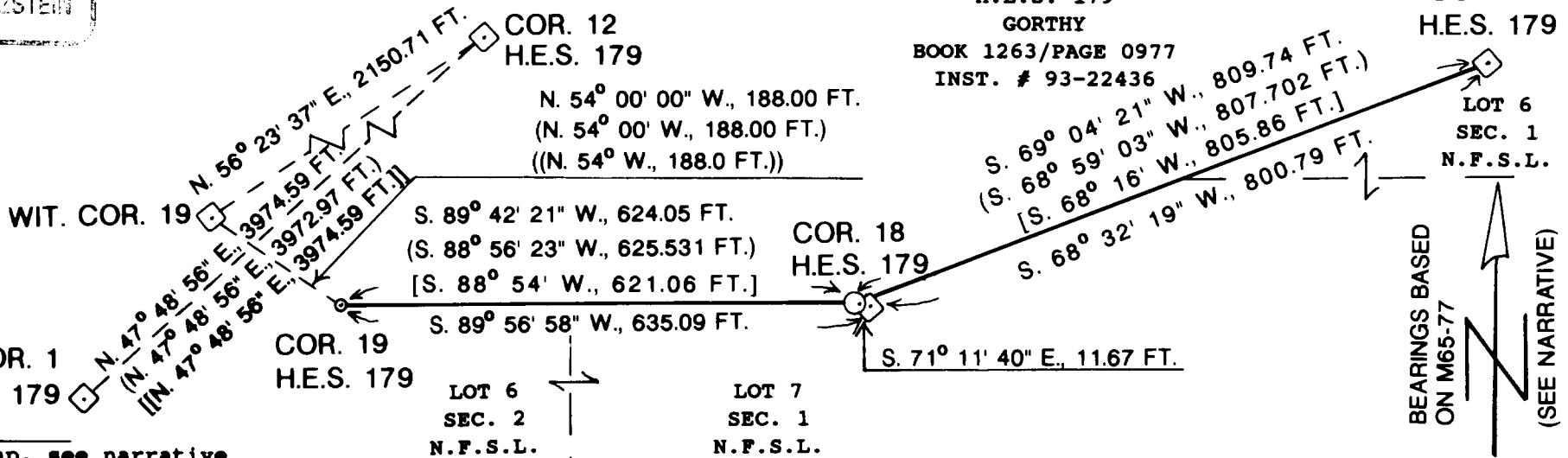
REGISTERED
PROFESSIONAL
LAND SURVEYOR

OREGON
JULY 26, 1905
LEONARD E. HERZSTEIN
2150

Certificate
expires 6/30/95



SCALE IN FEET



LEGEND

- ◊ found Brass Cap, see narrative
- set Brass Cap, see narrative
- corner point not set
- property line blazed and posted
- - - survey tie
- - - protracted section subdivision lines
- [[]] 1994 record per C.S. File No. 63/158-1, by L.S. 2150
- () 1978 record per survey M65-77, by L.S. 1017
- (()) 1975 record per C.S. File No. 57/17, by D.C.S.O.
- [] 1916 record per survey, H.E.S. 179

N.F.S.L. National Forest System Lands

U.S.D.A., FOREST SERVICE, REGION 6, UMPQUA NATIONAL FOREST
SUPERVISOR'S OFFICE, P.O. BOX 1008, ROSEBURG, OREGON 97470

Reviewed and accepted for the U.S.D.A., Forest Service. <i>Walter G. ...</i> 2-7-95 Forest Land Surveyor Date	I certify that this survey was performed at the request of the Umpqua National Forest Supervisor. <i>John J. Sloan</i> 2/13/95 Forest Engineer Date
--	---

DO NOT REMOVE FROM OFFICE
COUNTY SURVEYORS FILE DATA



SURVEY NARRATIVE FOR
ANDRAIEFF CADASTRAL, PROJECT NO. 93-2
REESTABLISHMENT OF CORNER 18, H.E.S. 179

LOCATION: This survey is located in Homestead Entry Survey No. 179 (H.E.S. 179), sections 1 and 2, Township 29 South, Range 1 East, Willamette Meridian, Douglas County, Oregon.

FOR: This survey was performed at the request of the U.S.D.A., Forest Service, Umpqua National Forest, 2900 NW Stewart Parkway (P. O. Box 1008), Roseburg, Oregon 97470.

DATES: This survey was performed from July, 1993, to October, 1994.

PURPOSE: The first purpose of this survey was to reestablish corner 18 of H.E.S. 179. Corner 18 was reestablished in 1978 by Gordon H. Long, L.S. 1017, on filed survey map (M65-77) and narrative (C.S. file 58/162), but that monument was found to have been set out of position.

The second purpose of this survey was to blaze and post the boundary between private ownership (H.E.S. 179) and National Forest System Lands from corner 17 to corner 18 to corner 19.

HISTORY OF PRIOR SURVEYS: The original Homestead Entry Survey No. 179 was performed in 1916 by Forest Service Surveyor, Frederick W. Rase. The bearings were determined by solar observation.

In 1921 G.L.O. surveyor, Fred Mensch, performed the subdivision of the portion of Township 29 South, Range 1 East, Willamette Meridian, in which H.E.S. 179 lies. He made ties to corners 1 and 6 of H.E.S. 179.

The Douglas County Surveyor's Office (D.C.S.O.) renewed 5 corners of H.E.S. 179 from original evidence. Corner 17 was reestablished on C.S. file no. 54/82 in 1969. A witness corner for corner 19 was established 50 feet away from the true corner based on original evidence at the true corner on C.S. file no. 54/82 in 1969. A second witness corner for corner 19, 188 feet away from the true corner, was established from evidence of the 1969 witness corner on C.S. file no. 57/17 in 1975.

In 1976 through 1978 Gordon H. Long, L.S. 1017, conducted a dependant resurvey of H.E.S. 179 for the Forest Service, in which he reestablished the remaining corners of H.E.S. 179 and established corners of a fee right-of-way (filed survey map M65-77 and survey narrative C.S. file no. 58/162). During this time, Gordon Long served as the Regional Land Surveyor for the Northwest Region of the Forest Service based in Portland, Oregon. Long provided professional direction and review of the work which was performed by field assistants working on the Umpqua National Forest in Roseburg, Oregon. Corner 1 was reestablished from original evidence and corners 12 and 18 were set by the Grant Boundary method of reestablishing lost corners. The bearings were based on the computed bearing between corners 11 and 15 as determined by calculations from the original Homestead Entry Survey.

In 1993 through 1994 I reestablished a destroyed right-of-way corner on the H.E.S. boundary for the Forest Service (map and survey narrative C.S. file no. 63/158-1).





PROCEDURE: For the retracement of the H.E.S. boundary, the basis of bearing was the computed bearing between corners 1 and 12 as determined by calculations from the survey map M65-77. Corner 17 and the 1975 witness corner for corner 19 were the controlling corners for the measurements to corner 18. A closed traverse between corners 1, 12, 17, 18 and the witness corner for corner 19 had an error of closure of 1 in 10,000. The equipment used were a T-2 1-second theodolite/RED 2L E.D.M. combination and a Set5 10-second total station.

Gordon Long's monument at corner 18 was found to be 12 feet out of position from the record of M65-77. This was considerably larger than an estimated 1 foot error circle expected of a transit and E.D.M. survey. Further investigation discovered that Long's proportioned position for corner 18 was not calculated by the Grant Boundary method for determining a lost corner position, as was stated in the survey narrative (C.S. file no. 58/162). Long's bearing and distances between corners 17, 18 and 19 were determined by an incorrect procedure.

There was no field evidence or survey records to indicate Long's corner 18 monument has been utilized. In discussions with the current adjoining property owners, Jack Gorthy and sons, Steve and Dick Gorthy, their family has not used Long's monument.

Because of these errors, I do not accept Long's position for corner 18. I determine the proper procedure to reestablish corner 18 is to recompute a proportioned position for corner 18 using the Grant Boundary method between the controlling corners based on my survey. This places my corner 18, N. 71° 11' 40" W., 11.67, feet from Long's monument.

The field books "Andraieff Cadastral Survey" are in project folder 93-2 at the Umpqua National Forest Supervisor's Office, as are Long's field book and computations for M65-77 and C.S. file no. 58/162.

Bearing tree measurements were to the center of the rootcrown. The tree diameters were taken at breast height. The bearings were rounded to the nearest 10 or 15 minutes computed from the control traverse.

The magnetic declination was found to vary between 14-1/4° and 29° East as determined at certain corners by backsighting on a control point of a known bearing. The wide variation was mainly due to steel fence posts set near some of the corners. The magnetic declination at corner 18 was 24-3/4° East.

CORNER MONUMENTS FOUND:

Corner 1, H.E.S. 179: Found corner as described on C.S. file no. 63/158-1.
Corner 1 is
identical to U. S. Location Monument No. 179.

Corner 12, H.E.S. 179: Found corner as described on C.S. file no. 63/158-1.





Corner 17, H.E.S. 179: Found a 1-1/4" outside diameter iron post, firmly set, projecting 6" above the ground, with a 2-1/2" diameter brass cap attached and marked as shown on M65-77.

From which the remaining original bearing tree:

A 22" red cedar bears S. 82° E., 23.1 feet, with a healed single blaze.

And bearing trees marked by D.C.S.O. in 1969 on C.S. file no. 54/82:

A 16" hemlock bears S. 31° E., 43.7 feet (rec. 44.2 feet), with scribe marks visible on a partially healed double blaze.

A 14" white fir bears N. 8° W., 52.8 feet (rec. 53.3 feet), with a healed double blaze.

And a guard post per C.S. file no. 58/162 by Long in 1978:

A steel fence post, firmly set, projecting 4 feet above the ground, bears N. 30° W., 2.0 feet, with Forest Service signs nos. 54-2 and 54-4 attached.

Corner 18, H.E.S. 179: Found a 1-1/4" outside diameter iron post, firmly set, flush with a 3 foot diameter mound of stone, with a 2-1/2" diameter brass cap attached and marked as shown on M65-77. This monument is 11.67 feet out of position. See the new monument I set.

From which bearing trees marked by Long on M65-77 in 1978:

An 18" alder bears N. 74° 30' E., 119.2 feet (rec. 118.5 feet), with scribe marks "HES 179" visible on a partially healed double blaze.

This tree is leaning heavily to the West. The bearing and distance are to a 60 penny spike I drove over the center of the rootcrown.

A 10" maple bears S. 44° E., 62.2 feet (rec. 63.1 feet), with scribe marks "18" "B" visible on a partially healed double blaze.

Witness Corner for Corner 19, H.E.S. 179: Found 1" iron post, firmly set, projecting 2" above the ground, with a 2-1/2" brass cap attached and marked as shown on C.S. file no. 57/17 by D.C.S.O. in 1975.

From which bearing trees marked by the D.C.S.O. in 1975:

A 32" Douglas fir bears N. 56° 50' E., 98.2 feet, (rec. N. 59° E.) with a healed double blaze.

A 30" incense cedar bears S. 14° 45' W., 91.2 feet, (rec. S. 17-1/2° W.) with a healed double blaze.

A 40" red cedar bears N. 5° 50' W., 89.5 feet, (rec. N. 3-1/2° W., 89.9 ft.) with scribe marks "HES 179" "CS BT" visible on a partially healed double blaze.

A steel angle iron, firmly set, projecting 4 feet above the ground, bears S. 27° E., 1.0 feet, with D.C.S.O. sign "Survey Marker" and Forest Service sign no. 54-4 attached.

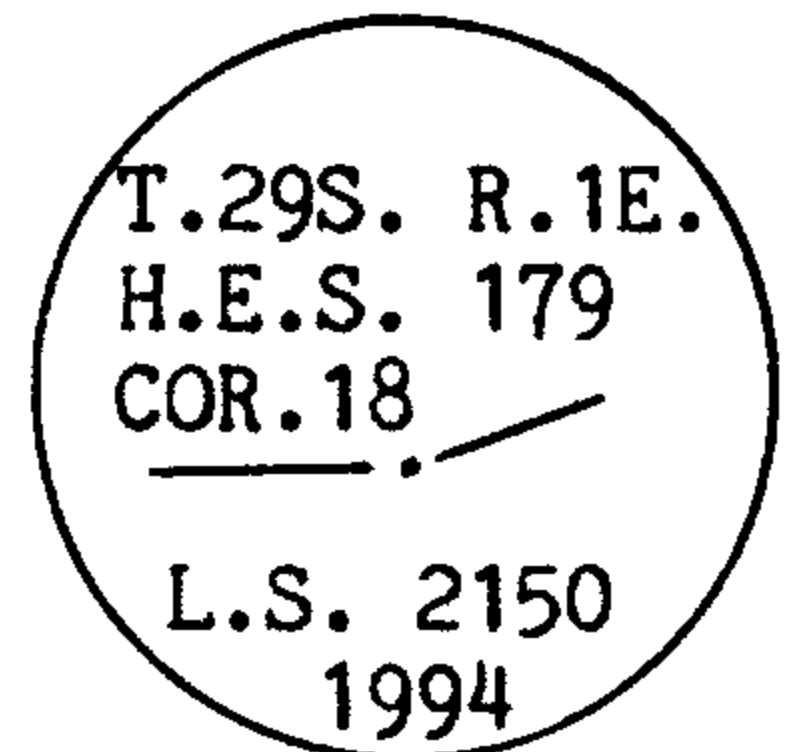
The magnetic declination was found to be 29° East.



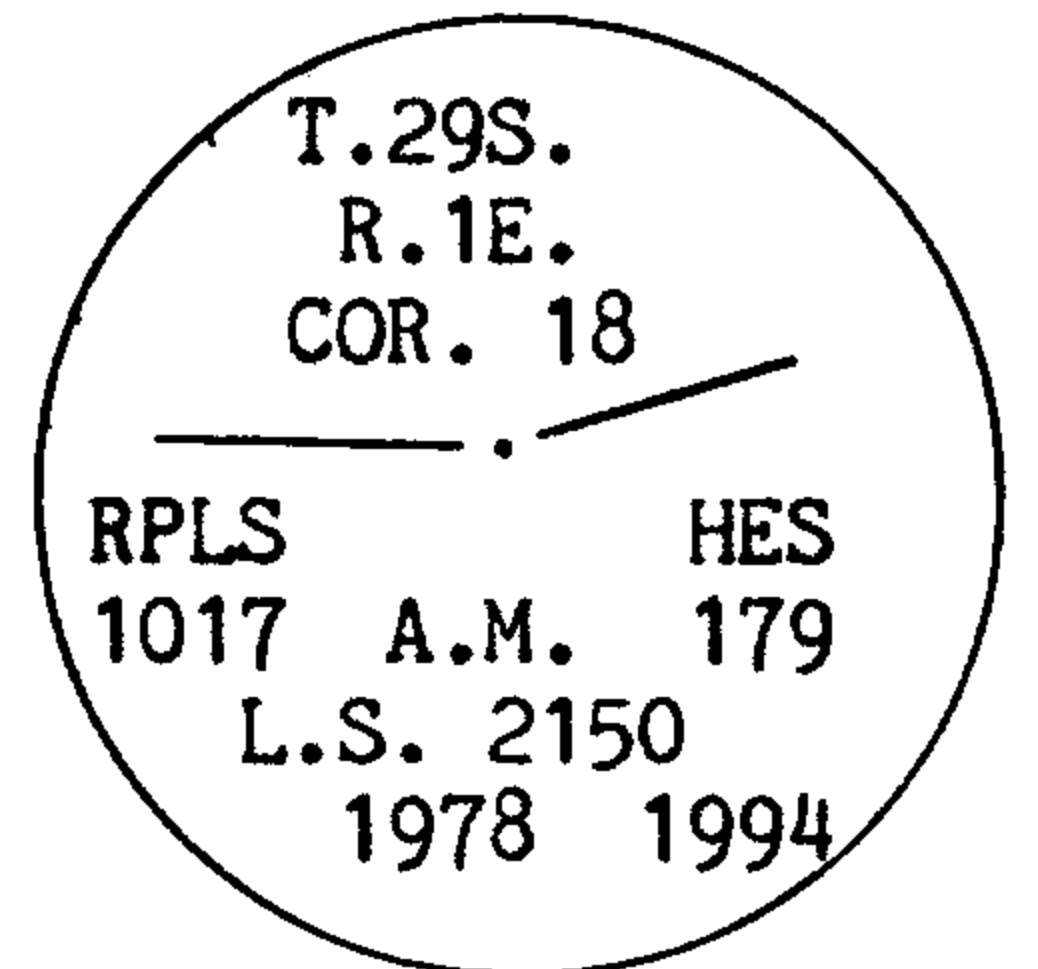


CORNER MONUMENT SET:

Corner 18 of H.E.S. 179: At the true corner position, determined by the Grant Boundary method of reestablishing lost corners, I set a 2-1/2" diameter iron post, 30" long, set 24" in the ground, with a 3 foot diameter mound of stone raised flush with the top, with a 2-1/2" diameter brass cap attached and stamped as shown.



From which the monument set by Long on M65-77 in 1978: A 2-1/2" diameter iron post, 30" long, with a 2-1/2" brass cap attached bears S. 71° 11' 40" E., 11.67 feet. I add marks "A.M." "L.S. 2150" "1994" to the brass cap as shown and reset the monument 6" below the ground.



And the bearing trees marked by Long on M65-77 in 1978: An 18" alder bears N. 76° 30' E., 128.9 feet, with scribe marks "HES 179" visible on a partially healed blaze. This tree is leaning heavily to the West. The bearing and distance are to a 60 penny spike I drove over the center of the rootcrown.

A 10" maple bears S. 48° 45' E., 72.9 feet, with scribe marks "18" "B" visible on a partially healed double blaze.

And a guard post I set:

A 6 foot long aluminum post, set 2 feet in the ground, bears West., 3.0 feet, with Forest Service signs nos. 54-2 and 54-9 attached.

The magnetic declination was found to be 24-3/4° East.

The corner is on a rocky flat 14 feet East above the bank of a secondary channel of the South Umpqua River.

Leonard E. Herzstein
Oregon L. S. No. 2150
Umpqua National Forest
P.O. Box 1008
Roseburg, OR 97470

(SEAL)

1-31-95



Certificate expires 6/30/95

FILED

Date: 2/14/95 By: JP
This survey consists of:
Map: C.S. 63/158-2
Narrative: C.S. 63/158-2
Corner Rpt: C.S. 63/158-1

DOUGLAS COUNTY
SURVEYOR



Caring for the Land and Serving People