

LONE ROCK TIMBER CO.

PO BOX 1127 ROSEBURG, OREGON 97470 JUNIPER PROPERTIES TRACTS
SECTION 36, TOWNSHIP 22 SOUTH, RANGE 7 WEST, W.A. DOUGLAS COUNTY, OREGON
SECTION 30, TOWNSHIP 22 SOUTH, RANGE 6 WEST, W.A.
BRUSHY-THISTLEBURN SURVEY SCALE 1" = 400' DATE: FEB 1994

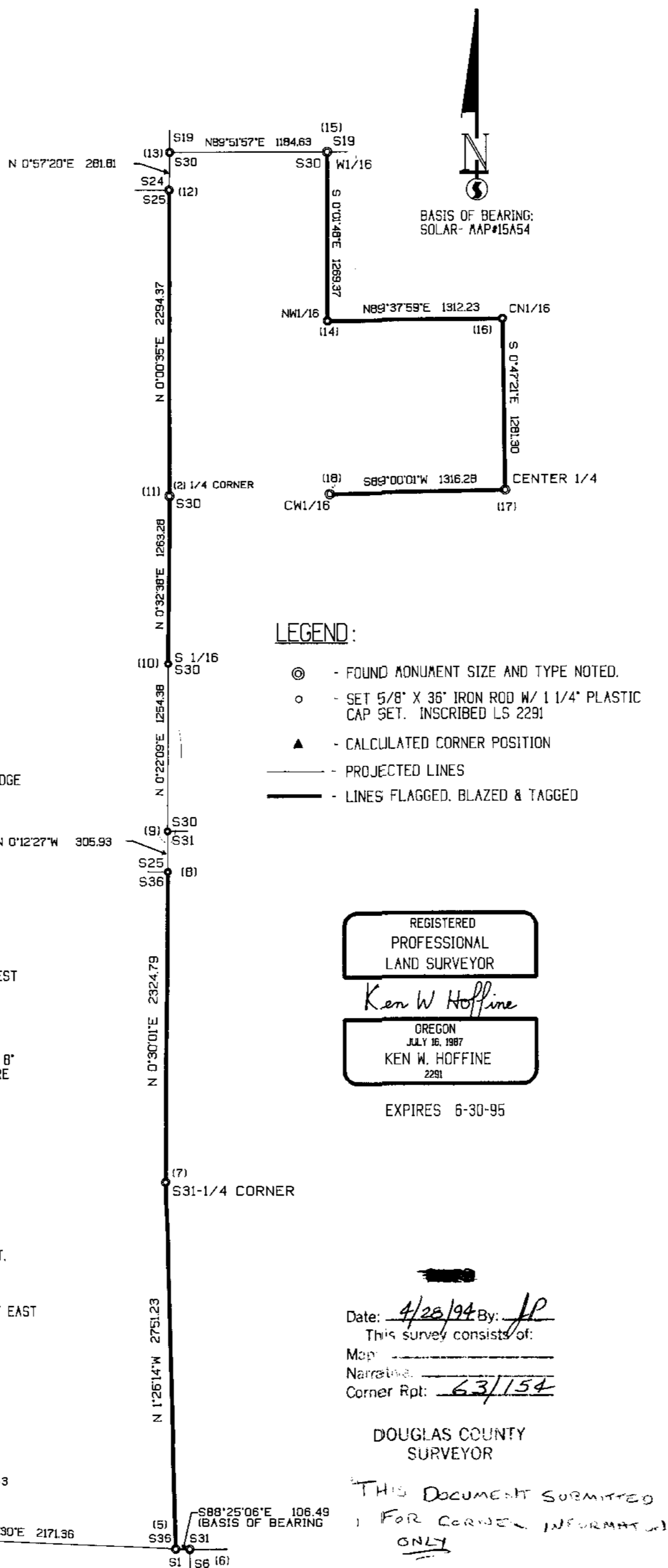
NARRATIVE

THIS SURVEY WAS CONDUCTED TO ESTABLISH CONTROL OF FOUND MONUMENTS FROM VARIOUS BLM AND WILFORD HAINES SURVEYS AND TO MARK LINES BETWEEN FOUND MONUMENTS FOR TIMBER CUTTING PURPOSES. WE INITIATED THE SURVEY AT THE SW CORNER OF SECTION 36, T22S, R7W, A BLM BCIP FROM TWO ORIGINAL BEARING TREES FOUND BY WILFORD HAINES. WE TRAVERSED EAST TO THE W 1/16 AND N 1/4 OF SECTION 1, T23S, R7W MONUMENTED BY HAINES T-BARS FROM PROPORTION. TO THE S 1/4 OF SECTION 36 MONUMENTED BY BLM BCIP FROM ORIGINAL BEARING TREES. WE CONTINUED OUR TRAVERSE TO THE SE CORNER OF SECTION 36 AND THE NORTHEAST CORNER OF SECTION 1, BLM BCIP'S WHICH I USE AS A BASIS OF BEARING FROM MY PREVIOUS MAP #111-72. WE CONTINUE OUR TRAVERSE NORTH FINDING A PREVIOUSLY UNRECORDED HAINES T-BAR SET FOR THE E 1/4 OF SECTION 36 FROM ORIGINAL EVIDENCE STILL EVIDENT. WE THEN TRAVERSE NORTH TO BLM BCIP'S SET FOR THE NE CORNER OF SECTION 36, T22S, R7W AND THE NW CORNER OF SECTION 31, T22S, R6W, BOTH FROM ORIGINAL EVIDENCE. SECTION 30, T22S, R6W WAS SURVEYED BY HAINES IN 1955 MAP #2-13 IN WHICH HE SUBDIVIDED AND SET 1/16 CORNERS. COUNTY SURVEYORS IN 1990 FOUND FROM ORIGINAL EVIDENCE THE WEST 1/4 (HAINES PROPORTIONED) AND A DIFFERENT LOCATION FOR THE NORTHWEST CORNER OF SECTION 30 FROM HAINES LOCATION INT'4'40"E 47.9 FEET). EVIDENTLY HAINES RESET WITH T-BAR'S THE 1/16 CORNERS AND THE CENTER 1/4 CORNER OF SECTION 30, BUT DID NOT RECORD. ONLY ONE MENTION OF RESETTING A CORNER IN HAINES NOTES COULD BE FOUND; THE WEST 1/16 BETWEEN SECTIONS 19 AND 30 IN HAINES BOOK #109 COUNTY SURVEYORS RECORD. WE TRAVERSED TO EACH MONUMENT SHOWN ON THIS MAP FINDING HAINES MONUMENTS HE RESET CORRECTLY FOR SUBDIVISION AND EVIDENCE OF THE CORNER HE SET FOR RECORD ON MAP #2-13. TRUE PROPERTY BOUNDARY LINES WERE BLAZED AND FLAGGED AS SHOWN ON THIS MAP. THIS SURVEY WAS DONE WITH A LIETZ SET 2 TOTAL STATION WITH GARY ANGIOLET, PAT KELLY AND JERRY RAGON ASSISTING ME.

CORNER INFORMATION

THE FOLLOWING IS A RECORD OF ALL CORNERS FOUND DURING THE COURSE OF THIS SURVEY.

- (1) THE CLOSING CORNER FOR SECTION 35 AND SECTION 36
FOUND BLM BRASS CAP AT GROUND LEVEL IN GOOD CONDITION.
-- 25" DOUGLAS FIR STUMP BEARS N22°W, 12.9 FEET (RECORD N18°W, 12.9 FEET) WELL HEALED SCAR, WE TAG STUMP AND PUT PK NAIL IN BASE
-- 16" DOUGLAS FIR STUMP BEARS N15°E, 16.2 FEET (RECORD N15°E, 16.5 FEET) GOOD SCAR ON ROTTEN CENTER STUMP, WE TAG STUMP AND PAINT BT
CORNER SITS OUT IN CLEARCUT ON VERY STEEP NORTH SLOPE ON TOP OF SMALL SPUR RIDGE 1/2 CHAIN WEST OF WHERE RIDGE SLOPES NORTHEAST.
- (2) WEST 1/16 CORNER SECTION 1 ONLY
FOUND HAINES T-IRON IN GOOD CONDITION.
-- 46" DOUGLAS FIR BEARS N50°E, 19.0 FEET (RECORD N51°E, 20.0 FEET) BARK SCRIBING VISIBLE, BLM TAG
-- 48" DOUGLAS FIR STUMP BEARS S20°W, 28.9 FEET (RECORD S21°W, 29.0 FEET) SCRIBING VISIBLE ON FALLING DOWN BARK, WE PAINT AND TAG STUMP
CORNER SITS ON VERY STEEP SOUTHEAST FACING SLOPE APPROXIMATELY 1 CHAIN EAST OF DRAW. CLEARCUT TO SOUTH.
- (3) NORTH 1/4 CORNER SECTION 1, T23S, R7W ONLY
FOUND HAINES T-IRON 15 FEET ABOVE GROUND.
-- 30" DOUGLAS FIR STUMP BEARS S2°E, 69.5 FEET, NO MARKS (RECORD S1°E, 70.5 FEET)
-- 10" DOUGLAS FIR BEARS S21°E, 14.3 FEET, I SCRIBE BT AND TAG TREE
GROUND ON STEEP SOUTH SLOPE APPROXIMATELY 40 FEET NORTH OF SHALLOW BOWL LIKE HEAD OF DRAW. CLEARCUT TO WEST OF CORNER.
- (4) SOUTH 1/4 CORNER SECTION 36, T22S, R7W ONLY
FOUND BLM BRASS CAP 0.4 FEET ABOVE GROUND.
-- 27" DOUGLAS FIR BEARS N40°E, 30.7 FEET (RECORD N41°E, 31.0 FT), WELL HEALED SCAR AND BLM TAG
-- 30" DOUGLAS FIR STUMP BEARS S84°W (RECORD N84°W), 23.5 FEET PART OF OLD FACE AND MARKS VISIBLE, PITCH RING AT B'
CORNER LIES ON STEEP SOUTHEAST APPROXIMATELY 30 FEET EAST OF DIRT ROAD. CLEARCUT TO THE SOUTH, SMALL 2 ACRE PATCH OF TIMBER TO THE NORTH.
- (5) SOUTHEAST CORNER OF SECTION 36
FOUND 1956 BLM 2 1/2" BRASS CAP APPROXIMATELY 1.0 FEET ABOVE GROUND WITH A HAINES T-IRON WHICH BEARS S3°43'E, 13.79 FEET.
-- 38" DOUGLAS FIR STUMP BEARS N16°W, 23.5 FEET, THIS IS A HIGH STUMP COVERED WITH ALUM COVERING, SCRIBE VISIBLE, LRT TAG
-- 42" DOUGLAS FIR BEARS N39°W, 49.5 FEET, WELL HEALED SCAR AND BLM TAG
-- 18" DOUGLAS FIR BEARS N38 1/2°E, 60.0 FEET, WELL HEALED SCAR AND BT TAG
CORNER LIES APPROXIMATELY 100 FEET EAST OF BRUSH CREEK ROAD ON A 40% WEST SLOPE.
- (6) NORTHWEST CORNER OF T23S, R6W, SECTION 6
FOUND 1956 BLM BRASS CAP APPROXIMATELY 1.0 FEET ABOVE GROUND WITH A HAINES T-IRON WHICH BEARS S39°E, 13.32 FEET.
-- 29" DOUGLAS FIR BEARS S25°W, 63.8 FEET, WELL HEALED SCAR AND BLM TAG
-- 32" DOUGLAS FIR BEARS S65°W, 61.1 FEET, WELL HEALED SCAR AND HAINES WASHER ON TREE, LRT LOCATION TAG
-- 50" DOUGLAS FIR BEARS N86°E, 54.5 FEET, WELL HEALED SCAR AND HAINES BRASS WASHER, LRT LOCATION TAG
CORNER LIES ON A 40% WEST SLOPE APPROXIMATELY 105 FEET EAST OF THE SOUTHWEST CORNER SECTION 31 AND 205 FEET EAST OF BRUSH CREEK ROAD.



- (7) WEST 1/4 CORNER SECTION 31, T22S, R6W
FOUND HAINES T-IRON 0.4 FEET ABOVE GROUND IN GOOD CONDITION.
-- 36" DOUGLAS FIR STUMP BEARS N70°W, 64.3 FEET (RECORD 53.5 FEET) SCRIBING AND AXE MARK VISIBLE IN GROWN OVER SCAR
-- 32" DOUGLAS FIR BEARS N50°E, 13.7 FEET, GROWN OVER SCAR AND HAINES BT TAG
-- 33" DOUGLAS FIR BEARS N21°E, 27.6 FEET, HEALED FACE BLM TAG
CORNER SITS ON TOP OF SMALL SPUR RIDGE SLOPING NORTHEAST AND APPROXIMATELY 2.5 CHAINS NORTH OF CREEK.
- (8) NORTHEAST CORNER SECTION 36, T22S, R7W
FOUND COUNTY BRASS CAP 1.0 FEET ABOVE GROUND IN GOOD CONDITION.
-- 32" WHITE FIR BEARS S37°W, 22.3 FEET, WELL HEALED SCAR AND BT TAG
-- 25" DOUGLAS FIR BEARS S30 1/2°E, 38.5 FEET, WELL HEALED SCAR AND BT TAG
-- 23" DOUGLAS FIR BEARS N25 1/2°W, 53.4 FEET (RECORD 52.8 FEET), WELL HEALED FACE AND BT TAG
-- FOUND ORIGINAL 31" BT WITH BLM TAG, NOW A BLOW DOWN, N71°W, 93 FEET TO STUMP HOLE.
CORNER SITS ON STEEP SOUTH FACING SLOPE.
- (9) CLOSING CORNER FOR SECTIONS 30 AND 31, T22S, R6W
FOUND COUNTY BRASS CAP 0.7 FEET ABOVE GROUND IN GOOD CONDITION.
-- 36" (ORIGINAL) CEDAR STUMP BEARS N83°E, 155.7 FEET VERY DECAYED
-- 48" (ORIGINAL) FIR STUMP REMAINS BEARS S28°E, 96.1 FEET, NO MARKS OR TAGS
-- 20" DOUGLAS FIR BEARS S28°E, 89.6 FEET DOUBLE BLAZED AND BT TAG
-- ORIGINAL SNAG BEARS S29°E, 96.1 FEET
-- 27" DOUGLAS FIR BEARS N88 1/2°E, 49.5 FEET, WELL HEALED FACE AND COUNTY BT TAG
-- 26" DOUGLAS FIR BEARS N71°E, 46.2 FEET, WELL HEALED FACE AND COUNTY BT TAG
-- HAINES T-IRON BEARS S8 1/2°E, 6.45 FEET
CORNER APPROXIMATELY 1 CHAIN NORTH OF YOUNG FIR TIMBER AND IN PLANTED PINE STAND. CORNER IS ALSO APPROXIMATELY 55 FEET SOUTH OF MAIN RIDGE.
- (10) SOUTH 1/16 CORNER SECTION 30 ONLY
FOUND HAINES T-IRON 0.6 FEET ABOVE GROUND.
-- 27" DOUGLAS FIR BEARS N35°E, 28.3 FEET, WE SCRIBE BT IN FACE AND TAG TREE
-- 24" DOUGLAS FIR BEARS N45°E, 17.7 FEET, WE SCRIBE BT AND TAG TREE. THIS TREE IS ALSO A BEARING TREE FOR IMPROPER HAINES S 1/16 (WHICH IS MISSING, POSSIBLY UNDER LARGE OF WINDTHROW) OLD BT TAG REPRESENTING IMPROPER RECORD CORNER READS N89°E, 27.2 FEET
CORNER SITS ON AN EXTREMELY STEEP NORTHEAST SLOPE, SMALL DRAW APPROXIMATELY 20 FEET EAST AND MAIN DRAW IS NORTH APPROXIMATELY 200 FEET.
- (11) WEST 1/4 CORNER FOR SECTION 30 ONLY
FOUND COUNTY BRASS CAP 1.0 FEET ABOVE GROUND.
-- 43" DOUGLAS FIR BEARS N58°W, 7.7 FEET FROM FACE (RECORD 7.3 FROM FACE), TREE SHOWS AXE WORK AND HAS BT TAG
-- 19" DOUGLAS FIR BEARS S73°E, 22.7 FEET (RECORD 22.5 FEET) HEALED SCAR AND BT TAG
-- HAINES T-IRON BEARS N53°21'W, 37.1 FEET (RECORD N55°W, 37.3 FEET)
-- BEARING TREE FOR HAINES T-IRON IS A 36" DOUGLAS FIR BEARING S75°W, 50.0 FEET, HIGH SQUARED FACE
CORNER SITS ON SOUTH FACING SLOPE AT EAST EDGE OF SMALL POCKET OF OLD GROWTH TREES.
- (12) SOUTHEAST CORNER SECTION 24, T22S, R7W
FOUND HAINES T-IRON IN GOOD CONDITION.
-- 10" DEAD MAPLE BEARS S68°W, 31.5 FEET (RECORD 30.3 FEET) SCRIBING VISIBLE AND BT TAG
-- 28" WESTERN RED CEDAR BEARS N8°E, 28.2 FEET, SCRIBING BARELY VISIBLE BT TAG (TREE IS NEARLY ROTTEN OFF STUMP, BUT ALIVE)
-- 12" MAPLE BEARS S39°E, 13.5 FEET, WELL HEALED FACE BT TAG
CORNER LIES ON EXTREMELY STEEP EAST SLOPE, 6.8 CHAINS EAST OF RIDGE TOP AND APPROXIMATELY 3 CHAINS WEST OF CREEK BOTTOM.
- (13) NORTHWEST SECTION CORNER SECTION 30
FOUND COUNTY BRASS CAP IN GOOD CONDITION.
-- 48" DOUGLAS FIR BEARS N80°E, 13.5 FEET, CHOPPED OUT FACE AND 4 TAGS
-- 9" DOUGLAS FIR BEARS S57°E, 9.6 FEET, WELL HEALED FACE AND BT TAG
-- 8" DOUGLAS FIR BEARS N30°E (RECORD N36°E) 11.6 FEET WELL HEALED FACE AND BT TAG
-- 12" DOUGLAS FIR BEARS S77°E, 2.4 FEET, LRT LOCATION TAG
CORNER SITS ON SOUTH EDGE OF SPUR RIDGE SLOPING NE, WITH VERY STEEP EAST SIDE SLOPE. APPROXIMATELY 260 FEET WEST OF CREEK.
- (14) NORTHWEST 1/16 CORNER SECTION 30
FOUND HAINES T-IRON FOR PROPER NW 1/16 AND HAINES T-IRON FROM RECORDED SURVEY.
-- 24" DOUGLAS FIR BEARS N32°E, 23.3 FEET (RECORD 22.9 FEET) TO RECORDED CORNER. WE REFERENCE TO T-IRON FOR PROPER NW 1/16 N42°E, 23.5 FEET, PUT UP LRT LOCATION TAG
-- 19" DOUGLAS FIR BEARS S89°E, 20.6 FEET (RECORD EAST 20.0 FEET) TO RECORDED CORNER. WE REFERENCE TO T-IRON FOR PROPER NW 1/16 S67 1/2°W, 7.4 FEET, PUT UP LRT LOCATION TAG
PROPER CORNER SITS ON WEST SIDE OF MAIN RIDGE APPROXIMATELY 1 CHAIN WEST OF TOP.
- (15) WEST 1/16 CORNER BETWEEN SECTIONS 30 AND 19
FOUND HAINES T-IRON FOR PROPER WEST 1/16 AND HAINES T-IRON FROM RECORDED SURVEY.
-- 48" DOUGLAS FIR STUMP BEARS S9 1/2°W, 59.3 FEET WITH LOCATION TAG TO RECORDED CORNER. WE REFERENCE TO T-IRON FOR PROPER W 1/16 S34°W, 77.5 FEET, WE PUT UP LRT LOCATION TAG
-- 41" DOUGLAS FIR STUMP BEARS N24°W, 47.7 FEET (RECORD 48.1 FEET), HAINES BRASS WASHER ON STUMP, WE REFERENCE TO T-IRON FOR PROPER W 1/16 N56°W, 67.2 FEET
-- 22" DOUGLAS FIR BEARS N18 1/2°W, 112.0 FEET (RECORD N17 1/2°W, 111.0 FEET) THIS REFERENCES RECORDED CORNER NOT PROPER W 1/16
-- 21" DOUGLAS FIR BEARS S77 1/2°W, 152.0 FEET (RECORD 148.0 FEET), WE CHOP INTO FACE AND FIND SCRIBING. THIS REFERENCES RECORDED CORNER NOT PROPER W 1/16
-- NEW BT FOR PROPER 1/16 CORNER 8" DOUGLAS FIR BEARS N18°E, 13.4 FEET, WE SCRIBE W 1/16 S19 BT AND TAG TREE.
-- PROPER W 1/16 TO RECORDED T-IRON IS S82°W, 36.2 FEET
CORNER SITS ON SOUTH EDGE OF VERY SHALLOW WEST SLOPING DRAW.
- (16) CENTERNORTH 1/16 CORNER SECTION 30
FOUND HAINES T-IRON FOR PROPER CN 1/16 AND HAINES T-IRON FROM RECORDED SURVEY.
-- 51" DOUGLAS FIR BEARS N4 1/2°W, 70.0 FEET WELL HEALED FACE AND BT TAG. REFERENCE RECORDED CORNER.
-- WE REFERENCE TO PROPER T-IRON N21°W, 70.2 FEET AND PUT UP LRT LOCATION TAG
-- PROPER CN 1/16 TO RECORDED T-IRON IS S83°W, 17.9 FEET
-- NEW BT 10 1/2" DOUGLAS FIR BEARS S11 1/2°E, 18.0 FEET, WE SCRIBE CN 1/16 S30 BT AND TAG TREE
CORNER LIES ON ADJEST WEST FACING SLOPE WITH CLEARCUT TO SOUTHWEST.
- (17) CENTER 1/4 CORNER SECTION 30
FOUND HAINES T-IRON FOR PROPER C 1/4 AND HAINES T-IRON FROM RECORDED SURVEY.
-- 22" DOUGLAS FIR BEARS N65°E, 4.0 FEET TO PROPER C 1/4, 1 TAG TREE.
-- 16" DOUGLAS FIR BEARS N84°E, 21.3 FEET TO RECORD C 1/4, 1 TAG TREE.
-- DOWN HEAVILY DECAYED DOUGLAS FIR WITH SCAR ON TRUNK BEARS N85°W, 23.3 FEET TO RECORD C 1/4 FROM STUMP HOLE.
-- FROM PROPER C 1/4 TO RECORDED HAINES T-IRON IS N47°40'W, 18.2 FEET.
CORNER LIES ON VERY STEEP ROCKY NORTH FACING SLOPE.
- (18) CENTERWEST 1/16 CORNER FOR SECTION 30
FOUND HAINES T-IRON FOR PROPER CW 1/16 AND HAINES T-IRON FROM RECORDED SURVEY.
-- 56" DOUGLAS FIR BEARS S6°E, 53.5 (RECORD 56 FEET), WELL HEALED FACE AND B.T. TAG. THIS TREE BEARS S21°20'W, 35.8 FEET FROM PROPER CW 1/16.
-- 30" DOUGLAS FIR HIGH SLOPED STUMP BEARS N55°W, 36.6 FEET (RECORD N55 1/2°W, 37.8 FEET) HEALED FACE NO TAGS. THIS STUMP BEARS N50°W, 63.4 FEET TO PROPER CW 1/16.
-- FROM PROPER CW 1/16 TO RECORDED T-IRON IS N43°10'W, 27.2 FEET.
THIS LIES ON EDGE OF CLEARCUT APPROXIMATELY 70 FEET SOUTH OF DIRT RIDGETOP ROAD.