

JUN 14 1993

OREGON CORNER RESTORATION FORM

Section 24 Township 22S Range 5W

COUNTY SURVEYOR  
DOUGLAS COUNTY, ORE.

County DOUGLAS Date 8 JUNE 1993

Corner Designation

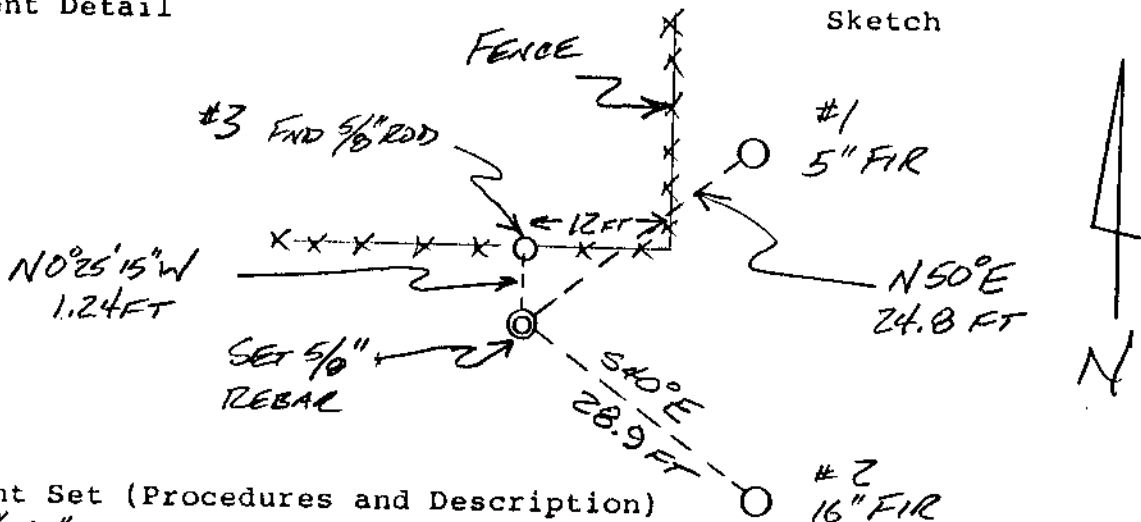
WEST 1/16 CORNER SECTIONS 24 & 25  Condition Report Only  
 Not Found  
 Renewed  
 Unrecorded  
 Surveyed In  
 Referenced Out

Previous Renewals/Surveys, etc. M 71-16 BY WILFORD N. HAINES  
MAY 2, 1978

Monument(s) & Accessories Found: (Condition and Source)

FOUND 5/8" ROD SET BY HAINES IN E-W FENCE LINE.  
ROD WAS FOUND TO BE 1.24 FEET NORTH OF THE  
SECTION LINE. ONE OF HAINES' BTs WAS FOUND (9" D. FIR  
S40°E 30.6 FT) AND WAS USED AS A BT FOR THE TRUE CORNER.  
HAINES' 5/8" ROD IS NOTED AS AN ACCESSORY.

Monument Detail



Monument Set (Procedures and Description)

SET 5/8" x 30" REBAR WITH YELLOW PLASTIC CAP MARKED "BRANCH ENG LS 1138."  
CORNER WAS SET ON THE SECTION LINE MIDWAY BETWEEN  
THE S.W. SECTION CORNER OF SEC 24 & THE SOUTH 1/4 CORNER  
OF SECTION 24.

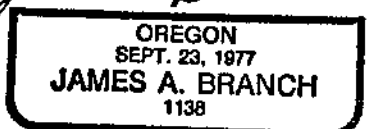
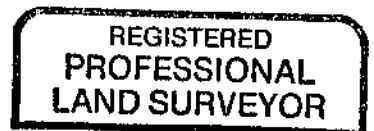
New Accessories

- #1 - A 5" FIR BEAM N50°E 24.8 FT SCRIBED W/1/16 S24 BT WITH PEN & BRASS W/ENG "LS 1138"
- #2 - A 16" FIR BEAM S40°E 28.9 FT SCRIBED BY HAINES IN 1978 FACE NOW CLOSED
- #3 - A 5/8" STEEL ROD BEARS N0°25'15"W 1.24 FEET (SET BY HAINES  
IN 1978)

Location & Comments

Compass Declination 70°E  
Firm/Agency BRANCH  
ENGINEERING  
Address 310 N 5th ST.  
SPRINGFIELD, OR  
Party Chief T. MONTGOMERY  
Notes \_\_\_\_\_  
Witness R. ANDERSEN

Surveyor's Seal



EXPIRES 31 DEC '93  
O.S. File No. 63/153-