

FILED *JP*

JUN 14 1993

OREGON CORNER RESTORATION FORM

COUNTY SURVEYOR  
DOUGLAS COUNTY, ORE.

Section 24 Township 22S Range 5W

County DOUGLAS Date 8 JUNE 1993

Corner Designation

N. W 1/16 COR. SECTION 24

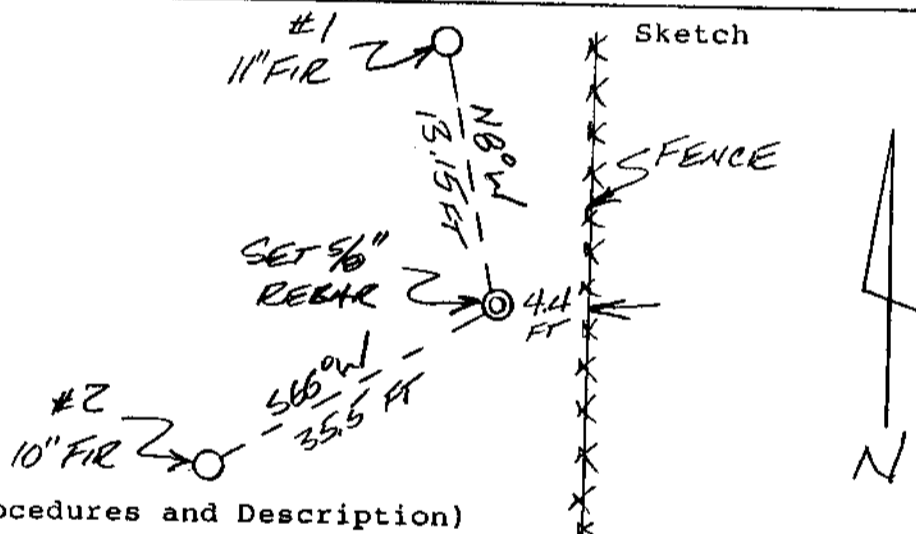
- Condition Report Only
- Not Found
- Renewed
- Unrecorded
- Surveyed In
- Referred Out

Previous Renewals/Surveys, etc. NONE

Monument(s) & Accessories Found: (Condition and Source)

NONE

Monument Detail



Monument Set (Procedures and Description)

SET 5/8" X 30" REBAR WITH YELLOW PLASTIC CAP MARKED "BRANCH ENG LS 1138." CORNER WAS SET AT THE INTERSECTION PT OF THE LINES THROUGH THE OPPOSITE MIDDPOINTS OF THE FOUR SIDES OF THE N.W. 1/4 OF SECTION 24

New Accessories

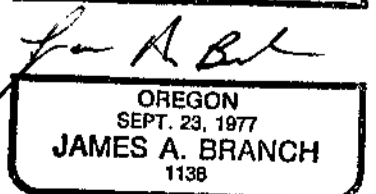
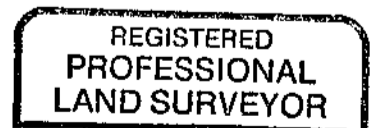
#1 - AN 11" FIR BEARS NB<sup>0</sup>W 13.15 FT SCRIBED NW 1/16 S24BT WITH PK NAIL & BRASS WASHER "LS 1138."

#2 - A 10" FIR BEARS S66<sup>0</sup>W 35.5 FT SCRIBED NW 1/16 S24BT WITH PK NAIL & BRASS WASHER "LS 1138."

Location & Comments

Surveyor's Seal

Compass Declination 20°E  
 Firm/Agency BRANCH ENGINEERING  
 Address 310 N 5th ST  
SPRINGFIELD, OR  
 Party Chief T. MONTGOMERY  
 Notes \_\_\_\_\_  
 Witness R. ANDERSEN



EXPIRES 31 DEC 1993

C.S. File No. 63/153-