

M 117-76

FILED *JP*

OREGON CORNER RESTORATION FORM

NOV 4 1993

Section 24 Township 315 Range 6W

COUNTY SURVEYOR
DOUGLAS COUNTY, ORE.

County Douglas Date Oct. 29, 1993

Corner Designation

$\frac{1}{4}$ $\frac{524}{525}$

- Condition Report Only
- Not Found
- Renewed
- Unrecorded
- Surveyed In
- Referenced Out

Previous Renewals/Surveys, etc.

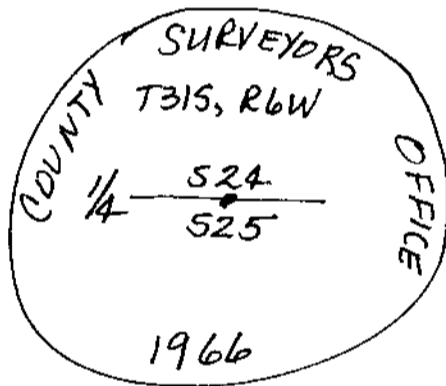
Douglas County Surveyor's Office, John Powell,
Sept. & Oct. 1966, CS File 54/31.

Monument(s) & Accessories Found: (Condition and Source)

Found 2 1/2" Brass Cap on a 1" Iron Pipe, from which a:
18" Hemlock BT (record 8"), face overgrown, bears
N33°W (record N36°W), 65 1/2 feet.
36" D. Fir BT Stump, scribes visible, bears S70°W,
66 1/2 feet to face.
20" W. Fir BT (record 7"), face overgrown, bears
N85°E, 34 3/4 feet. (Record N82°E, 34 1/2 feet.)

Monument Detail

Sketch



Monument Set (Procedures and Description)

NONE.

New Accessories

12" D. Fir BT, I scribed "1/4 525 BT" bears S46°E, 17 1/2 feet.
6 Foot Steel Fence Post, I set South, 0.5 feet.

Location & Comments

Corner lies on steep
North Slope about
250 feet South of
Creek & Logging Road.

Compass Declination 20°E

Firm/Agency Shaner

Engineering, INC.

Address P.O. Box 1430

Roseburg, Oregon 97470

Party Chief B.A. Shaner

Notes " "

Witness John Wright

Clem Berlier

Surveyor's Seal

REGISTERED
PROFESSIONAL
LAND SURVEYOR

Bruce A. Shaner

OREGON
OCT. 4, 1957
BRUCE A. SHANER
430

Expires Dec. 31, 1994

C.S. File No. 63/153 44