

M 117-76

FILED *JP*

OREGON CORNER RESTORATION FORM

NOV 4 1993

Section 24 Township 31S Range 6W

COUNTY SURVEYOR
DOUGLAS COUNTY, ORE.

County Douglas Date Oct. 29, 1993

Corner Designation

514 | 513
523 | 524

- Condition Report Only
- Not Found
- Renewed
- Unrecorded
- Surveyed In
- Referenced Out

Previous Renewals/Surveys, etc.

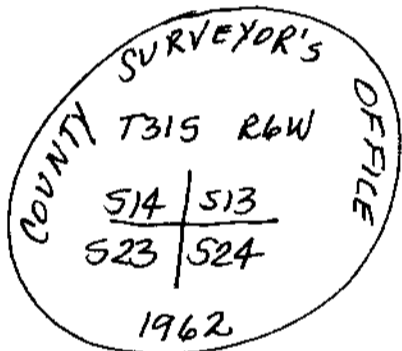
Douglas County Surveyor Byron, Aug. 31, 1962; (S File 52/25.

Monument(s) & Accessories Found: (Condition and Source)

Found 2 1/2" Brass Cap on a 1" Iron Pipe, from which a:
10" Madrone BT, scribes visible, bears S20°W, 13± feet.
46" D. Fir BT, scribes visible, bears S73°E, 21± feet.
50" D. Fir BT, now blown down & gone, bears N32°E, 29± feet.
12" D. Fir BT, face overgrown, bears S72°W, 33± feet.

Monument Detail

Sketch



Monument Set (Procedures and Description)

None.

New Accessories

6" Chinquapin BT, I scribed "T31S, R6W, 514, BT"
bears N3°W, 22± feet.
No trees near in NE Quadrant.

Location & Comments

Corner is 50 feet
South of main logging
& mining road.

Compass Declination 20°E

Firm/Agency Shaner
Engineering, Inc.

Address P.O. Box 1430
Roseburg, Oregon 97470

Party Chief B.A. Shaner

Notes " "

Witness John Wright
Chm Berlier

Surveyor's Seal



Bruce A Shaner



Expires Dec. 31, 1994

C.S. File No. 63/153-41