

R.M. 3-79

FILED JP

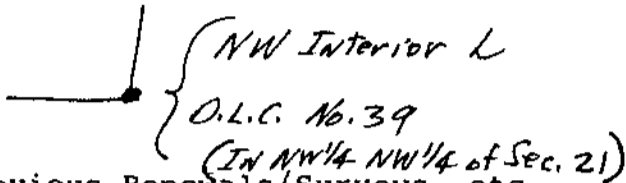
SEP 2 1993

OREGON CORNER RESTORATION FORM
Donation Land Claim No. 39
Section 21 Township 29S Range 4W

COUNTY SURVEYOR
DOUGLAS COUNTY, ORE.

County Douglas Date Aug. 28, 1993

Corner Designation



- Condition Report Only
- Not Found
- Renewed
- Unrecorded
- Surveyed In
- Referenced Out

Previous Renewals/Surveys, etc.

Beyer, 1938 (Deputy County Surveyor)
Also see Renewal #40 & 52 ("W" Wood, 1925).

Monument(s) & Accessories Found: (Condition and Source)

Found a 2" Coupling on a 1 1/2" Iron Pipe, at very
old fence corner with fence going West & North.
This appears to be corner called by Beyer in 1938.

We tied for informational purposes only. (See Map).

Monument Detail

Sketch

Monument Set (Procedures and Description)

None

New Accessories

None

Location & Comments

County Surveyor
may wish to
re monument this
& NW corner
DLC # 39 to
North.
BAJ

Compass Declination 20 1/2° E
Firm/Agency Shaner
Engineering, Inc.
Address P.O. Box 1430
Roseburg, OR
Party Chief B. Shaner
Notes " "
Witness J. Wright
D. Stone

Surveyor's Seal

REGISTERED
PROFESSIONAL
LAND SURVEYOR

Bruce A. Shaner

OREGON
OCT. 4, 1957
BRUCE A. SHANER
430

Expires Dec 31, '94.
C.S. File No. 63/153-
29