

M 112-78

FILED ^{SC}

OREGON CORNER RESTORATION FORM

JUL 23 1993

Section 30 Township 28S Range 8W

COUNTY SURVEYOR
DOUGLAS COUNTY, ORE.

County Douglas Date July 3, 1993

Corner Designation

$\frac{1}{4}$ $\frac{519}{530}$

- Condition Report Only
- Not Found
- Renewed
- Unrecorded
- Surveyed In
- Referenced Out

Previous Renewals/Surveys, etc.

See Renewal by Douglas County Deputy Surveyor James W. Byron, Sept., 1957.

Monument(s) & Accessories Found: (Condition and Source)

I found a 2 1/2" Brass Cap on a 1" Iron Pipe, from which a: 20" W. Fir BT (record 12"), face overgrown, bears N61°E, 137 feet.

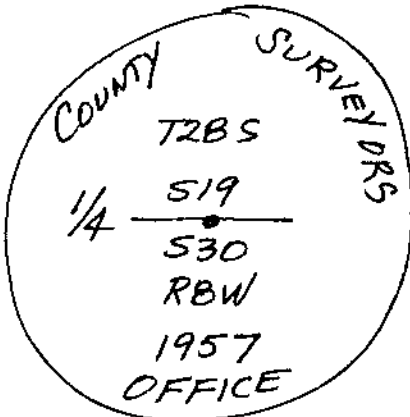
24" W. Fir BT (record 14"), bears S62°E, 200 feet. Face is overgrown.

72" D. Fir BT snag, no face or marks now visible, bears South, 24 1/2 feet to face.

Laurel BT snag, orig. BT, N35°W, 6 1/2 feet, Now Gone.

Monument Detail

Sketch



Monument Set (Procedures and Description)

None.

New Accessories

12" W. Fir BT, I scribed "1/4 S30 BT", bears S28°W, 28 3/4 feet.

8" W. Fir BT, I scribed "1/4 S19 BT", bears N3°W, 10 1/2 feet.

Location & Comments

Corner is N30°E ± 500 feet from end of old logging road to the West.

Compass Declination 20 1/2°E

Firm/Agency

Shaner Engineering, Inc.

Address P.O. Box 1430

Roseburg, OR 97470

Party Chief B. Shaner

Notes " "

Witness C.W. Berlier

Surveyor's Seal

REGISTERED PROFESSIONAL LAND SURVEYOR

Bruce A. Shaner

OREGON OCT. 4, 1957 BRUCE A. SHANER 430

EXPIRES 12-31-94-14

63/153C