

M 112-78

FILED JC

JUL 23 1993

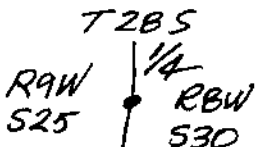
OREGON CORNER RESTORATION FORM

Section 30 Township 2B5 Range 8W

COUNTY SURVEYOR
DOUGLAS COUNTY, ORE.

County Douglas Date July 23, '93

Corner Designation



- Condition Report Only
- Not Found
- Renewed
- Unrecorded
- Surveyed In
- Referenced Out

Previous Renewals/Surveys, etc.

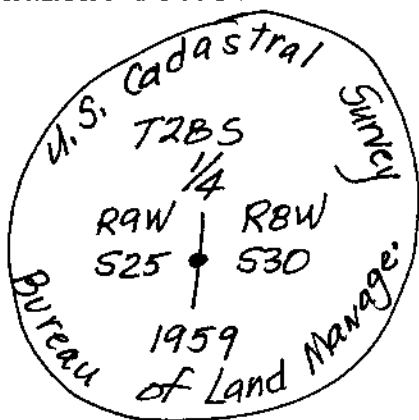
U.S.B.L.M. 1959 Renewal

Monument(s) & Accessories Found: (Condition and Source)

I found a 3 1/4" Brass Cap on a 2 1/2" Iron Pipe, from which a:
18" Hemlock BT stump (record 12"), face overgrown,
bears S39°E, 15 3/4 feet. (record 14 3/4 feet).
26" Hemlock BT (record 10"), face overgrown,
bears N39 1/2°W, 23 1/2 feet.

Monument Detail

Sketch



Monument Set (Procedures and Description)

None.

New Accessories

12" White Fir BT, I scribed "1/4 S25 BT", bears
N80°W, 47 3/4 feet.

22" White Fir BT, I scribed "1/4 S30 BT", bears
S1°E, 2 3/4 feet.

18" Hemlock BT, I scribed "1/4 S30 BT", bears S28°E, 40 3/4 feet.

Location & Comments

Corner is S60°E
about 400 feet from
U.S.B.L.M. Road
Junction.

Compass Declination 20 1/2°E

Firm/Agency Shaner Engineering, Inc.
 Address P.O. Box 1430, Roseburg

Party Chief B. Shaner
 Notes " "

Witness Derrick Stave

Surveyor's Seal

REGISTERED
PROFESSIONAL
LAND SURVEYOR

Bruce A Shaner

OREGON
OCT. 4, 1987
BRUCE A. SHANER
430

EXPIRES 12-31-94

CS File No. 63/153