

LONE ROCK TIMBER CO.

PO BOX 1127 ROSEBURG, OREGON 97470 JUNIPER PROPERTIES LIMITED PARTNERSHIP
SECTION 18, TOWNSHIP 23 SOUTH, RANGE 6 WEST, W.A. DOUGLAS COUNTY, OREGON
BLUE HOLE CR. SURVEY SCALE' 1" = 500' . DATE: FEB 1993

REGISTERED
PROFESSIONAL
LAND SURVEYOR
Ken W. Hoffine
OREGON
JULY 16, 1987
KEN W. HOFFINE
2291

EXPIRES 12-31-93

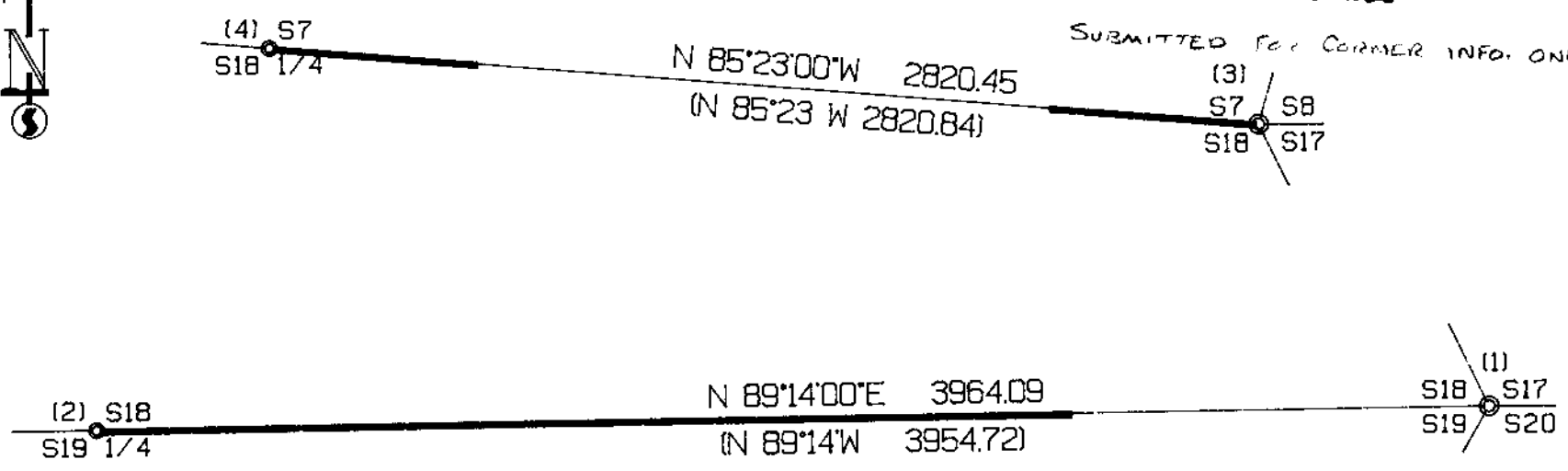
FILED *JP*

MICROFILMED
3/14/94

MAR 22 1993

COUNTY SURVEYOR
DOUGLAS COUNTY, ORE.

SUBMITTED FOR CORNER INFO. ONLY.



LEGEND:

- ⊙ - FOUND MONUMENT
- - PROJECTED LINES
- - LINES FLAGGED, BLAZED & TAGGED
- () - BLA RECORD SURVEY (CHAINS CONVERTED TO FEET)
DOUGLAS COUNTY SURVEYORS OFFICE

FILED *JP*

MAR 22 1993

COUNTY SURVEYOR
DOUGLAS COUNTY, ORE.

NARRATIVE

THIS SURVEY WAS CONDUCTED TO ESTABLISH PROPERTY LINES FOR TIMBER CUTTING PURPOSES. NO CORNERS WERE SET. THIS SURVEY IS DEPENDENT UPON A DEPENDENT RESURVEY OF T23S R6W IN 1957 BY BLA CADASTRAL SURVEYORS. WE INITIATED THE NORTH LINE SURVEY AT THE NE SECTION CORNER OF 18 TRAVERSING WEST TO THE NORTH 1/4 CORNER MARKING TRUE LINE BETWEEN CORNERS. WE INITIATED THE SOUTH LINE SURVEY AT THE SE SECTION CORNER OF 18 TRAVERSING WEST TO THE SOUTH 1/4 MARKING TRUE LINE BETWEEN CORNERS. SURVEY WAS DONE WITH A LEITZ 2 TOTAL STATION, WITH GARY ANGIOLET AND PAT KELLY ASSISTING ME.

CORNER INFORMATION

- (1) SOUTHEAST SECTION CORNER SECTION 18
FOUND BLA BRASS CAP 1.0 FEET ABOVE GROUND WITH HAINES T-IRON ALONG SIDE:
- 30" DOUG-FIR BEARS S41°30'W, 13.3 FEET VISIBLE SCRIBING AND 3 BLA TAGS
 - 30" DOUG-FIR BEARS N48 3/4°E, 30.25 FEET WELL HEALED SCAR, BLA TAG AND 1 TAG
 - 48" DOUG-FIR BEARS S23 3/4°E, 195.13 FEET WELL HEALED SCAR AND 2 BLA TAGS
 - 22" DOUG-FIR BEARS S37 3/4°W, 30.4 FEET WELL HEALED SCAR AND 2 BLA TAGS
 - 18" DOUG-FIR BLOWDOWN STUAP HOLE BEARS N51°W, 19.1 FEET, 2 BLA TAGS
 - 24" DOUG-FIR BEARS N0°30'E, 13.7 FEET 3 BLA TAGS
 - PUT P.K. NAIL IN ROOT OF 40" DOUG-FIR BEARS S1°43'52"E, 31.28 FEET
- CORNER LIES ON A VERY FLAT BENCH ON TOP OF SPUR RIDGE APPROXIMATELY 5 CHAINS EAST OF MAIN NORTH-SOUTH DRAW. 1 TAG A 4" DOUG-FIR ON ROAD NEAR SECTION LINE APPROXIMATELY 250 FEET WEST OF CORNER WITH A LONE ROCK TIMBER LOCATION TAG.
- (2) SOUTH 1/4 SECTION 18
FOUND BLA BRASS CAP 0.3 FEET ABOVE GROUND IN GOOD CONDITION:
- 7" DOUG-FIR VERY OLD BLOWDOWN, DECAYED TREE WITH BLA TAG ON ROOT BEARS N82°E, 45.0 FEET TO HOLE
 - 6" DOUG-FIR RECORD S50°E, 35.6 FEET FOUND NO TRACE, FOUND OLD B.T. TAG ON TOP OF RIDGE APPROXIMATELY 70 FEET SOUTH OF CORNER
 - POINT FOR HAINES S 1/4 BEARS N25°33'E, 19.79 FEET. COULD NOT FIND T-IRON USED BEARING AND DISTANCE FROM HAINES B.T.'S
 - 22" DOUG-FIR STUAP BEARS S 33°E, 11.5 FEET. SCRIBING VISIBLE. 1 TAG TO HAINES CORNER LOCATION
 - 10" DOUG-FIR STUAP NO MARKS BEARS N62°W, 34.8 FEET
 - 5" DOUG-FIR BEARS N34°W, 6.8 FEET FROM BLA CAP, 1 BLAZE AND TAG
 - 6" DOUG-FIR BEARS S44 1/2°E, 6.2 FEET FROM BLA CAP, 1 BLAZE AND TAG TREE.
- CORNER LIES ON 40% NORTH FACING SLOPE APPROXIMATELY 1 CHAIN NORTH OF TOP OF FLAT SPUR RIDGE IN HEAVY REPROD.
- (3) NORTHEAST SECTION CORNER SECTION 18
FOUND A BLA BRASS CAP IN GOOD CONDITION:
- HAINES T-IRON BEARS S16°E, 14.6 FEET
 - 12" DOUG-FIR SNAG BEARS N18°W, 37.5 FEET, WELL HEALED FACE AND B.T. TAG
 - 23" DOUG-FIR BEARS N19°E, 29.0 FEET, WELL FACE NO B.T. TAG
 - 24" DOUG-FIR BEARS S66°E, 44.1 FEET, WELL HEALED FACE AND B.T. TAG
 - 17" DOUG-FIR BEARS S25°W, 23.3 FEET, WELL HEALED FACE AND B.T. TAG
- CORNER SITS ON EXTREMELY STEEP SOUTHWEST SLOPE AT HEAD OF OLD SLUMP. BLA CLEARCUT LIES APPROXIMATELY 100 FEET TO THE NORTH.
- (4) NORTH 1/4 CORNER SECTION 18
FOUND BLA BRASS CAP IN GOOD CONDITION:
- HAINES T-IRON BEARS S20 1/3°W, 21.60 FEET
 - 28" DOUG-FIR BEARS N5°W, 15.0 FEET (RECORD 14.5)
 - 20" DOUG-FIR BEARS S35°E, 59.4 FEET, HEALED FACE AND BLA TAG
 - 30" DOUG-FIR BEARS N80°E, 16.4 FEET (TO HAINES CORNER), HEALED FACE AND TAG
 - 25" DOUG-FIR BEARS N27°W, 45.0 FEET (TO HAINES CORNER), HEALED FACE AND TAG
- CORNER LIES ON STEEP EAST FACING SLOPE ON SMALL SPUR RIDGE APPROXIMATELY 100 FEET SOUTHWEST OF HEAVILY TIMBERED BENCH.