

LONE ROCK TIMBER CO.

PO BOX 1127 ROSEBURG, OREGON 97470 JUNIPER PROPERTIES LIMITED PARTNERSHIP
 SECTION 10, TOWNSHIP 23 SOUTH, RANGE 6 WEST, W.M. DOUGLAS COUNTY, OREGON
 BRUSHY-SNAIL SURVEY SCALE 1" = 400' DATE: FEB 1993

REGISTERED
 PROFESSIONAL
 LAND SURVEYOR

Ken W. Hoffine

OREGON
 JULY 16, 1987
 KEN W. HOFFINE
 2291

EXPIRES 12-31-93

FILED *JP*

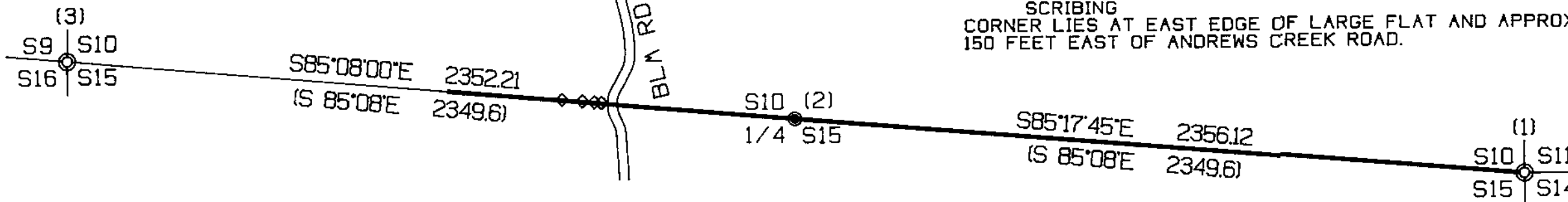
MAR 22 1993

COUNTY SURVEYOR
 DOUGLAS COUNTY, ORE.

SUBMITTED FOR CORNER
 INFORMATION ONLY

LEGEND:

- ⊙ - FOUND MONUMENT
- - LINES FLAGGED, BLAZED & TAGGED
- ◇◇◇ - APPROX. BOUNDARY LINE FENCE POSTS LOCATION
- () - BLM RECORD SURVEY (CHAINS CONVERTED TO FEET)
 DOUGLAS COUNTY SURVEYORS OFFICE



NARRATIVE

THIS SURVEY WAS CONDUCTED TO ESTABLISH PROPERTY LINES FOR TIMBER CUTTING PURPOSES. THIS SURVEY IS DEPENDENT ON A DEPENDENT RESURVEY OF T23S R6W BY BLM CADASTRAL SURVEYORS IN 1957. THIS SURVEY WAS INITIATED AT THE SW SECTION CORNER OF 10. A BLM BCIP MONUMENTATION FROM ORIGINAL BEARING TREES. WE TRAVERSED EAST TO THE S 1/4 OF SECTION 10. A BLM BCIP AT PROPORTIONATE ORIGINAL DISTANCE. WE CONTINUED TRAVERSING EAST TO THE SOUTH EAST SECTION CORNER OF 10 A BLM BCIP MONUMENTATION FROM ORIGINAL BEARING TREES. WE MARKED IN THE TIMBER TRUE LINE BETWEEN THE THREE CORNERS. WE FOUND A BLM TIMBER SALE CLEARCUT UNIT WEST OF WHERE THE SOUTH SECTION LINE OF SECTION 10 CROSSES THE ANDREWS CREEK BLM ROAD # 23-6-2.0. THAT THE BLM HAD CUT TIMBER BEYOND THE BLM PROPERTY LINE. THROUGH THIS CLEARCUT, WE INSTALLED 4 METAL FENCE POSTS WHICH WE PAINTED AND FLAGGED ON THE PROPERTY LINE BETWEEN SECTIONS 10 AND 15. SURVEY WAS DONE WITH A LEITZ SET 2 TOTAL STATIONS. WITH GARY ANGIOLET AND PAT KELLY ASSISTING ME.

CORNER INFORMATION

- (1) SOUTHEAST SECTION CORNER SECTION 10
 FOUND BLM BRASS CAP IN GOOD CONDITION:
 -- 48" DOUG-FIR BEARS N67°W, 12.5 FEET, BLM TAG
 -- 40" DOUG-FIR BEARS S3°E, 18.5 FEET, BLM TAG
 -- 48" DOUG-FIR BEARS N38°E, 66.0 FEET, BLM TAG
 CORNER LIES ON MODERATE EAST FACING SLOPE WITH BLAZE LINES RUNNING WEST, EAST, AND SOUTH OF THE CORNER.
- (2) SOUTH 1/4 CORNER SECTION 10
 FOUND BLM BRASS CAP IN GOOD CONDITION:
 -- FOUND ROTTEN REMAINS OF DOWN LOG WITH PARTIAL SCRIBING IN BURNED FACE BEARS S65°E, 25.0 FEET (RECORD S65 1/2°E, 27.1 FEET)
 -- FOUND STUMP HOLE BEARING N18°W, 21.0 FEET AS PER 1957 NOTES
 -- 11" DOUG-FIR BEARS N35°W, 22.4 FEET
 -- 15" DOUG-FIR BEARS S30°W, 27.9 FEET
 -- 12" HEALOCK BEARS S40°E, 12.0 FEET, 1 TAG
 CORNER LIES IN STAND OF YOUNG TREES APPROXIMATELY 600 FEET EAST OF OF ANDREWS CREEK ROAD. FROM METAL FENCE POST NEAR NORTH END OF THE BLM CLEARCUT.
- (3) SOUTHWEST SECTION CORNER SECTION 10
 FOUND BLM BRASS CAP IN GOOD CONDITION:
 -- 56" DOUG-FIR BEARS N33°E, 29.4 FEET, AXE WORK AND BLM TAG
 -- 8" DOUG-FIR STUMP BEARS N64°E, 68.7 FEET (RECORD N65°E, 66.0 FEET), NO MARKS
 -- 24" DOUG-FIR STUMP BEARS S60°E, 38.3 FEET (RECORD S70°E, 38.3 FEET), WELL HEALED FACE
 -- 38" MAPLE BEARS S41°W, 57.4 FEET (RECORD S30°W, 57.4 FEET), OLD FACE NO SCRIBING BLM TAG
 -- 18" LOW DOUG-FIR STUMP BEARS N63°W, 44.7 FEET (RECORD N85°W, 45.7 FEET) FOUND PART OF 'B' AND WHOLE 'T' SCRIBING
 CORNER LIES AT EAST EDGE OF LARGE FLAT AND APPROXIMATELY 150 FEET EAST OF ANDREWS CREEK ROAD.