

LONE ROCK TIMBER CO.

PO BOX 1127 ROSEBURG, OREGON 97470 JUNIPER PROPERTIES LIMITED PARTNERSHIP
SECTION 1, TOWNSHIP 23 SOUTH, RANGE 7 WEST, W.M. DOUGLAS COUNTY, OREGON
BELL RIDGE SURVEY SCALE 1" = 400' DATE: FEB 1993

REGISTERED
PROFESSIONAL
LAND SURVEYOR
Ken W. Hoffine
OREGON
JULY 16, 1987
KEN W. HOFFINE
2281
EXPIRES 12-31-93

THIS SURVEY SUBMITTED
FOR PUBLIC INFORMATION
ONLY

FILED

MAR 4 1993

COUNTY SURVEYOR
DOUGLAS COUNTY, OREGON

NARRATIVE

THIS SURVEY WAS CONDUCTED TO ESTABLISH PROPERTY LINES FOR TIMBER CUTTING PURPOSES. NO CORNERS WERE SET. THIS SURVEY IS DEPENDENT UPON A SURVEY BY WILFORD HAINES FILED IN DOUGLAS COUNTY SURVEY RECORDS #A11-25. WE INITIATED THIS SURVEY AT A BLA BCIP FOR THE E 1/4 OF SECTION 1 TRAVERSING NORTH TO HAINES T-BAR SET FOR THE NORTH 1/16 BETWEEN SECTION 1 OF T23S R7W AND SECTION 1 OF T23S R6W. WE THEN TRAVERSE WESTERLY TO HAINES T-BAR SET FOR THE NE 1/16 OF SECTION 1 AND CONTINUE TRAVERSING WESTERLY TO THE CENTER NORTH 1/16 WHICH WE REESTABLISH FROM TWO OF HAINES MARKED B.T. TREES. WE CONTINUE OUR TRAVERSE TO THE NE SECTION CORNER OF ONE AND THEN CLOSE OUR TRAVERSE TO THE E 1/4 OF SECTION 1. OUR CALCULATIONS SHOW HAINES'S N 1/16 TO BE N40°E, 8.8 FEET FROM OUR TRUE POINT. SUBDIVISION OF SECTION 1 IS BASED ON THIS CORNER AND I CONSIDERED THE AGE OF THIS CORNER (1958), THE USE (TIMBER CUTTING AND MANAGEMENT FOR 35 YEARS) AND THE RUGGED, REMOTE NATURE OF THE LAND TO DECIDE TO ACCEPT THIS CORNER. WE MARK TRUE LINES BETWEEN CORNERS AS SHOWN ON THIS MAP. SURVEY WAS DONE WITH LEITZ SET 2 TOTAL STATION, WITH GARY ANGIOLET AND PAT KELLY ASSISTING ME.

CORNER INFORMATION

(1) WEST 1/4 CORNER SECTION 1

- FOUND GLO BRASS CAP 0.6 FEET ABOVE GROUND IN GOOD CONDITION
- HAINES T-IRON BEARS N15°E, 16.7 FEET
- 31" DOUG-FIR HIGH STUMP BEARS S37°E, 70.9 FEET, METAL COVER AND B.T. TAGS
- 50" DOUG-FIR BEARS N85°W, 142.8 FEET WELL HEALED FACE
- HAINES WASHER, LOCATION TAG
- 15" CHINKAPIN BEARS N75°W, 133.0 FEET, NO SCAR
- 14" DOUG-FIR BEARS N38°W, 15.85 FEET, BLAZE AND LOCATION TAG
- 12" DOUG-FIR BEARS S79°E, 14.10 FEET, BLAZE AND LOCATION TAG

CORNER SITS ON STEEP SOUTHEAST SLOPE APPROXIMATELY 100 FEET FROM TOP OF FLAT RIDGE.

(2) CLOSING CORNER FOR T23S R7W SECTION 1 AND T23S R6W SECTION 6

- FOUND GLO BRASS CAP 1.0 FEET ABOVE GROUND AND IN GOOD CONDITION
- HAINES T-IRON BEARS S37 3/4°E, 13.3 FEET
- 29" DOUG-FIR BEARS S25°W, 63.8 FEET, WELL HEALED FACE AND B.T. TAG
- 32" DOUG-FIR BEARS S65°W, 61.1 FEET, WELL HEALED FACE, HAINES BRASS WASHER AND LONE ROCK TIMBER LOCATION TAG
- 50" DOUG-FIR BEARS N86°E, 54.5 FEET WELL HEALED FACE, HAINES BRASS WASHER AND LONE ROCK TIMBER LOCATION TAG

CORNER LIES ON 40% WEST SLOPE APPROXIMATELY 105 FEET EAST OF CLOSING CORNER FOR T22S R7W SECTION 36 AND T22S R6W SECTION 31 AND APPROXIMATELY 205 FEET EAST OF BRUSH CREEK ROAD.

(3) N 1/16 CORNER BETWEEN T23S R7W SECTION 1 AND T23S R6W SECTION 6

- FOUND HAINES T-IRON IN GOOD CONDITION
- 50" DOUG-FIR BEARS S22°W, 38.6 FEET (RECORD S25°W, 37.2) WELL HEALED SCAR, 1 TAG TREE.
- 48" DOUG-FIR STUMP BEARS N42°W, 13.6 FEET (RECORD N47°W, 13.7) NO MARKS VISIBLE

CORNER LIES ON STEEP NORTHWESTERLY SLOPE, APPROXIMATELY 50 FEET EAST OF CREEK. LINE PAINTED AND BLAZED RUNNING SOUTH AND WEST FROM CORNER.

(4) NE 1/16 CORNER SECTION 1

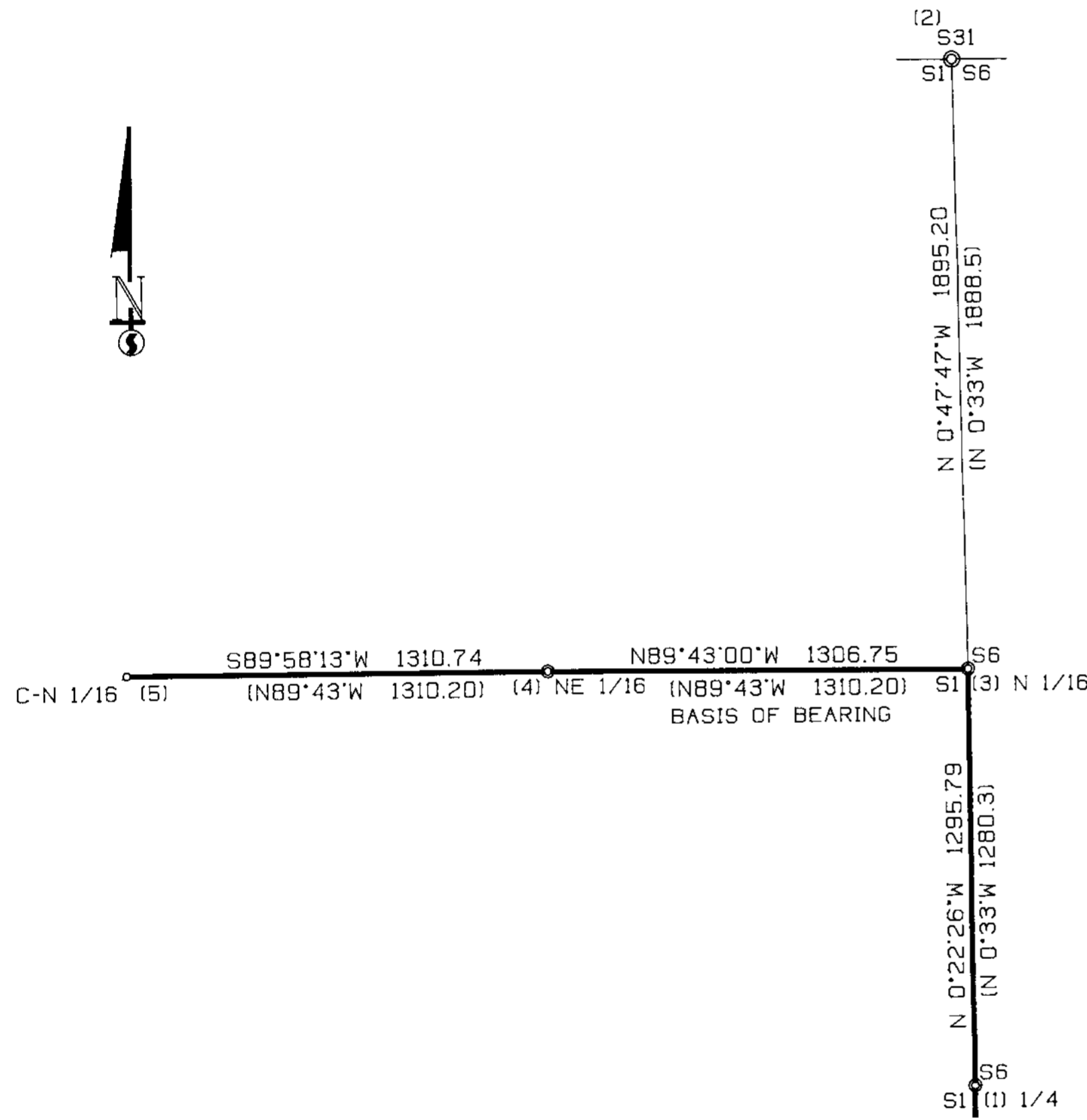
- FOUND HAINES T-IRON IN GOOD CONDITION 0.5 FEET ABOVE GROUND
- 23" DOUG-FIR BEARS S8°W, 67.0 FEET (RECORD S10°W, 67.0 FEET) BARK SCRIBED, 1 TAG TREE.
- 26" DOUG-FIR SNAG BEARS N25°E, 2.5 FEET (RECORD S24°W, 2.5 FEET) BARK SCRIBED, 1 TAG TREE.

CORNER LIES ON STEEP SOUTHEAST SLOPE APPROXIMATELY 200 FEET WEST OF MAIN DRAW (DRAW RUNS N15°E) AND APPROXIMATELY 70 FEET SOUTH OF SHALLOW STEEP SWALE.

(5) CN 1/16 CORNER SECTION 1

- COULD NOT FIND ANY TRACE OF HAINES T-IRON. POINT FOR CORNER LIES ON EXTREMELY STEEP ROCK FACE, THE CORNER APPEARS TO HAVE BEEN DISLODGED FROM ROCK. SET A 5/8" X 30" IRON ROD WITH 2 1/2" ALUMINUM CAP BY PULLING BEARING AND DISTANCE FROM BOTH OF HAINES BEARING TREES.
- 34" DOUG-FIR BEARS S28°W, 85.5 FEET BARK SCRIBING VISIBLE, 1 TAG TREE.
- 23" DOUG-FIR BEARS N19°E, 26.0 FEET WELL HEALED SCAR, 1 TAG TREE.

CORNER LIES ON EXTREMELY STEEP EAST FACING SLOPE, APPROXIMATELY WEST 250 FEET FROM MAIN DRAW. LINE BLAZED AND PAINTED RUNNING NORTH AND EAST FROM CORNER.



LEGEND:

- ⊙ - FOUND MONUMENT
- - REESTABLISHED CORNER MONUMENT
- - PROJECTED LINES
- - LINES FLAGGED, BLAZED & TAGGED
- () - WILFORD HAINES RECORD SURVEY FILED IN DOUGLAS COUNTY SURVEYORS OFFICE #A26-80