

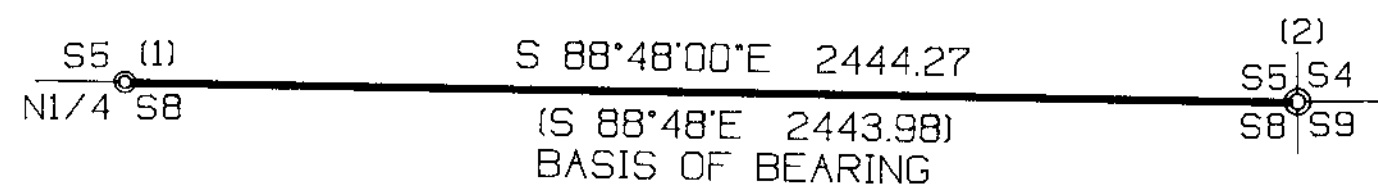
LONE ROCK TIMBER CO.

PO BOX 1127 ROSEBURG, OREGON 97470 JUNIPER PROPERTIES LIMITED PARTNERSHIP
SECTION 8, TOWNSHIP 23 SOUTH, RANGE 6 WEST, W.A. DOUGLAS COUNTY, OREGON
BRUSH CREEK-S8 SURVEY SCALE 1" = 400' . DATE: FEB 1993

REGISTERED
PROFESSIONAL
LAND SURVEYOR
Ken W. Hoffine
OREGON
JULY 16, 1987
KEN W. HOFFINE
2291
EXPIRES 12-31-93

FILED *JF*
MAR 4 1993
COUNTY SURVEYOR
DOUGLAS COUNTY, ORE.

SUBMITTED FOR CORNER
INFORMATION ONLY



LEGEND:

- ⊙ - FOUND MONUMENT
- - LINES FLAGGED, BLAZED & TAGGED
- () - BLM RECORD SURVEY (CHAINS CONVERTED TO FEET) DOUGLAS COUNTY SURVEYORS OFFICE

NARRATIVE

THIS SURVEY WAS CONDUCTED TO ESTABLISH PROPERTY LINES FOR TIMBER CUTTING PURPOSES. NO CORNERS WERE SET. THIS SURVEY IS DEPENDENT UPON BLM CADASTRAL SURVEY OF TOWNSHIP 23 SOUTH, RANGE 6 WEST ACCEPTED 1960. WE INITIATED THE SURVEY AT THE N1/4 OF SECTION 8 AND TRAVERSED EAST TO THE NORTHEAST SECTION CORNER OF SECTION 8, MARKING THE TRUE LINE BETWEEN CORNERS. SURVEY WAS DONE WITH A LEITZ SET 2 TOTAL STATION, WITH GARY ANGIOLET AND PAT KELLY ASSISTING ME

CORNER INFORMATION

- (1) NORTH 1/4 CORNER SECTION 8
FOUND BLM BRASS CAP IN MOUND OF STONES
-- 22° HEMLOCK BEARS N7°W, 26.4 FEET (RECORD 41LKS-27.06 FEET), WELL HEALED SCAR AND BLM TAG
-- 23° WESTERN RED CEDAR BEARS S13°E, 8.0 FEET NO SCAR VISIBLE, BLM TAG AND I TAG
CORNER LIES ON FLAT BENCH APPROXIMATELY 20 FEET EAST OF CREEK, AND APPROXIMATELY 130 FEET WEST OF THE 23-6-8.0 GRAVEL ROAD WHERE A 12" ALDER HAS A BLM LOCATION TAG.
- (2) NORTH EAST SECTION CORNER SECTION 8
FOUND BLM BRASS CAP 1.0 FOOT ABOVE GROUND IN MOUND OF STONES
-- 19° CEDAR BEARS N33°E, 35.5 FEET (RECORD 35.04 FEET), WELL HEALED SCAR AND 2 BLM TAGS
-- 22° HIGH CEDAR STUMP BEARS S42°W, 44.4 FEET (RECORD 44.9 FEET), SCRIBES VISIBLE BLM B.T. TAGS
-- 29° CEDAR BEARS N34°W (RECORD N32°W), 36.3 FEET SCRIBING VISIBLE, BLM TAG
-- 24° DOUG-FIR STUMP BEARS S20°E, 10.3 FEET (RECORD 10.6 FEET) HEAVILY FIRE SCARED WITH OLD AXE MARKS AND BLM TAG
-- 20° CEDAR BEARS N55°W, 12.0 FEET (RECORD N53°W, 12.7 FEET) SCRIBING VISIBLE B.T. TAG
-- 24° HIGH CEDAR STUMP BEARS S46°W (RECORD S44°W), 36.7 FEET SCRIBING VISIBLE, BLM LOCATION TAG, I ALSO TAG
CORNER LIES ON STEEP EAST FACING SLOPE APPROXIMATELY 50 FEET EAST OF RIDGE BEARING NORTH-SOUTH, REPROD UNIT TO EAST OF CORNER.