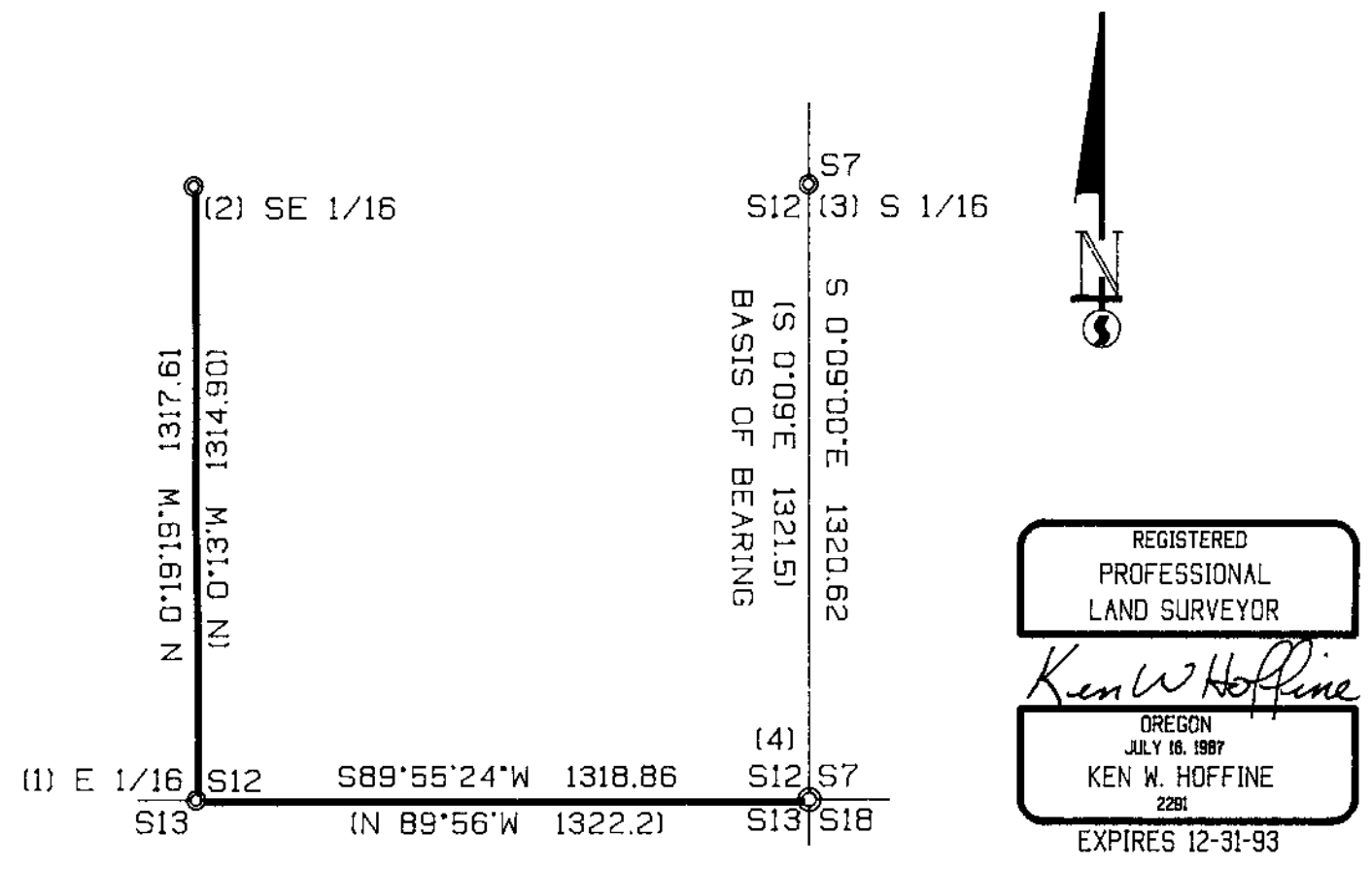


LONE ROCK TIMBER CO.

PO BOX 1127 ROSEBURG, OREGON 97470 JUNIPER PROPERTIES LIMITED PARTNERSHIP
 SECTION 12, TOWNSHIP 23 SOUTH, RANGE 4 WEST, W.M. DOUGLAS COUNTY, OREGON
 WALKER CREEK SURVEY SCALE 1" = 400' . DATE: FEB 1993



LEGEND:

- ⊙ - FOUND MONUMENT
 - - PROJECTED LINES
 - - LINES FLAGGED, BLAZED & TAGGED
 - () - WILFORD HAINES RECORD SURVEY FILED IN DOUGLAS COUNTY SURVEYORS OFFICE #M26-80
- FILED *JH*
 MAR 4 1993
 COUNTY SURVEYOR DOUGLAS COUNTY, ORE.
 SUBMITTED FOR CORNER INFORMATION ONLY.

NARRATIVE

THIS SURVEY WAS CONDUCTED TO ESTABLISH PROPERTY LINES FOR TIMBER CUTTING PURPOSES. NO CORNERS WERE SET. THIS SURVEY IS DEPENDENT UPON SURVEY BY WILFORD HAINES FILED IN DOUGLAS COUNTY SURVEY RECORDS #26-80. WE INITIATED THE SURVEY AT HAINES T-BAR FOR THE SOUTH 1/16 BETWEEN SECTIONS 12 AND 7, TRAVERSING TO A COUNTY BCIP FOR THE SE SECTION CORNER OF SECTION 12. WE THEN CONTINUED TRAVERSING TO HAINES T-BARS AT THE E 1/16 BETWEEN SECTIONS 12 AND 13 AND THE SE 1/16 OF SECTION 12 BLAZING LINE BETWEEN CORNERS. SURVEY WAS DONE WITH A LEITZ SET 2 TOTAL STATION WITH GARY ANGIOLET AND PAT KELLY ASSISTING ME.

CORNER INFORMATION

- (1) T23S R4W E 1/16 BETWEEN SECTION 12 AND 13
 FOUND HAINES T-BAR 0.6 FEET ABOVE GROUND ON STEEP NORTH FACING SLOPE 50 FEET SOUTH OF SWALE DRAW. HAINES DID NOT SCRIBE ANY BEARING TREES FOR THIS CORNER.
 - 15° DOUG FIR BEARS S88°W, 22.4 FEET, I TAG, PAINT AND SCRIBE E 1/16 S13 BT.
 - 23° HEMLOCK (SCHOOL MARM) BEARS N79°E, 25.8 FEET, I TAG, PAINT AND SCRIBE E 1/16 S12 BT.
 - 27° GRAND FIR BEARS N8°W, 68.4 FEET WITH HAINES TAG BUT NO FACE OR SCRIBING.
- (2) T23S R4W SECTION 12 SE 1/16
 FOUND HAINES T-BAR 0.5 FEET ABOVE GROUND ON SOUTH SIDE OF FLAT SPUR RIDGE BEARING EAST AND WEST. HAINES DID NOT SCRIBE ANY BEARING TREES FOR THIS CORNER.
 - 9° DOUG FIR BEARS S36°E, 4.0 FEET, I TAG, PAINT, AND SCRIBE SE 1/16 S12 BT.
 - 11° DOUG FIR BEARS N35°W, 8.4 FEET, I TAG, PAINT, AND SCRIBE SE 1/16 S12 BT.
- (3) S 1/16 BETWEEN T23S R4W SECTION 12 AND T23S R3W SECTION 7
 FOUND HAINES T-IRON BENT OVER, WE STRAIGHTENED, CORNER LIES UNDER POWERLINE APPROXIMATELY 250 FEET WEST OF GRAVEL ROAD. WEYCO CLEARCUT TO SOUTHEAST.
 - FOUND A 50° DOUG FIR STUMP BEARING N4°W, 19.1 FEET TO WEYCO TAG IN FACE.
 - FOUND 36° HIGH DOUG FIR STUMP BEARING S8°W, 17.3 FEET TO WEYCO TAG IN FACE.
- (4) T23S R4W SESC OF SECTION 12
 FOUND A 2° DOUGLAS COUNTY SURVEYORS OFFICE BRASS CAP 1.0 FEET ABOVE GROUND, CORNER LIES IN GROVE OF APPROXIMATELY 20 YEAR OLD TREES APPROXIMATELY 65 FEET SOUTHEAST OF CREEK.
 - FOUND A 50° DOUG FIR STUMP BEARING N61°E, 12.0 FEET TO WEYCO TAG.
 - FOUND A 46° CEDAR STUMP BEARING S 54°E, 6.6 FEET TO WEYCO TAG.
 - FOUND A 48° DOUG FIR LOW STUMP BEARING N5°E, 51.8 FEET TO WEYCO TAG.