

M 116-29  
See M154-40  
for new MAP & corner

FILED JP

OREGON CORNER RESTORATION FORM

JAN 12 1993

Section 25 Township 22S Range 6W

COUNTY SURVEYOR  
DOUGLAS COUNTY, ORE

County DOUGLAS Date 7 DEC '92

Corner Designation

C.E. 1/16 COR SEC 25

- Condition Report Only
- Not Found
- Renewed
- Unrecorded
- Surveyed In
- Referenced Out

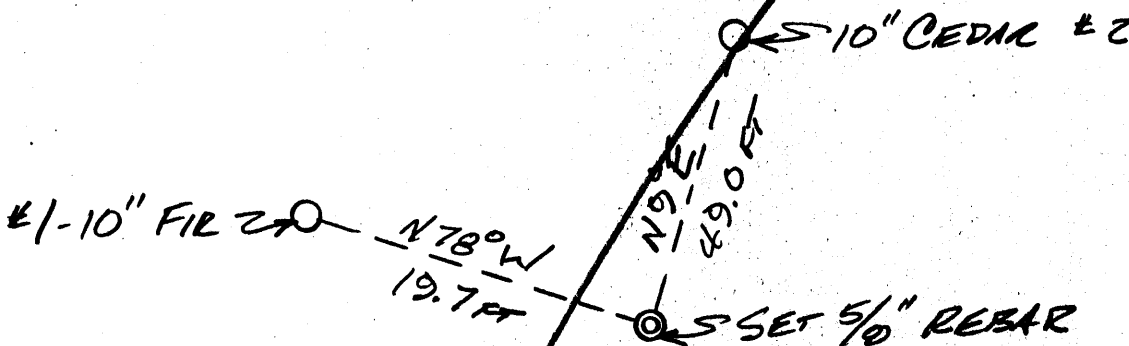
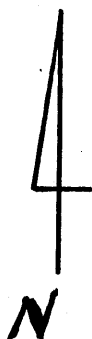
Previous Renewals/Surveys, etc. NONE

Monument(s) & Accessories Found: (Condition and Source)

NONE

Monument Detail

Sketch



Monument Set (Procedures and Description)

SET 5/8" X 30" REBAR WITH YELLOW PLASTIC CAP MARKED "BRANCH ENG LS 1138". CORNER WAS SET ON LINE AT THE MIDPOINT BETWEEN THE CENTER 1/4 CORNER AND THE EAST 1/4 CORNER OF SECTION 25.

New Accessories

- #1) A 10" FIR BEARS N78°W 19.7 FT SCRIBED CE 1/16 S25BT WITH PK NAIL & BRASS WASHER "LS 1138"
- #2) A 10" CEDAR BEARS N9°E 49.0 FT SCRIBED CE 1/16 S25BT WITH PK NAIL & BRASS WASHER "LS 1138"

Location & Comments

Compass Declination \_\_\_\_\_  
 Firm/Agency BRANCH ENGINEERING  
 Address 212 Q ST  
SPRINGFIELD, OR  
 Party Chief G. HOFFMAN  
 Notes \_\_\_\_\_  
 Witness T. MONTGOMERY

Surveyor's Seal

REGISTERED  
PROFESSIONAL  
LAND SURVEYOR

*J. A. Branch*

OREGON  
SEPT. 23, 1977  
JAMES A. BRANCH  
1138

M 116-29  
See M 154-40 for  
Revised map

FILED *J*

OREGON CORNER RESTORATION FORM

Section 25 Township 22S Range 6W

JAN 12 1993

County DOUGLAS Date 2 Dec '92

COUNTY SURVEYOR  
DOUGLAS COUNTY, ORE.

Corner Designation

SECTION CORNER SECS 24 & 25 T22S, R6W &  
SECS 19 & 30 T22S, R5W

- Condition Report Only
- Not Found
- Renewed
- Unrecorded
- Surveyed In
- Referenced Out

Previous Renewals/Surveys, etc. \_\_\_\_\_

M100-25 BLOOM 1986

Monument(s) & Accessories Found: (Condition and Source)

FND 2 1/2" BRASS CAP "COUNTY SURVEYORS OFFICE 1959"

ORIG 10", NOW 20" B. OAK SW 1/4 N 4 1/2° W 47.5 FT - FND BADLY ROTTED STUMP

ORIG 20", NOW 44" + W. OAK N 89° E 47.5 FT - FND OK

ORIG 20", NOW 26" W. OAK PREVIOUSLY OPENED S 74° E 32.3 FT NOW DEAD

ORIG 14" NOW 30" + W. OAK S 60° W 66 FT FND OK

8" W OAK N 37° W 8.7 FT FND OK

~~Monument Detail~~

Sketch

12" R. FIR S 57° E 55.7 FT FND OK.

Monument Set (Procedures and Description)

NONE

New Accessories

NONE

Location & Comments

Compass Declination \_\_\_\_\_

Firm/Agency BRANCH

ENGINEERING

Address 212 Q ST

SPRINGFIELD, OR

Party Chief G. HOFFMAN

Notes \_\_\_\_\_

Witness T. MONTGOMERY

Surveyor's Seal

REGISTERED  
PROFESSIONAL  
LAND SURVEYOR

*James A. Branch*

OREGON  
SEPT. 23, 1977  
JAMES A. BRANCH  
1138

M 116-29  
Sec M 154-40 Cor  
renewed map

FILED JP

OREGON CORNER RESTORATION FORM

JAN 12 1993

Section 25 Township 22S Range 6W

COUNTY SURVEYOR  
DOUGLAS COUNTY, ORE.

County DOUGLAS Date 2 Dec '92

Corner Designation

SECTION CORNER 25 & 36, T22S, R6W &  
SECTION 30 & 31 T22S, R5W

- Condition Report Only
- Not Found
- Renewed
- Unrecorded
- Surveyed In
- Referenced Out

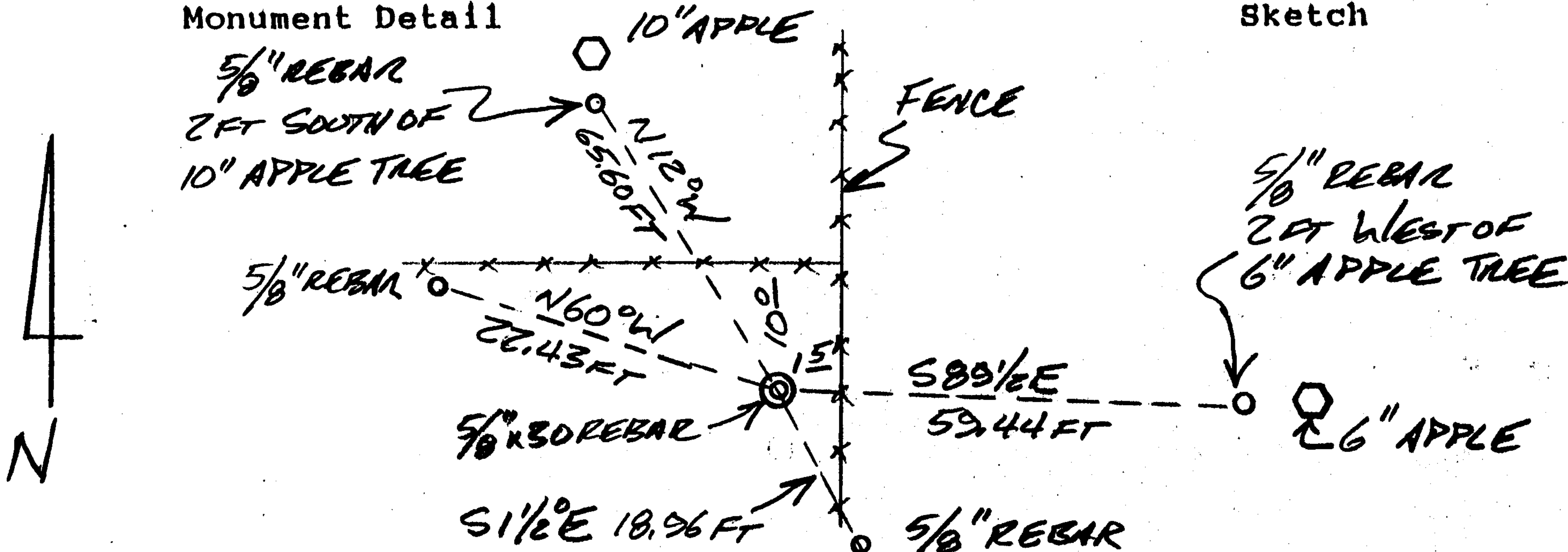
Previous Renewals/Surveys, etc. Orig

Monument(s) & Accessories Found: (Condition and Source)

NONE.

Monument Detail

Sketch



Monument Set (Procedures and Description)

SET  $\frac{5}{8}$ " X 30" REBAR WITH YELLOW PLASTIC CAP MARKED "BRANCH ENG LS1138". CORNER WAS SET ON LINE AT PROPORTIONED DISTANCE BETWEEN THE  $\frac{1}{4}$  COR FOR SECTIONS 36 & 31 AND THE SECTION CORNER FOR SECTIONS 24, 25, 19 & 30

New Accessories

SET (4)  $\frac{5}{8}$ " X 30" REBARS EACH WITH A RED PLASTIC CAP MARKED "REF MON LS1138"  
1) N60°W 22.43 FEET, 2) S 1 1/2° E 18.96 FEET  
3) S89 1/2° E 59.44 FEET, 4) N 12°W 65.60 FEET

Location & Comments

CORNER IS APPROX  
10 FT SOUTH OF  
E-W FENCE &  
1.5 FT WEST OF  
N-S FENCE

Compass Declination \_\_\_\_\_  
Firm/Agency BRANCH ENGINEERING  
Address 212 Q ST  
SPRINGFIELD, OR  
Party Chief G. HOFFMAN  
Notes \_\_\_\_\_  
Witness T. MONTGOMERY

Surveyor's Seal

REGISTERED  
PROFESSIONAL  
LAND SURVEYOR

*James A. Branch*

OREGON  
SEPT. 23, 1977  
JAMES A. BRANCH  
1138

M 116-29

See M154-40 for revised map & corner

FILED JP

OREGON CORNER RESTORATION FORM

Section 25 Township 22S Range 6W

JAN 12 1993

County DOUGLAS Date 2 DEC '90

COUNTY SURVEYOR DOUGLAS COUNTY, ORE.

Corner Designation

E 1/16 CORNER SECS. 24 & 25

- Condition Report Only
- Not Found
- Renewed
- Unrecorded
- Surveyed In
- Referenced Out

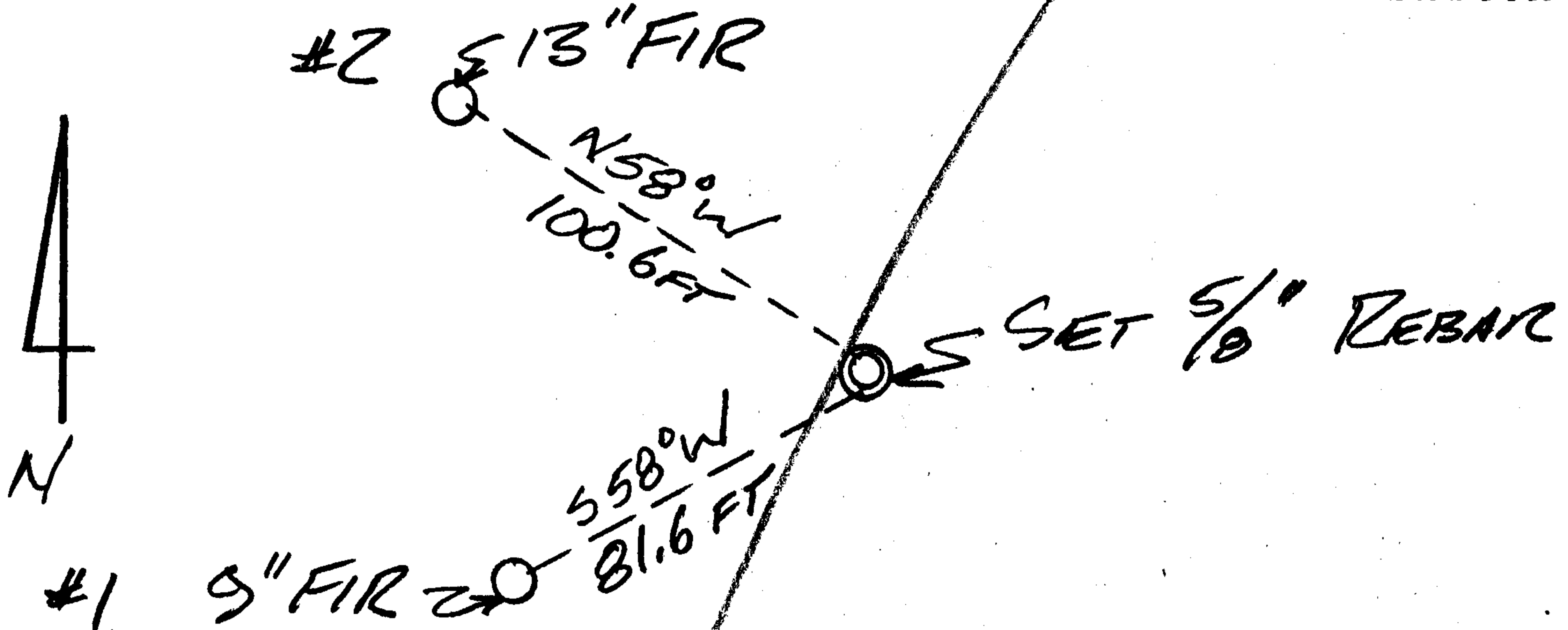
Previous Renewals/Surveys, etc. NONE

Monument(s) & Accessories Found: (Condition and Source)

NONE

Monument Detail

Sketch



Monument Set (Procedures and Description)

SET 5/8" X 30" REBAR WITH YELLOW PLASTIC CAP MARKED. "BRANCH ENG LS 1138". CORNER WAS SET ON LINE AT MIDPOINT BETWEEN 1/4 COR SEC. 24 & 25 AND SECTION CORNER SECS. 24, 25, 19 & 30

New Accessories

- #1) A 9" FIR BEARS 558°W 81.6 FT. SCRIBED: E 1/16 S 25 BT WITH PK NAIL & BRASS WASHER "LS 1138"
- #2) A 13" FIR BEARS N58°W 100.6 FT. SCRIBED: E 1/16 S 24 BT WITH PK NAIL & BRASS WASHER "LS 1138"

Location & Comments

Surveyor's Seal

Compass Declination \_\_\_\_\_  
 Firm/Agency BRANCH ENGINEERING  
 Address 212 Q ST SPRINGFIELD, OR  
 Party Chief G. HOFFMAN  
 Notes \_\_\_\_\_  
 Witness T. MONTGOMERY

REGISTERED PROFESSIONAL LAND SURVEYOR

JAMES A. BRANCH  
 OREGON SEPT. 23, 1977  
 JAMES A. BRANCH 1138

M 116-29

see M 154-40 for revised map  
& corner

FILED JP

OREGON CORNER RESTORATION FORM

JAN 12 1993

Section 25 Township 22S Range 6W  
County DOUGLAS Date 2 DEC 92

COUNTY SURVEYOR  
DOUGLAS COUNTY, ORE.

Corner Designation

CENTER-WEST 1/16 COR. SEC. 25

- Condition Report Only
- Not Found
- Renewed
- Unrecorded
- Surveyed In
- Referenced Out

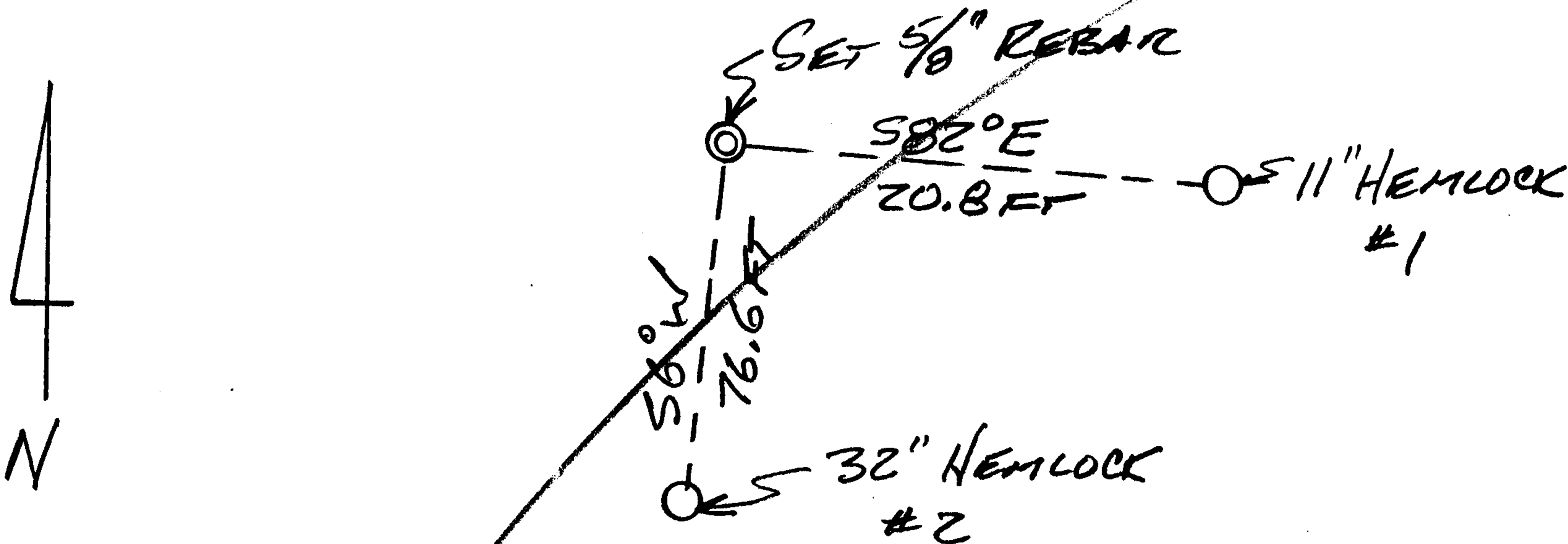
Previous Renewals/Surveys, etc. NONE

Monument(s) & Accessories Found: (Condition and Source)

NONE

Monument Detail

Sketch



Monument Set (Procedures and Description)

SET 5/8" x 30" REBAR WITH YELLOW PLASTIC CAP MARKED  
'BRANCH ENG LS 1138". CORNER WAS SET ON LINE  
AT THE MIDPOINT BETWEEN THE COMPUTED WEST  
1/4 COR AND THE CENTER 1/4 CORNER OF SECTION  
25.

New Accessories

- #1) AN 11" HEMLOCK BEARS S82°E 20.8 FT SCRIBED  
C.W 1/16 S25 BT WITH PK NAIL & BRASS WASHER "LS 1138".
- #2) A 32" HEMLOCK BEARS S6°W 76.6 FT SCRIBED  
ON 1/16 S25 BT WITH PK NAIL & BRASS WASHER "LS 1138".

Location & Comments

Surveyor's Seal

Compass Declination \_\_\_\_\_  
 Firm/Agency BRANCH  
ENGINEERING  
 Address 212 Q ST  
SPRINGFIELD, OR  
 Party Chief G. HOFFMAN  
 Notes \_\_\_\_\_  
 Witness T. MONTGOMERY

REGISTERED  
PROFESSIONAL  
LAND SURVEYOR

James A. Branch  
OREGON  
SEPT. 23, 1977  
JAMES A. BRANCH  
1138

M 116-29  
See M154-40 for revised map  
d. corner

FILED JP

OREGON CORNER RESTORATION FORM

JAN 12 1993

Section 25 Township 22S Range 6W

County DOUGLAS Date 2 DEC 92

COUNTY SURVEYOR  
DOUGLAS COUNTY, ORE.

Corner Designation

S.W. 1/16 Corner Section 25

- Condition Report Only
- Not Found
- Renewed
- Unrecorded
- Surveyed In
- Referenced Out

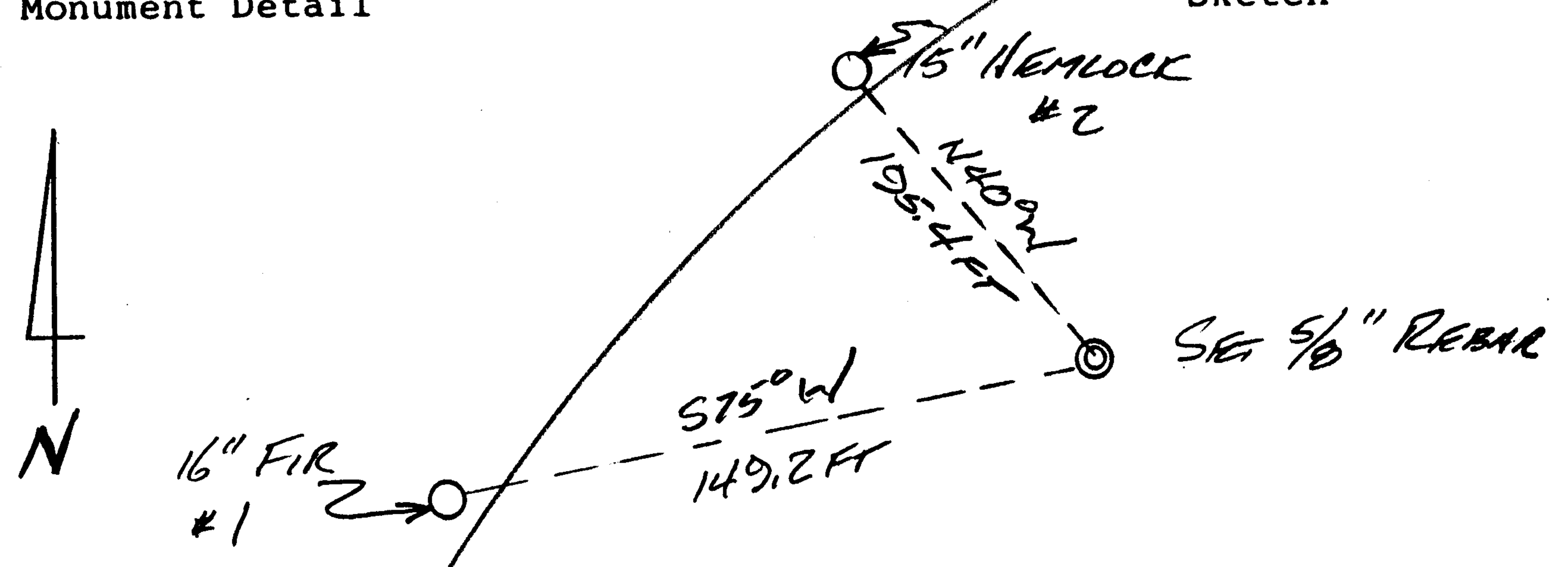
Previous Renewals/Surveys, etc. NONE

Monument(s) & Accessories Found: (Condition and Source)

NONE

Monument Detail

Sketch



Monument Set (Procedures and Description)

SET 5/8" x 30" REBAR WITH YELLOW PLASTIC CAP MARKED "BRANCH ENG LS 1138". CORNER WAS SET AT THE INTERSECTION OF THE LINES BETWEEN THE C.W. 1/16 COR AND THE COMPUTED POSITION OF THE W. 1/16 25-36, AND BETWEEN THE S. 1/16 25-26 AND THE COMPUTED POSITION OF SECTION 25.

New Accessories

#1) A 16" FIR BEARS S75°W 149.2 FT SCUBED SW 1/16 S25BT WITH PK NAIL & BRASS WASHER "LS 1138".

#2) A 15" HEMLOCK BEARS N40°W 195.4 FT SCUBED SW 1/16 S25BT WITH PK NAIL & BRASS WASHER "LS 1138".

Location & Comments

Surveyor's Seal

Compass Declination \_\_\_\_\_  
 Firm/Agency BRANCH ENGINEERING  
 Address 212 Q ST  
SPRINGFIELD, OR  
 Party Chief G. HOFFMAN  
 Notes \_\_\_\_\_  
 Witness T. MONTGOMERY

REGISTERED PROFESSIONAL LAND SURVEYOR

JAMES A. BRANCH  
OREGON SEPT. 23, 1977  
1138

M 116-29  
See M154-40 for revised map

FILED JP

OREGON CORNER RESTORATION FORM

JAN 12 1993

Section 25 Township 22S Range 6W

COUNTY SURVEYOR  
DOUGLAS COUNTY, ORE.

County DOUGLAS Date 2 DEC '92

Corner Designation

1/4 CORNER SECTIONS 25 & 36

- Condition Report Only
- Not Found
- Renewed
- Unrecorded
- Surveyed In
- Referenced Out

Previous Renewals/Surveys, etc. # 55 & 158

Monument(s) & Accessories Found: (Condition and Source)

FND 2 1/2" BRASS CAP - (SEE DETAIL BELOW) ON 2" PIPE

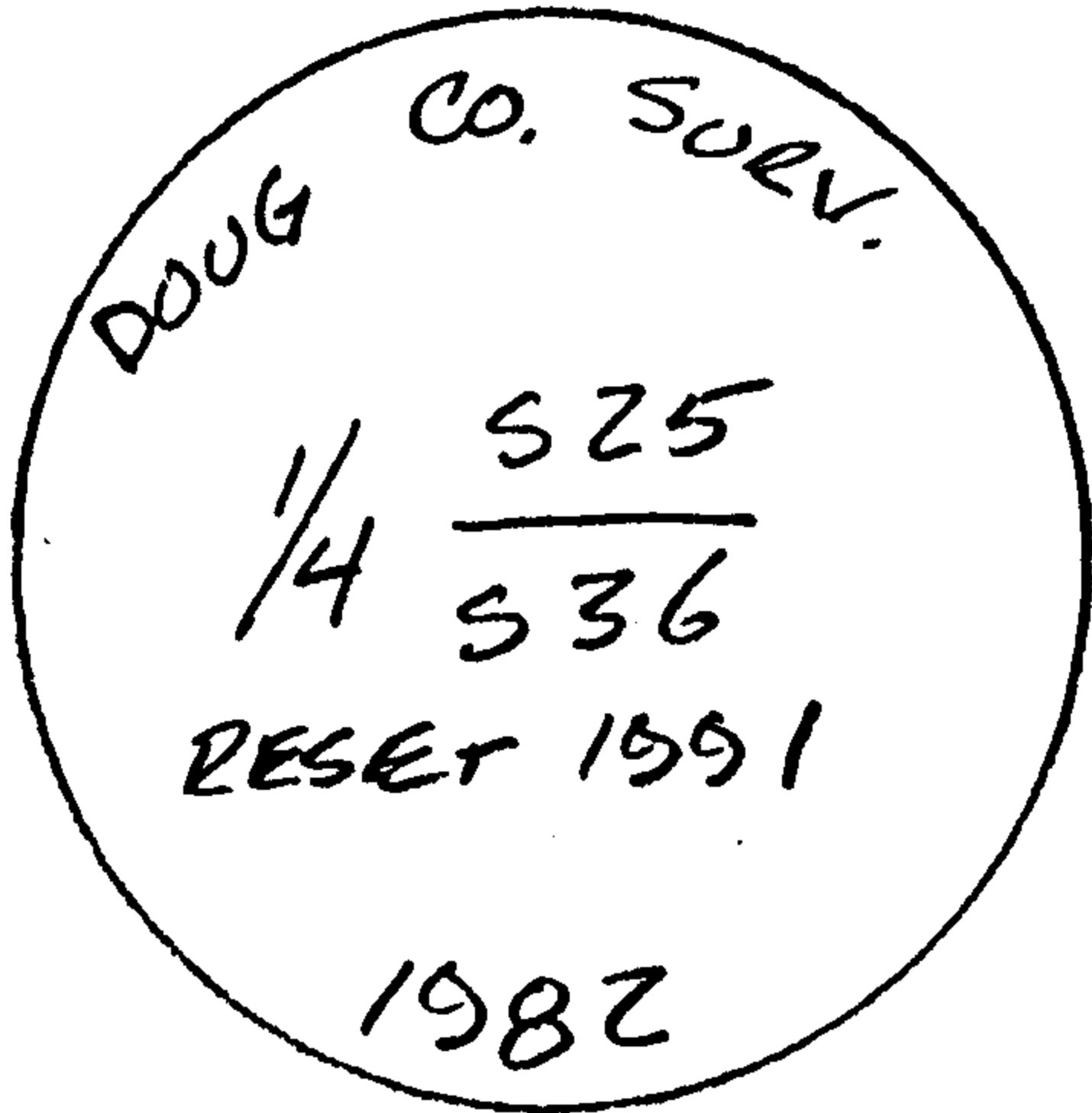
BT - 41" B. OAK BEAMS S20E 223.3 FT

BT - 31" B. OAK BEAMS N81 1/2 E 218.8 FT

BT - 49" CEDAR BEAMS S56 1/2 E 222.6 FT

Monument Detail

Sketch



Monument Set (Procedures and Description)

NONE

New Accessories

NONE

Location & Comments

Surveyor's Seal

Compass Declination \_\_\_\_\_

Firm/Agency BRANCH

ENGINEERING

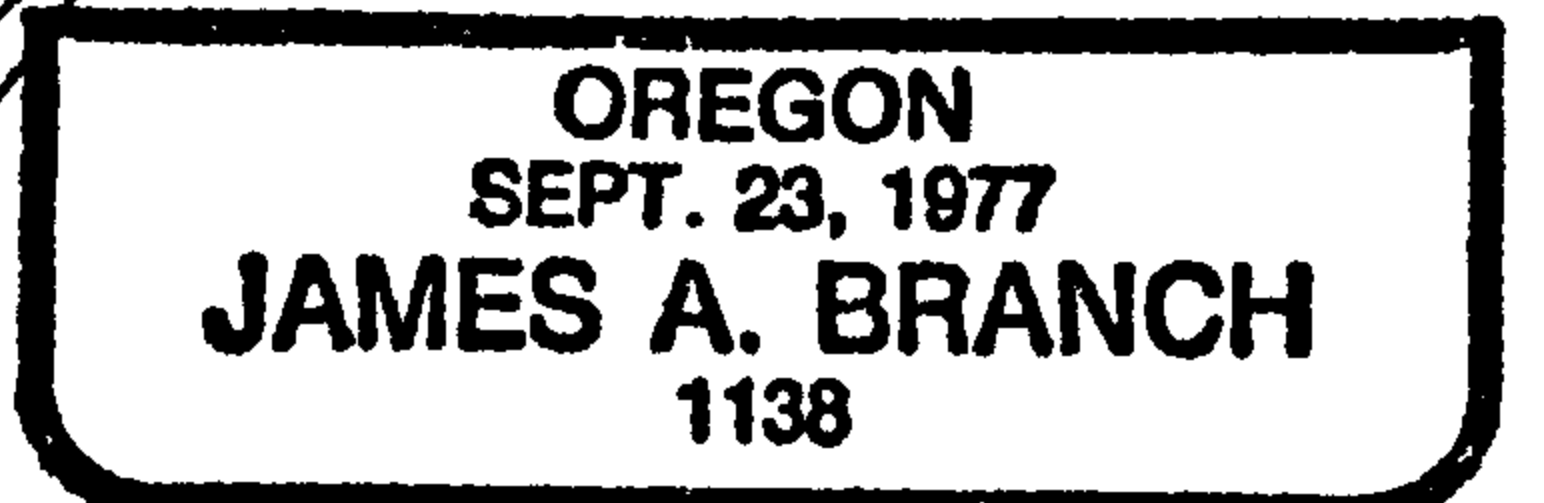
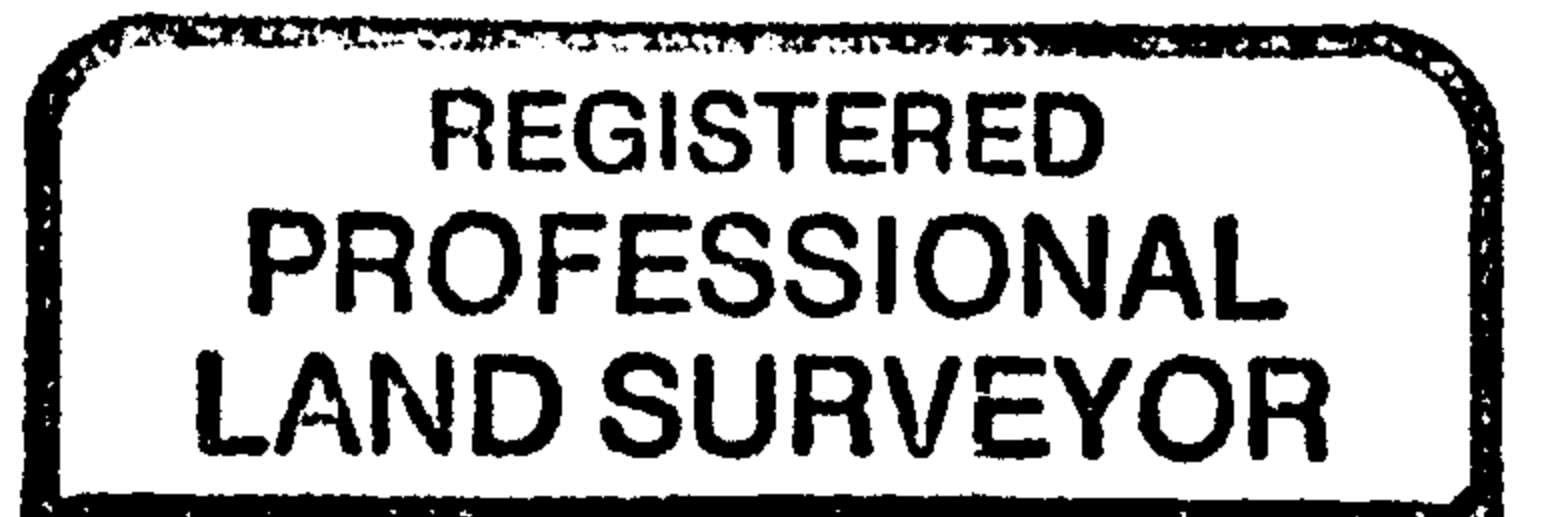
Address 212 Q ST

SPRINGFIELD, OR

Party Chief G. HOFFMAN

Notes \_\_\_\_\_

Witness T. MONTGOMERY



M 116-29  
See M 154-40 for revised map FILED JP

OREGON CORNER RESTORATION FORM

JAN 12 1993

Section 25 Township 22S Range 6W

COUNTY SURVEYOR  
DOUGLAS COUNTY, OREGON

County DOUGLAS Date 2 DEC '92

Corner Designation

1/4 CORNER SEC 25, T22S, R6W &  
SEC 30, T22S, R5W

- Condition Report Only
- Not Found
- Renewed
- Unrecorded
- Surveyed In
- Referenced Out

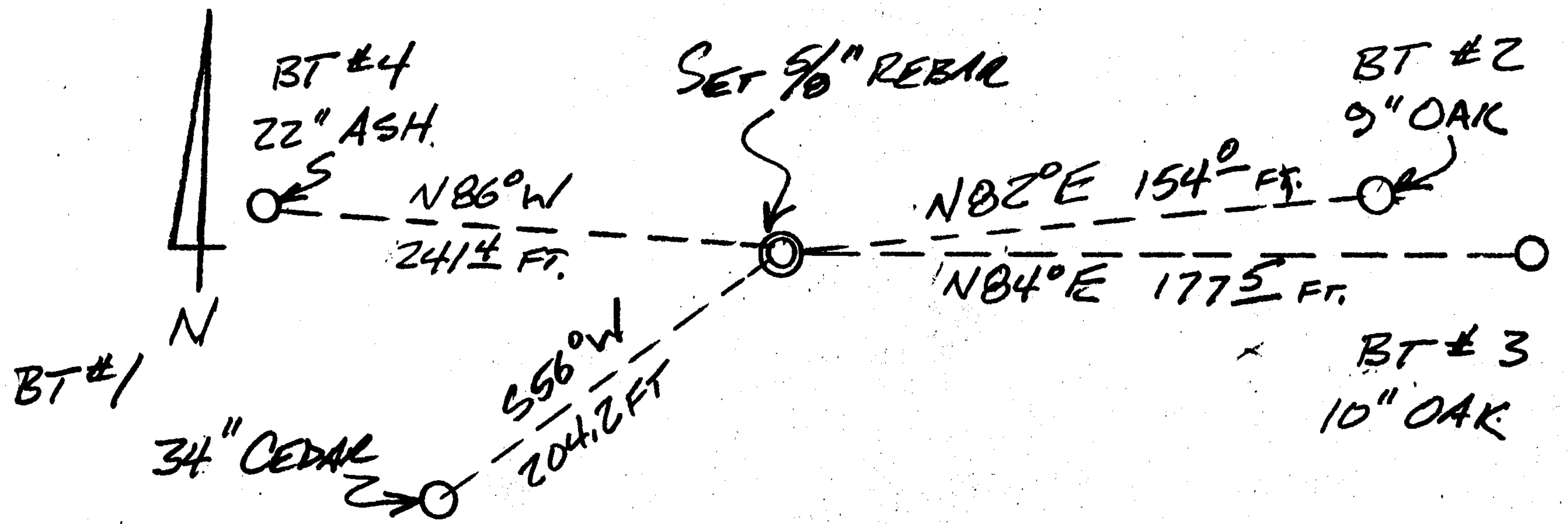
Previous Renewals/Surveys, etc. Orig

Monument(s) & Accessories Found: (Condition and Source)

NONE

Monument Detail

Sketch



Monument Set (Procedures and Description)

SET 5/8" X 30" REBAR WITH YELLOW PLASTIC CAP MARKED "BRANCH ENG LS 1138". CORNER WAS SET ON LINE AT PROPORTIONED DISTANCE BETWEEN THE 1/4 CORNER FOR SECTIONS 36 & 31 AND THE SECTION CORNER FOR SECTIONS 24, 25, 19 & 30

New Accessories

- 1) 34" CEDAR BEARS S56°W 204.2 FEET SCRIBED; "1/4 S 25 BT" WITH PK NAIL & BRASS WASHER "LS 1138"
- 2) 9" OAK BEARS NB2°E 154.0 FEET SCRIBED; "1/4 S 30 BT" WITH PK NAIL & BRASS WASHER "LS 1138"

Location & Comments

SEE REVERSE FOR MORE BT DESCRIPTIONS.

Compass Declination \_\_\_\_\_  
 Firm/Agency BRANCH ENGINEERING  
 Address 212 Q ST SPRINGFIELD, OR  
 Party Chief G. HOFFMAN  
 Notes \_\_\_\_\_  
 Witness T. MONTGOMERY

Surveyor's Seal

REGISTERED PROFESSIONAL LAND SURVEYOR

*James A. Branch*

OREGON  
SEPT. 23, 1977  
JAMES A. BRANCH  
1138

NEW ACCESSORIES CONT.

- 3) A 10" OAK BEAMS NB4°E 177<sup>5</sup> FEET SCRIBED: "1/4 S30BT"  
WITH PK NAIL & BRASS WASHER "LS1138".
  
- 4) A 22" ASH BEAMS NB6°W 241<sup>4</sup> FEET SCRIBED: "1/4 S25BT"  
WITH PK NAIL & BRASS WASHER "LS1138."

M 116-29  
See M 154-40 for revised map  
Corner

FILED JP

OREGON CORNER RESTORATION FORM

JAN 12 1993

Section 25 Township 22S Range 6W

County DOUGLAS Date 2 DEC '93 COUNTY SURVEYOR  
DOUGLAS COUNTY, ORE.

Corner Designation

CENTER 1/4 COR. SEC. 25

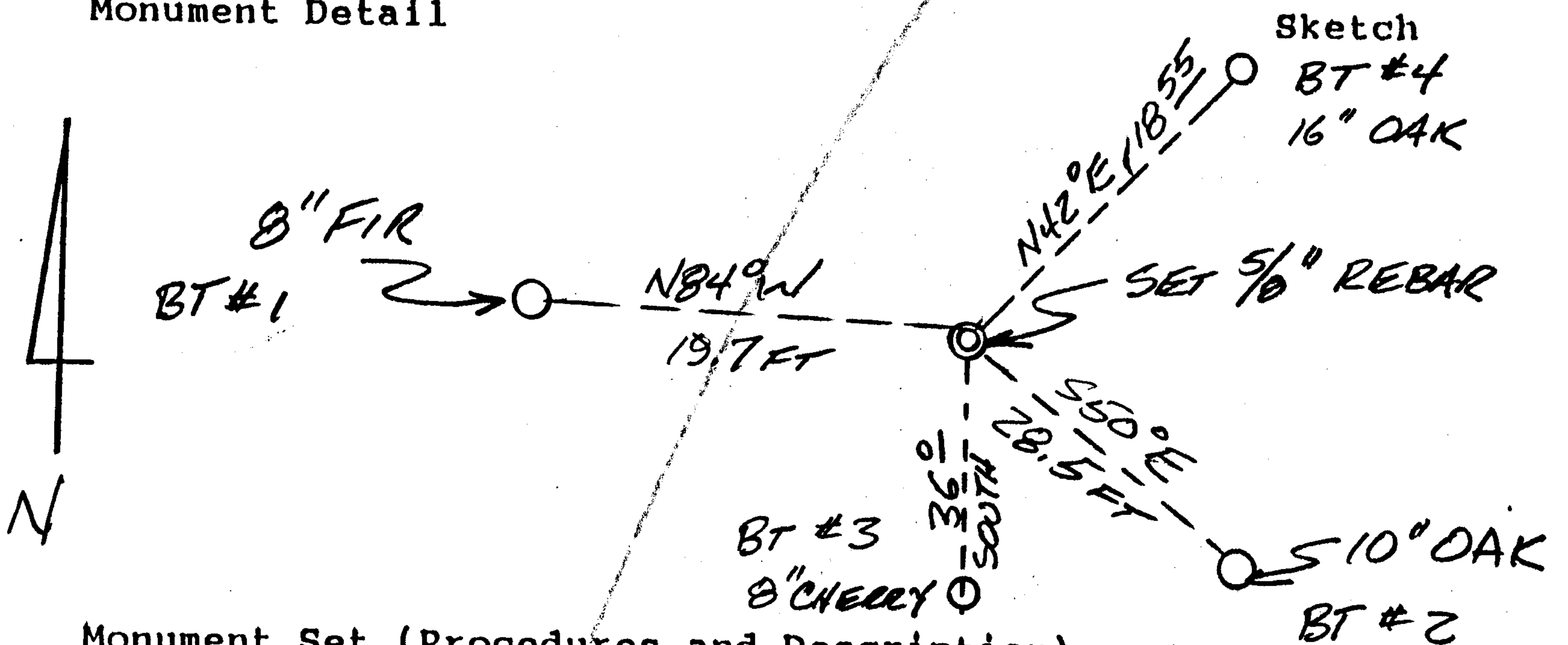
- Condition Report Only
- Not Found
- Renewed
- Unrecorded
- Surveyed In
- Referenced Out

Previous Renewals/Surveys, etc. NONE

Monument(s) & Accessories Found: (Condition and Source)

NONE

Monument Detail



Monument Set (Procedures and Description)

SET 5/8" X 30" REBAR WITH YELLOW PLASTIC CAP MARKED "BRANCH ENG LS 1138". CORNER WAS SET AT THE INTERSECTION OF LINES BETWEEN THE NORTH & SOUTH 1/4 CORNERS; AND THE COMPUTED POSITION OF THE WEST 1/4 COR & EAST 1/4 COR OF SEC 25

New Accessories

- #1) AN 8" FIR BEARS N84°W 19.7 FT SCRIBED C/4 S 25 BT WITH PK NAIL & BRASS WASHER "LS 1138".
- #2) A 10" OAK BEARS S50°E 28.5 FT SCRIBED C/4 S 25 BT WITH PK NAIL & BRASS WASHER "LS 1138".

Location & Comments

SEE REVERSE FOR MORE B.T. DESCRIPTIONS.

Compass Declination

Firm/Agency BRANCH ENGINEERING

Address 212 Q ST. SPRINGFIELD, OR

Party Chief G. HOFFMAN

Notes

Witness T. MONTGOMERY

Surveyor's Seal

REGISTERED PROFESSIONAL LAND SURVEYOR

JA A. Buel  
OREGON  
SEPT. 23, 1977  
JAMES A. BRANCH  
1138

NEW ACCESSORIES CONT.

- 3) AN 8" CHESTNUT BEARS SOUTH  $36^{\circ}$  FEET SCRIBED: "C'1/4S25BT"  
WITH PK NAIL & BRASS WASHER "LS1138."
- 4) A 16" OAK BEARS N  $42^{\circ}$  E  $18^{\underline{55}}$  FEET SCRIBED: "C'1/4S25BT"  
WITH PK NAIL & BRASS WASHER "LS1138."

M 116-29  
See M 154-40 for revised map  
corner  
FILED JP

OREGON CORNER RESTORATION FORM

Section 25 Township 22S Range 6W JAN 12 1993

County DOUGLAS Date 2 DEC 93 COUNTY SURVEYOR  
DOUGLAS COUNTY, ORE.

Corner Designation

1/4 CORNER SECS. 24 & 25

- Condition Report Only
- Not Found
- Renewed
- Unrecorded
- Surveyed In
- Referenced Out

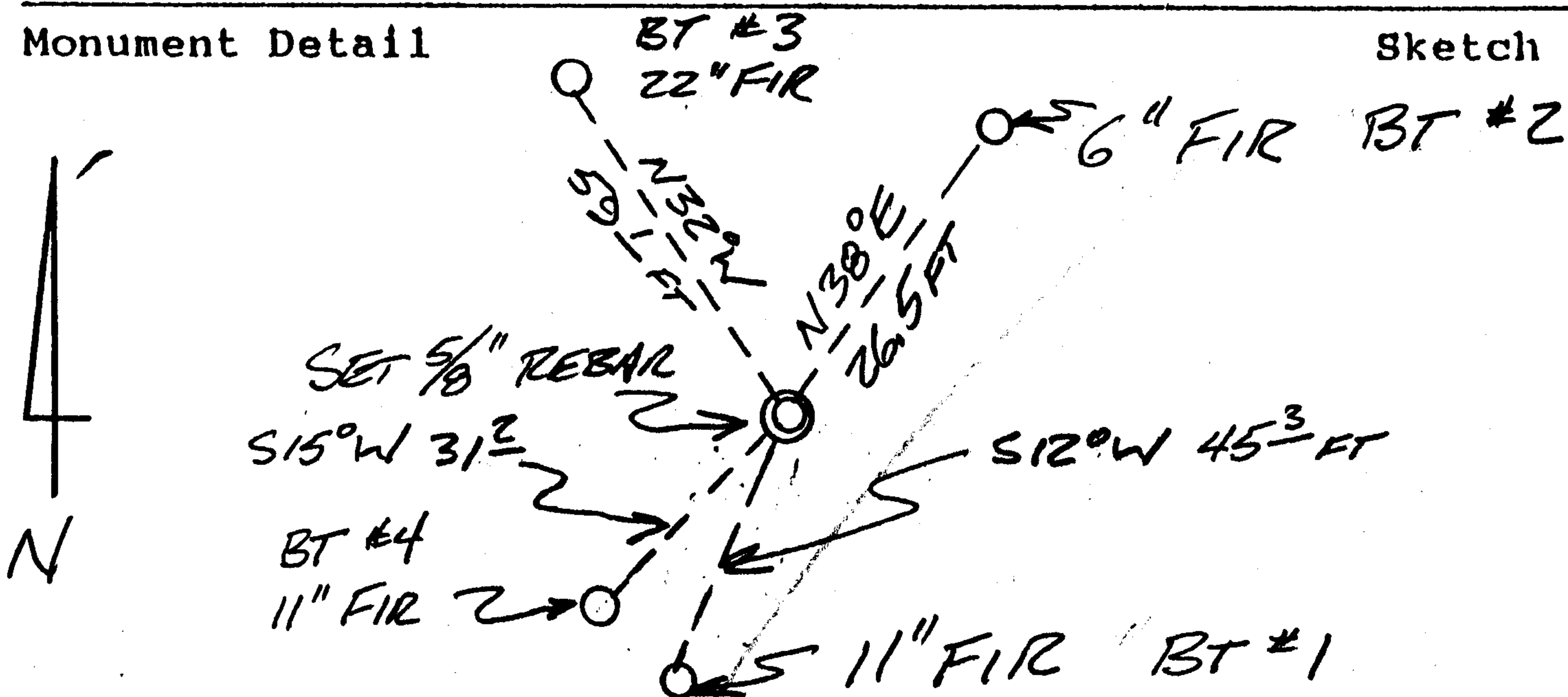
Previous Renewals/Surveys, etc. Orig.

Monument(s) & Accessories Found: (Condition and Source)

NONE

Monument Detail

Sketch



Monument Set (Procedures and Description)

SET 5/8" X 30" REBAR WITH YELLOW PLASTIC CAP MARKED  
"BRANCH ENG LS 1138". CORNER WAS SET ON LINE  
A PROPORTIONED DISTANCE (MIDPOINT) BETWEEN  
THE NW AND NE SECTION CORNERS OF  
SECTION 25.

New Accessories

#1) AN 11" FIR BEARS S12°W 45.3 FEET SCRIBED! 1/4 S25 BT  
WITH PK NAIL & BRASS WASHER "LS 1138"

#2 A 6" FIR BEARS N38°E 26.5 FEET SCRIBED! 1/4 S24 BT  
WITH PK NAIL & BRASS WASHER "LS 1138"

Location & Comments

SEE REVERSE  
FOR MORE B.T.  
DESCRIPTIONS

Compass Declination \_\_\_\_\_  
Firm/Agency BRANCH  
ENGINEERING  
Address 212 Q ST  
SPRINGFIELD, OR  
Party Chief G. NOFFMAN  
Notes \_\_\_\_\_  
Witness T. MONTGOMERY

Surveyor's Seal

REGISTERED  
PROFESSIONAL  
LAND SURVEYOR

James A. Branch  
OREGON  
SEPT. 23, 1977  
JAMES A. BRANCH  
1138

NEW ACCESSORIES CONT.

- 3) A 22" FIR BEARS N32°W 59.1 FEET SCRIBED: "1/4 S24 BT"  
WITH PK NAIL & BRASS WASHER "LS1138."
- 4) AN 11" FIR BEARS S15°W 31.2 FEET SCRIBED: "1/4 S25 BT"  
WITH PK NAIL & BRASS WASHER "LS1138."