

REGISTERED  
PROFESSIONAL  
LAND SURVEYOR

*Steven P. Ness*

OREGON  
JULY 14, 1967  
STEVEN P. NESS  
811

SURVEY FOR  
**SPRINGFIELD FOREST PRODUCTS**

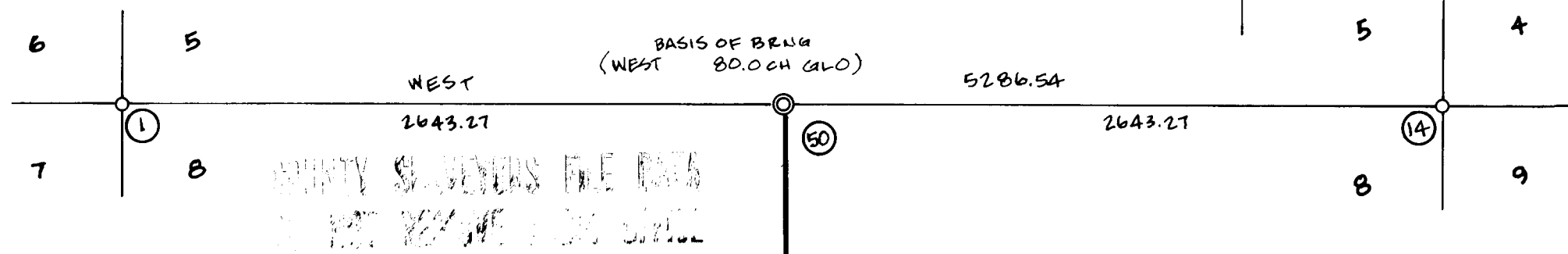
IN  
N 1/2, SEC. 8, T. 23 S., R. 4 W., W.M.  
DOUGLAS COUNTY, OREGON

SCALE: 1" = 600'

AUGUST 12, 1992



*JP*  
*JP*



NARRATIVE

THIS SURVEY WAS PERFORMED TO MARK THE LINE AS SHOWN. THE NORTHEAST AND NORTHWEST CORNERS OF SECTION 8 WERE TIED AND THE PROPORTIONED POSITION FOR THE NORTH 1/4 CORNER WAS FOUND. THIS POSITION FIT IN AN OLD EAST-WEST FENCE LINE ABOUT 7 FEET EAST OF THE OF THE CORNER WHERE THE FENCE GOES SOUTH. THIS IS ASSUMED TO BE THE SAME CORNER REFERED TO BY HAINES IN HIS SURVEY NUMBER M 26-38. HAINES USED THIS FENCE CORNER AS THE POSITION FOR THE NORTH 1/4 CORNER TO SET THE CENTER 1/4 CORNER. WE USED THE PROPORTIONED NORTH 1/4 POSITION AND HAINES' CENTER 1/4 CORNER, AT THE DIRECTION OF OUR CLIENT, TO FORM THE MARKED LINE.

LEGEND

- MONUMENT SET
- MONUMENT FOUND
- LINE BLAZED
- CORNER NUMBER
- RECORD DATA

CORNER DATA

- ① NORTHWEST CORNER  
FOUND: 2 1/2" POSO BRASS CAP ON 1/4" I. POST, TOP 10" HIGH.  
12" W.R. CEDAR, S 6° 31' E 35.4, FACE ALMOST HEALED, SCRIBING VIS.  
28" W.R. CEDAR, S 9° 38' E 11.7, FACES HEALED.  
20" W.R. CEDAR, N 40° 27' E 10.5, FACES NOT YET HEALED, SCRIBING VIS.  
25" W.R. CEDAR, N 70° 07' W 10.9, FACES ALMOST HEALED, SCRIBING VIS.  
12" G. FIR, S 86° 11' W 66.5, FACE HEALED.  
1" T. IRON, 0.3 SOUTH
- ⑤① NORTH 1/4 CORNER  
SET: 5/8" X 30" I. ROD W/ Y. PLASTIC CAP, "STEVEN P. NESS RPLS 811"  
SCRIBED: 13" D. FIR, S 69° 05' E 14.6, "1/4 S S BT"  
15" D. FIR, S 24° 12' E 10.7, "1/4 S S BT"  
11" D. FIR, N 61° 12' W 25.3, "1/4 S S BT"  
15" D. FIR, N 26° 23' W 28.0, "1/4 S S BT"
- ⑭④ NORTHEAST CORNER  
FOUND: 2 1/2" POSO BRASS CAP ON 1/4" I. POST TOP 14" HIGH  
14" W. OAK, N 12° 03' W 69.1, FACE HEALED.  
25" W. OAK, N 49° 39' E 38.2, FACE HEALED.  
31" W. OAK, S 18° 56' E 89.9, FACE HEALED.  
21" W. OAK, S 34° 51' W 53.0, FACE HEALED.
- ③⑨ CENTER 1/4 CORNER  
FOUND: 1" T. IRON, TOP 10" HIGH  
31" W.R. CEDAR, N 82° 25' E 11.9, FACES HEALED, NO RECORD.  
NO SEARCH MADE FOR 14" D. FIR S 4° W 36.4 (IN OLD LOGGING)

LEAVITT, NESS & CO  
P. O. BOX 298  
SPRINGFIELD, OR 97477