

M 115-64

FILED

OCT 6 1992

OREGON CORNER RESTORATION FORM

Section 34 Township 20S Range 10W

County Douglas Date 04-22-92

COUNTY SURVEYOR
DOUGLAS COUNTY, ORE.

CORNER DESIGNATION

S.W. Corner Section 34

- Condition Report Only
- Not Found
- Renewed
- Unrecorded
- Surveyed In
- Referenced Out

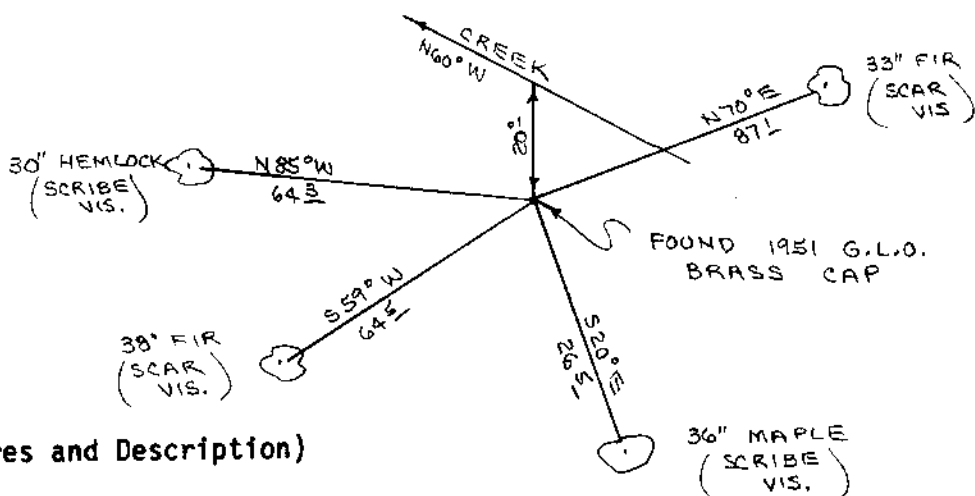
Previous Renewals/Surveys, etc. Original G.L.O. Survey by John Meldrum in 1866. G.L.O. Cadastral Survey by Thomas Tillman in 1951.

Monument(s) & Accessories Found: (Condition and Source)

Found 1951 G.L.O. Brass Cap set firmly in the ground.
30" Hemlock. N85W, 64.3' (Scribe Vis.), 1951 BT. Record N84 1/2 W, 64.7'
33" Fir , N70E, 87.1' (Scar Vis.) , 1951 BT. Record N45E , 87.1'
38" Fir , S59W, 64.5' (Scar Vis.) , 1951 BT. Record S58°45'W, 64.7'
36" Maple , S20E, 26.5' (Scribe Vis.), Origin Unknown.
Set 72" Aluminum Post, with land survey monumnet sign attach to, beside
aluminum-post. Painted all bearing trees red,
brass cap.

Monument Detail

Sketch



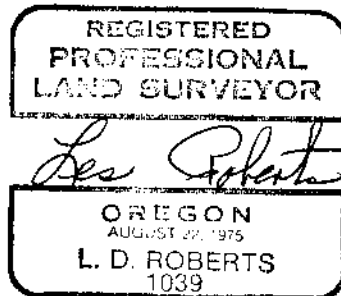
Monument Set (Procedures and Description)

New Accessories

Location & Comments

Corner lies on N.E. slope Compass Declination 20 1/2
about 20' South of creek. Firm/Agency Roberts
Creek bears N60W and S60E Surveying Inc.
Address 29 West 29th St.
Eugene, Oregon 97405
Party Chief Ted Baker
Notes _____
Witness Stuart Duce

Surveyor's Seal



C.S. File No. 63/138-21

M 115-6A

FILED

JK

OCT 6 1992

OREGON CORNER RESTORATION FORM

Section 34 Township 20S Range 10W

COUNTY SURVEYOR
DOUGLAS COUNTY, ORE.

County Douglas Date 04-24-92

CORNER DESIGNATION

South 1/16 Corner
Section 34

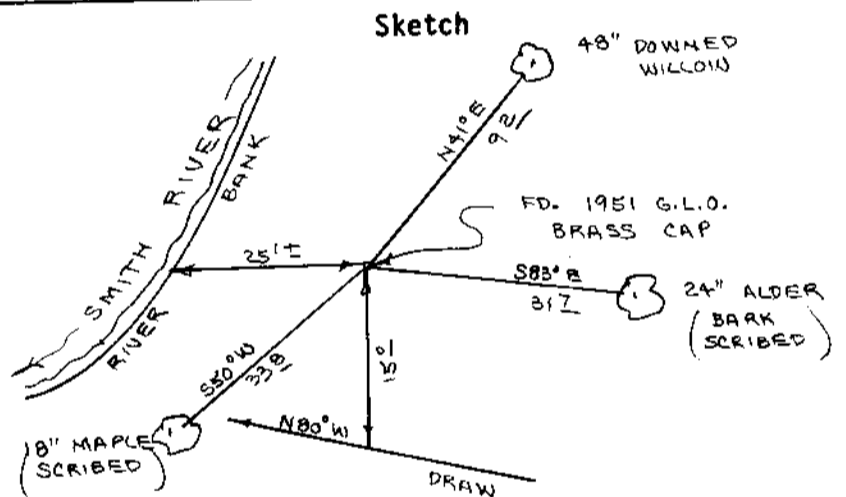
- Condition Report Only
- Not Found
- Renewed
- Unrecorded
- Surveyed In
- Referenced Out

Previous Renewals/Surveys, etc. Original G.L.O. Survey by John Meldrum
in 1866. G.L.O. Cadastral Survey by Thomas Tillman in 1951.

Monument(s) & Accessories Found: (Condition and Source)

Found 1951 G.L.O. Iron Pipe and Brass Cap lying on the ground. Re-set
pipe and cap from N.E. Willow B.T.
48" Downed Willow, N41E, 9.2' (No Marks), 1951 BT. Record N41E, 9.2'
S.W. Alder B.T. was washed away by Smith River.

Monument Detail



Monument Set (Procedures and Description)

New Accessories

18" Maple, S50W, 33.8' (Scribed/Painted Red)
24" Alder, S83E, 31.7' (Bark Scribed/Painted Red)
Set 72" aluminum post, with land survey monument sign attached to, beside
brass cap. Painted all bearing trees red.

Location & Comments

Corner lies 25' East of Compass Declination 20 1/2
Smith River and 15' North Firm/Agency Roberts
of small draw, Draw bears Surveying Inc.
N80W Address 29 West 29th St.
Eugene, Oregon 97405
Party Chief Ted Baker
Notes
Witness Stuart Duce.

Surveyor's Seal



U.S. File No. 63/138-21
B

M 115-6A

FILED

OCT 6 1992

OREGON CORNER RESTORATION FORM

Section 34 Township 20S Range 10W

County Douglas Date 04-22-92

COUNTY SURVEYOR
DOUGLAS COUNTY, ORE.

CORNER DESIGNATION

West 1/4 Corner
Section 34

- Condition Report Only
- Not Found
- Renewed
- Unrecorded
- Surveyed In
- Referenced Out

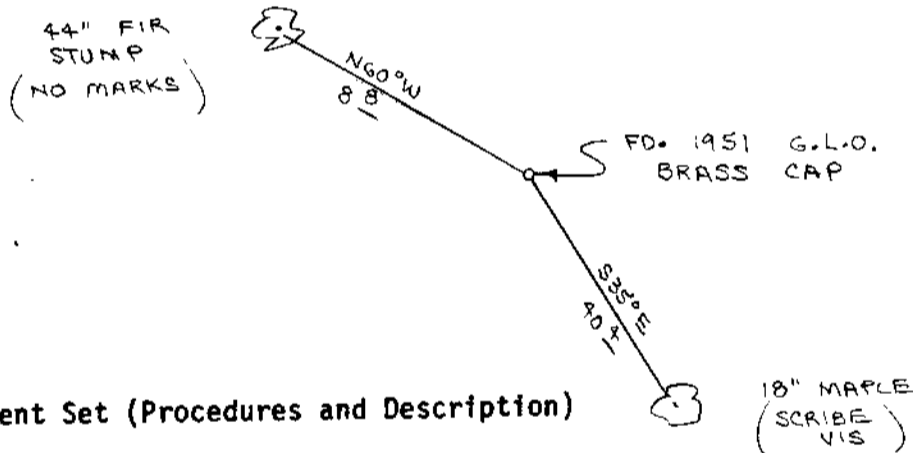
Previous Renewals/Surveys, etc. Original G.L.O. Survey by John Meldrum
in 1866. G.L.O. Cadastral Survey by Thomas Tillman in 1951.

Monument(s) & Accessories Found: (Condition and Source)

Found 1951 G.L.O. Brass Cap set firmly in the ground.
44" Fir Stump, N60W, 8.8' (No Marks) , 1866 BT. Record N60W, 8.8'
18" Maple , S35E, 40.4' (Scribe Vis.), 1951 BT. Record S35°45'E, 40.9'
Set 72" aluminum post, with land survey monument sign attached to, beside
brass cap. Painted all bearing trees red.

Monument Detail

Sketch



Monument Set (Procedures and Description)

New Accessories

Location & Comments

Corner lies on West slope at base of hill. Compass Declination $20\frac{1}{2}$
Firm/Agency Roberts
Surveying Inc.
Address 29 West 29th St.
Eugene, Oregon 97405
Party Chief Ted Baker
Notes
Witness Stuart Duce

Surveyor's Seal



C.S. File No. 63/138-21

M115-6A

FILED

zh

OREGON CORNER RESTORATION FORM

OCT 6 1992

Section 34 Township 20S Range 10W

County Douglas Date 04-26-92

COUNTY SURVEYOR
DOUGLAS COUNTY, ORE.

CORNER DESIGNATION

G.S. 1/16 Corner
Section 34

- Condition Report Only
- Not Found
- Renewed
- Unrecorded
- Surveyed In
- Referenced Out

Previous Renewals/Surveys, etc. 1983 B.L.M. Survey by Group #1168.

Monument(s) & Accessories Found: (Condition and Source)

Found 1983 B.L.M. Iron Pipe and Brass Cap lying on the ground. Re-set iron pipe and brass cap from found 1983 B.T.'s.

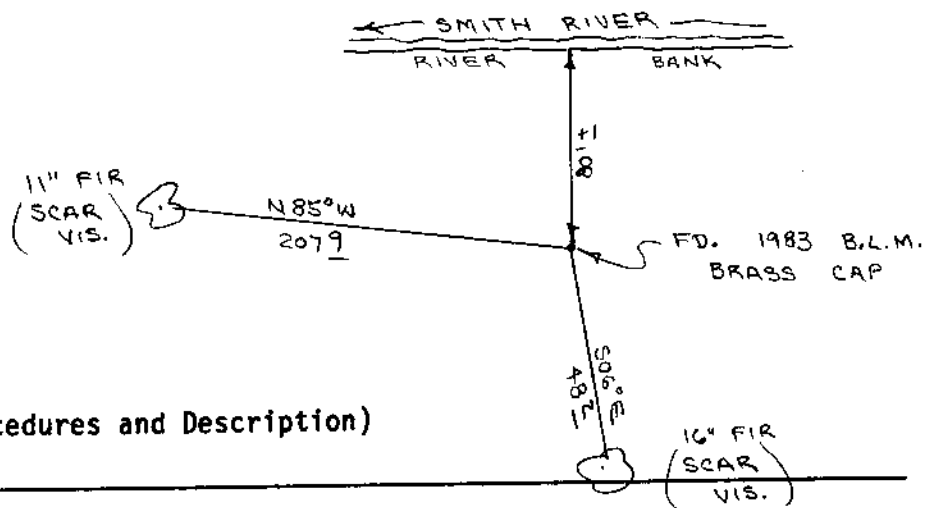
11" Fir, N85W, 207.9' (Scar Vis.), 1983 BT. Record N85 1/4 W, 207.9'

16" Fir, S06E, 48.2' (Scar Vis.), 1983 BT. Record S6 1/4 E, 48.2'

Set 72" aluminum post, with land survey monument sign attached to, beside brass cap. Painted all bearing trees red.

Monument Detail

Sketch



Monument Set (Procedures and Description)

New Accessories

Location & Comments

Corner lies on flat ground about 80' feet South of South bank of Smith River. Compass Declination 20 1/2

Firm/Agency ROBERTS Surveying, Inc.

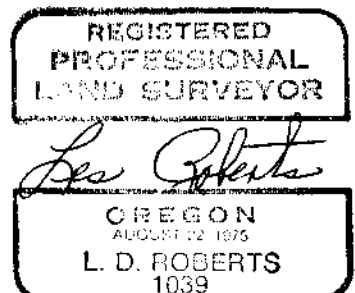
Address 29 West 29th St. Eugene, Oregon 97405

Party Chief Ted Baker

Notes

Witness Stuart Duce.

Surveyor's Seal



C.S. File No. 63/138-21