

OREGON CORNER RESTORATION FORM

FILED

Section 10 Township 23S Range 6W

OCT 1 1992

County DOUGLAS Date 6/92

COUNTY SURVEYOR
DOUGLAS COUNTY, ORE.

Corner Designation

SOUTH QUARTER CORNER

SECTION 10

- Condition Report Only
- Not Found
- Renewed
- Unrecorded
- Surveyed In
- Referenced Out

Previous Renewals/Surveys, etc. _____

Monument(s) & Accessories Found: (Condition and Source)

FOUND BRASS CAP IN GOOD CONDITION

FOUND ROOT HOLE BEARING N18°W 21° FT. AS 1957 NOTES INDICATED

FOUND ROTTEN REMAINS OF DOWN LAG WITH PARTIAL SCRIBE OF A "4" IN

BURNED FACE BEARS S65°E 25° FT. (RECORD S65½°E 27.½ FT)

Monument Detail

T23S R 6W

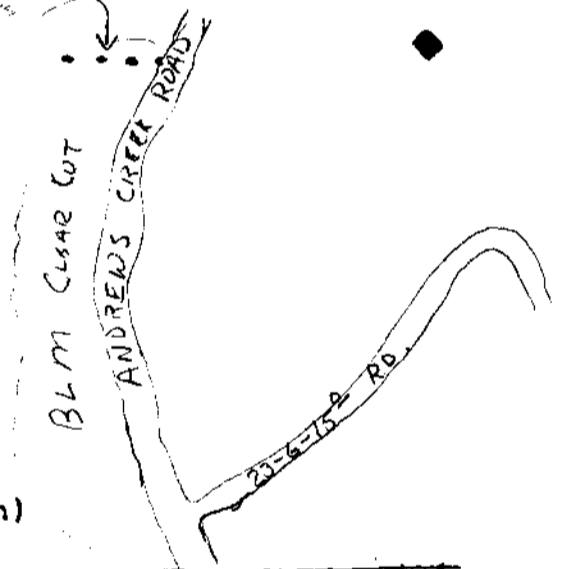
¼ S10

S15

1957

FENCE POSTS
ON LINE

Sketch



Monument Set (Procedures and Description)

New Accessories

11" DOUG FIR BEARS N35°W 22.4 FT. I SCRIBE, PAINT, TAG, AND PUT P.K. NAIL IN FACE

15" DOUG FIR BEARS S30°W 27.9 FT. I SCRIBE, PAINT, TAG, AND PUT P.K. NAIL IN FACE

12" HEMLOCK BEARS S40°E 12° FT. I TAG

Location & Comments

CORNER SITS IN STAND

OF YOUNG TREES APPROX

600 FT EAST OF ANDREWS

CR. RD. AT NORTH

END OF NEW BLM

CLEAR CUT

Compass Declination 19½°

Firm/Agency LOWE ROCK

TIMBER COMPANY

Address P.O. BOX 1127

ROSEBURG, ORE

Party Chief KEN HOFFINE

Notes _____

Witness GARY ANGIOLET

Surveyor's Se

REGISTERED
PROFESSIONAL
LAND SURVEYOR

Ken W Hoffine

OREGON
JULY 16, 1987
KEN W. HOFFINE
2291

#96x

CS. File No. 63/38-19