

OREGON CORNER RESTORATION FORM

SEP 8 1992

Section 35 & 36 Township 22S Range 6W

COUNTY SURVEYOR
DOUGLAS COUNTY, ORE.

County DOUGLAS Date 20 AUG 1992

Corner Designation

S 1/16 35/36

- Condition Report Only
- Not Found
- Renewed
- Unrecorded
- Surveyed In
- Referenced Out

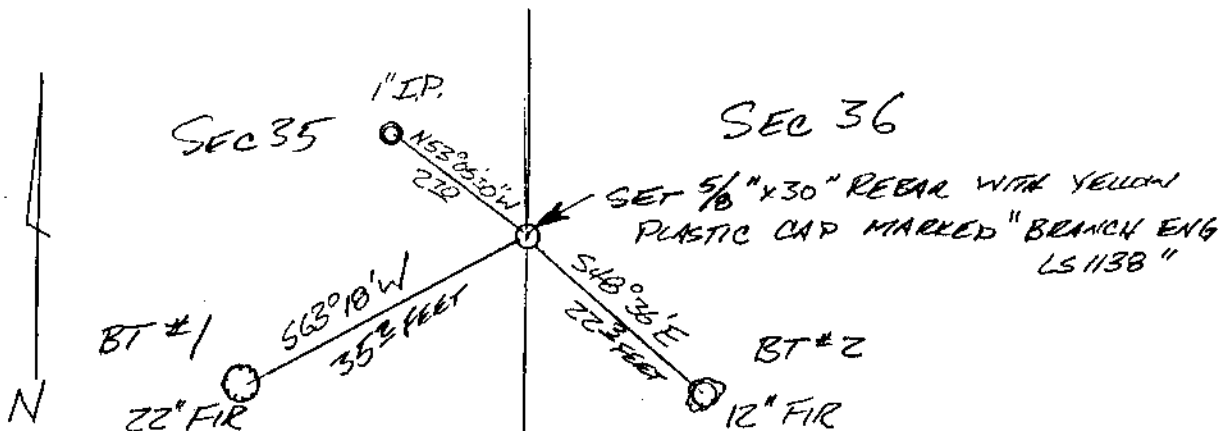
Previous Renewals/Surveys, etc. None

Monument(s) & Accessories Found: (Condition and Source)

FOUND 1" IRON PIPE WITH PLASTIC INSERT MARKED "APP 1/16"
BEARS N 53° 05' 30" W 270 FEET, UNKNOWN
ORIGINAL.

Monument Detail

Sketch



Monument Set (Procedures and Description)

SET 5/8" x 30" REBAR WITH YELLOW PLASTIC CAP MARKED "BRANCH
ENG LS 1138". CORNER WAS SET ON LINE MIDWAY BETWEEN
THE COMPOSITE E 1/4 CORNER OF SECTION 35 AND THE SE
CORNER OF SECTION 36.

New Accessories

BT #1 - 22" FIR SCRIBED "S 1/16 S 35 BT"
S 63° 18' W 352 FEET

BT #2 - 12" FIR SCRIBED S 1/16 S 36 BT
S 48° 36' E 223 FEET

Location & Comments

Surveyor's Seal

Compass Declination _____
 Firm/Agency BRANCH
ENGINEERING
 Address 212 Q STREET
SPRINGFIELD, OR 97477
 Party Chief G. HOFFMAN
 Notes _____
 Witness T. MONTGOMERY

