

FILED JR

AUG 7 1992

OREGON CORNER RESTORATION FORM

Section 7 Township 22S Range 7W
County DOUGLAS Date 8/4/92

COUNTY SURVEYOR
DOUGLAS COUNTY, OREGON

Corner Designation

CS 1/16 SECTION 7

- Condition Report Only
- Not Found
- Renewed
- Unrecorded
- Surveyed In
- Referenced ~~IN~~ IN

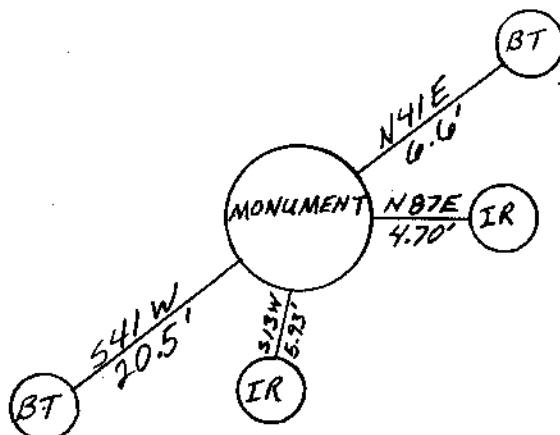
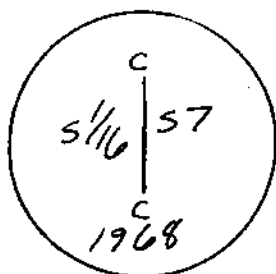
Previous Renewals/Surveys, etc. _____

Monument(s) & Accessories Found: (Condition and Source)

FOUND A 28" D. FIR STUMP W/ HEALED FACE AND TAG
BRS. N41E 6.6'
FOUND A 34" D. FIR STUMP W/ HEALED FACE AND TAG
BRS. S41W 20.5'
FOUND A 5/8" IRON ROD 30" LONG WITH PLASTIC CAP
MARKED STUNTZNER ENGR. BRS. N87E 4.70'
FOUND A 5/8" IRON ROD 30" LONG WITH PLASTIC CAP
MARKED STUNTZNER ENGR. BRS. S13W 5.93'

Monument Detail

Sketch



Monument Set (Procedures and Description)

REPLACED THE IRON PIPE AND BRASS
CAP BACK TO THE POSITION IT WAS IN BEFORE
THE AREA WAS LOGGED. WE USED THE 5/8" IRON
RODS THAT WE SET PRIOR TO THE LOGGING TO
REFERENCE THE CORNER BACK IN PLACE.

New Accessories

PLACED THE SAME MONUMENT THAT WE REMOVED
BACK IN A NEW MOUND OF STONES.

Location & Comments

CORNER FALLS ON Compass Declination _____
ROCKY SPRUR Firm/Agency STUNTZNER
RIDGE IN ENGINEERING
LOGGED OFF Address P.O. BOX 118
AREA COOS BAY OR. 97420
 Party Chief J. ESTABROOK

Surveyor's Seal

REGISTERED
PROFESSIONAL
LAND SURVEYOR

OREGON
JULY 17, 1986
HARVEY WILCOX
2244

Notes _____

Witness _____

C.S. File No. 63/138-16

#201
X