

M 115-23

FILED

JUN 19 1992

OREGON CORNER RESTORATION FORM

Section 34 Township 22S Range 6W

COUNTY SURVEYOR  
DOUGLAS COUNTY, ORE.

County DOUGLAS Date 5/4/92

Corner Designation

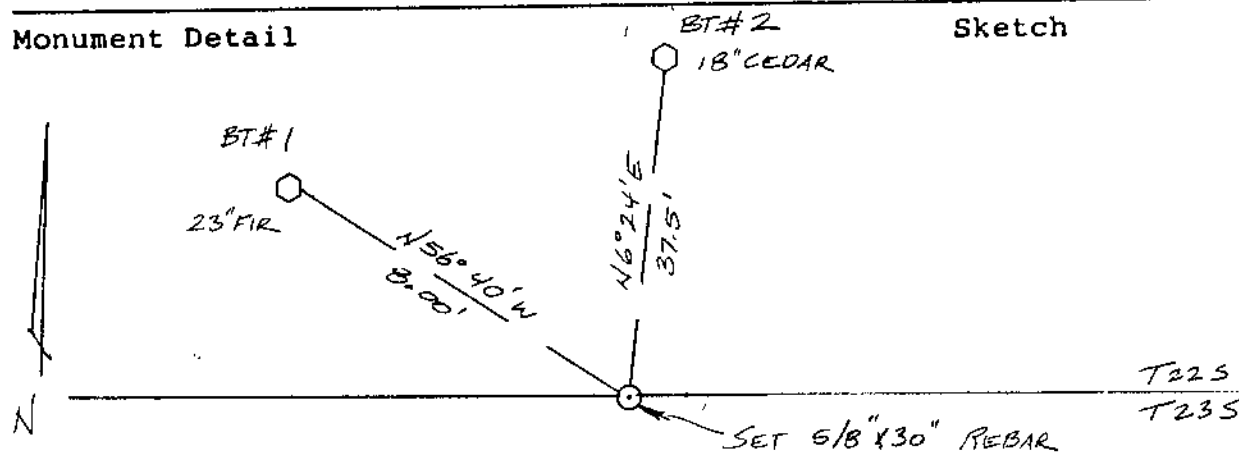
WEST 1/16 CORNER  
SECTION 34 ONLY

- Condition Report Only
- Not Found
- Renewed
- Unrecorded
- Surveyed In
- Referenced Out

Previous Renewals/Surveys, etc. NONE

Monument(s) & Accessories Found: (Condition and Source)  
NONE

Monument Detail



Monument Set (Procedures and Description)

SET 5/8" x 30" REBAR WITH YELLOW PLASTIC CAP MARKED  
"BRANCH ENG. LS 1138" CORNER WAS SET ON THE NORTH BOUNDARY  
OF TOWNSHIP 23 SOUTH, RANGE 6 WEST AT CARDINAL INTERSECTION  
FROM COMPUTED MIDPOINT BETWEEN SOUTHWEST AND SOUTHEAST  
CORNERS OF SECTION 34.

New Accessories

- BT#1) 23" FIR SCRIBED "W 1/16 S34 BT" BEARS  
N 56° 40' W 8.00 FEET
- BT#2) 18" CEDAR SCRIBED "W 1/16 S34 BT" BEARS  
N 6° 24' E 37.5 FEET

Location & Comments

Surveyor's Seal

Compass Declination \_\_\_\_\_

Firm/Agency BRANCH

ENGINEERING

Address 212 Q STREET

SPRINGFIELD, OR. 97477

Party Chief G. HOFFMAN

Notes \_\_\_\_\_

Witness T. MONTGOMERY

REGISTERED  
PROFESSIONAL  
LAND SURVEYOR

*James A. Branch*  
OREGON  
SEPT. 23, 1977  
JAMES A. BRANCH  
1138

M 115-23

FILED

*JK*

OREGON CORNER RESTORATION FORM

JUN 19 1992

Section 34 Township 22 S Range 6 W

COUNTY SURVEYOR  
DOUGLAS COUNTY, ORE.

County DOUGLAS Date 5/4/92

Corner Designation

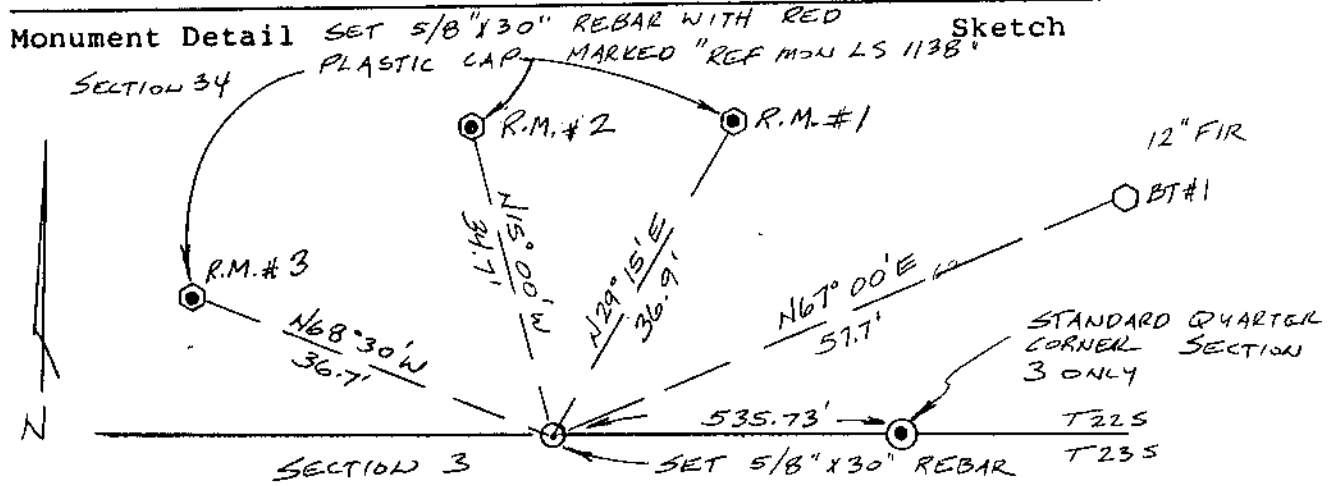
SOUTH 1/4 CORNER  
SECTION 34 ONLY

- Condition Report Only
- Not Found
- Renewed
- Unrecorded
- Surveyed In
- Referenced Out

Previous Renewals/Surveys, etc. NONE

Monument(s) & Accessories Found: (Condition and Source)

NONE



Monument Set (Procedures and Description)

SET 5/8" X 30" REBAR WITH YELLOW PLASTIC CAP MARKED  
"BRANCH ENG. L.S. 1138". CORNER WAS SET ON THE NORTH BOUNDARY  
OF TOWNSHIP 23 SOUTH, RANGE 6 WEST AT CARDINAL INTERSECTION  
FROM COMPUTED MIDPOINT BETWEEN SOUTHWEST AND SOUTHEAST  
CORNERS OF SECTION 34.

New Accessories

- BT #1) 12" FIR SCRIBED "1/4 534 BT BEARS N67°00' E 57.7 FEET.
- RM #1) SET 5/8" X 30" REBAR MARKED: REF MON L.S. 1138 BEARS  
N29°15' E. 36.9 FEET. RM #2) SET 5/8" X 30" REBAR  
MARKED: REF MON L.S. 1138 BEARS N15°00' W. 34.7 FEET.
- RM #3) SET 5/8" X 30" REBAR MARKED "REF MON L.S. 1138 BEARS N68°30' W  
Location & Comments 36.7 FEET.

Surveyor's Seal

Compass Declination \_\_\_\_\_  
 Firm/Agency BRANCH  
ENGINEERING  
 Address 212 Q STREET  
SPRINGFIELD, OR. 97477  
 Party Chief G. HOFFMAN  
 Notes \_\_\_\_\_  
 Witness R. ANDREASEN



*James A. Branch*



#165 ✓ T22-6  
#95 T23-6 ✓

M 115-23

FILED

JUN 19 1992

OREGON CORNER RESTORATION FORM

Section 34 Township 22S Range 6W  
County DOUGLAS Date 5/4/92

COUNTY SURVEYOR  
DOUGLAS COUNTY, ORE.

Corner Designation

EAST 1/4 CORNER  
SECTION 34 ONLY

- Condition Report Only
- Not Found
- Renewed
- Unrecorded
- Surveyed In
- Referenced Out

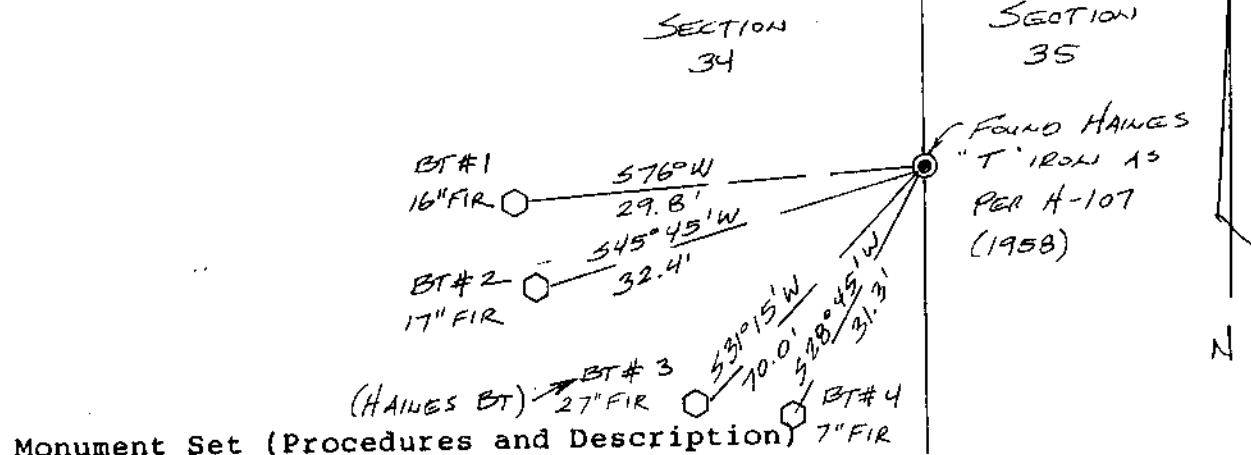
Previous Renewals/Surveys, etc. SET BY WILFORD HAINES IN 1958  
AS PER FIELD SURVEY (H-107) NOTES ARE ON FILE AT  
DOUGLAS COUNTY SURVEYOR'S OFFICE

Monument(s) & Accessories Found: (Condition and Source)

FOUND TYPICAL HAINES "T" IRON WITH BRASS WASHER IN MOUND  
OF STONE. "T" IRON WAS SET IN 1958 DURING FIELD SURVEY  
H-107 (NOTES ON FILE AT DOUGLAS COUNTY SURVEYOR'S OFFICE.)  
27" FIR WITH BT TAG MARKED "HAINES 1958" BEARS S31°15'W  
70.0 FEET (RECORD! 7" FIR S33°W 70-8 FEET)

Monument Detail

Sketch



Monument Set (Procedures and Description)

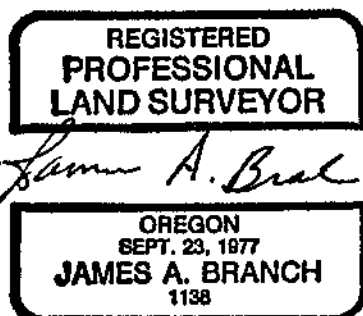
New Accessories

- BT#1) 16" FIR SCRIBED "1/4 S 34 BT" BEARS S76°W 29.8 FEET.
- BT#2) 17" FIR SCRIBED "1/4 S 34 BT" BEARS S45°45'W 32.4 FEET.
- BT#3) 27" FIR SET BY HAINES BEARS S31°15'W 70.0 FEET
- BT#4) 7" FIR SCRIBED "1/4 S 34 BT" BEARS S28°45'W 31.3 FEET

Location & Comments

Surveyor's Seal

Compass Declination \_\_\_\_\_  
 Firm/Agency BRAUCH  
ENGINEERING  
 Address 212 Q STREET  
SPRINGFIELD, OR. 97477  
 Party Chief G. HOFFMAN  
 Notes \_\_\_\_\_  
 Witness T. MONTGOMERY



#166+

M115-23

FILED

*JK*

JUN 19 1992

OREGON CORNER RESTORATION FORM

Section 34 Township 22S Range 6W

COUNTY SURVEYOR  
DOUGLAS COUNTY, ORE.

County DOUGLAS Date 5/27/92

Corner Designation

CENTER EAST 1/16 CORNER  
SECTION 34

- Condition Report Only
- Not Found
- Renewed
- Unrecorded
- Surveyed In
- Referenced Out

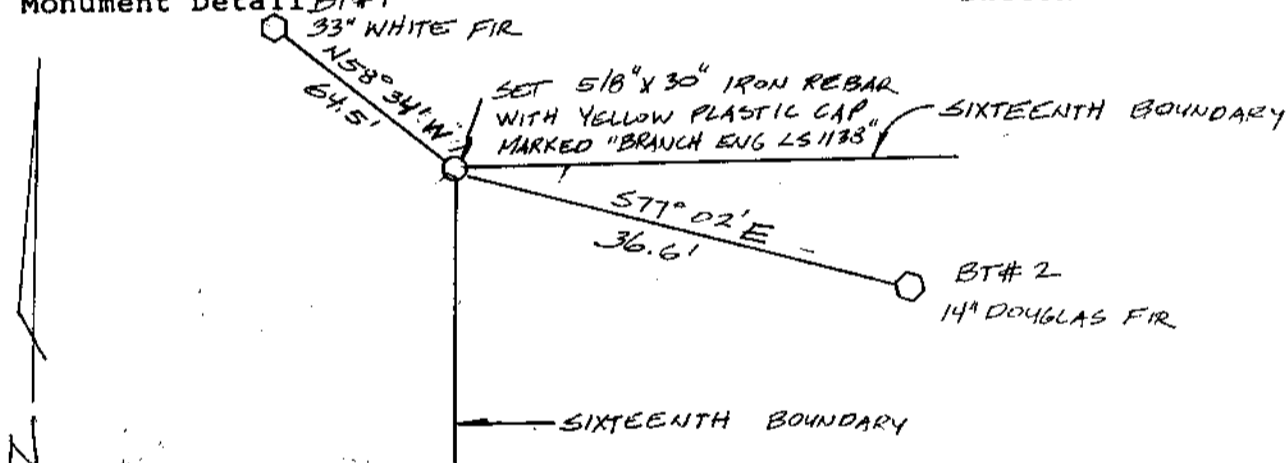
Previous Renewals/Surveys, etc. NONE

Monument(s) & Accessories Found: (Condition and Source)

NONE

Monument Detail BT#1

Sketch



Monument Set (Procedures and Description)

SET 5/8" X 30" REBAR WITH YELLOW PLASTIC CAP MARKED  
"BRANCH ENG LS 1138". CORNER IS SET ON LINE AT  
MIDPOINT BETWEEN CENTER EAST 1/16 SECTION 34 AND  
EAST 1/4 CORNER - SECTION 34 ONLY

New Accessories

- 1) 33" WHITE FIR SCRIBED "C-E 1/16 S 34 BT" BEARS  
N 58° 34' W 64.5' FEET
- 2) 14" DOUGLAS FIR SCRIBED "C-E 1/16 S 34 BT" BEARS  
S 71° 02' E 36.6 FEET

Location & Comments

Surveyor's Seal

CORNER LIES ON A Compass Declination \_\_\_\_\_  
25% WEST FACING Firm/Agency BRANCH  
SLOPE. OLD BROKEN ENGINEERING \_\_\_\_\_  
DOWN EAST WEST Address 212 Q STREET  
FENCE BEARS SPRINGFIELD, OR. 97477  
APPROXIMATELY 70 FEET Party Chief K. HOFFING  
SOUTH Notes K. HOFFING  
 Witness G. HOFFMAN



M 115-23

FILED

JUN 19 1992

OREGON CORNER RESTORATION FORM

Section 34 Township 22.5 Range 6W

County DOUGLAS Date 5/27/92

COUNTY SURVEYOR  
DOUGLAS COUNTY, ORE.

Corner Designation

SOUTHEAST 1/16 CORNER  
SECTION 34

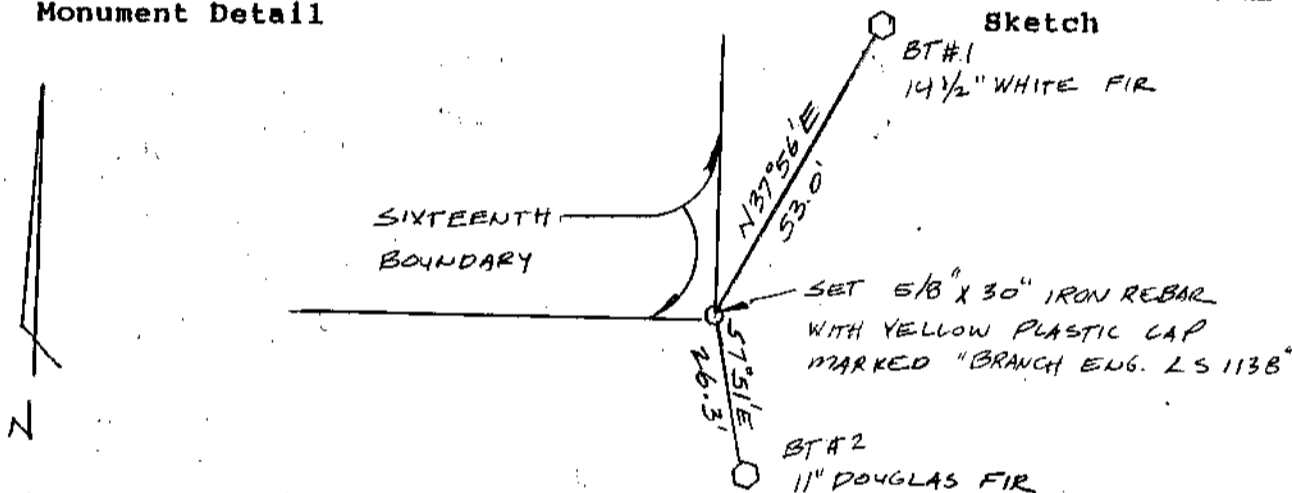
- Condition Report Only
- Not Found
- Renewed
- Unrecorded
- Surveyed In
- Referenced Out

Previous Renewals/Surveys, etc. NONE

Monument(s) & Accessories Found: (Condition and Source)

NONE

Monument Detail



Monument Set (Procedures and Description)

SET 5/8" X 30" REBAR WITH YELLOW PLASTIC CAP MARKED "BRANCH ENG. LS 1138" CORNER IS SET AT INTERSECTION OF LINE BETWEEN CENTER SOUTH 1/16 AND SOUTH 1/16 SECTION 34 ONLY AND LINE BETWEEN CENTER EAST 1/16 AND EAST 1/16 CORNER SECTION 34 ONLY.

New Accessories

- 1) 1 1/2" WHITE FIR SCRIBED "SE 1/16 534 BT" BEARS  
N 37° 56' E 53.0 FEET
- 2) 11" DOUGLAS FIR SCRIBED "SE 1/16 534 BT" BEARS  
S 07° 51' E 26.3 FEET

Location & Comments

CORNER LIES ON FLAT  
BENCH APPROXIMATELY  
28 FEET EAST OF  
NORTH-SOUTH CREEK AND  
APPROXIMATELY 75 FEET  
WEST OF OLD NORTH-  
SOUTH ROAD GRADE.

Compass Declination \_\_\_\_\_  
Firm/Agency BRANCH  
ENGINEERING  
Address 212 Q STREET  
SPRINGFIELD, OR. 97177  
Party Chief K. HOFFINE  
Notes K. HOFFINE  
Witness G. HOFFMAN

Surveyor's Seal

REGISTERED  
PROFESSIONAL  
LAND SURVEYOR

*James A. Branch*

OREGON  
SEPT. 23, 1977  
JAMES A. BRANCH  
1138

M 115-23

FILED

*[Signature]*

JUN 19 1992

OREGON CORNER RESTORATION FORM

Section 34 Township 22 S Range 6W

COUNTY SURVEYOR  
DOUGLAS COUNTY, ORE.

County DOUGLAS

Date 5/27/92

Corner Designation

CENTER SOUTH 1/16 CORNER  
SECTION 34

- Condition Report Only
- Not Found
- Renewed
- Unrecorded
- Surveyed In
- Referenced Out

Previous Renewals/Surveys, etc. NONE

Monument(s) & Accessories Found: (Condition and Source)

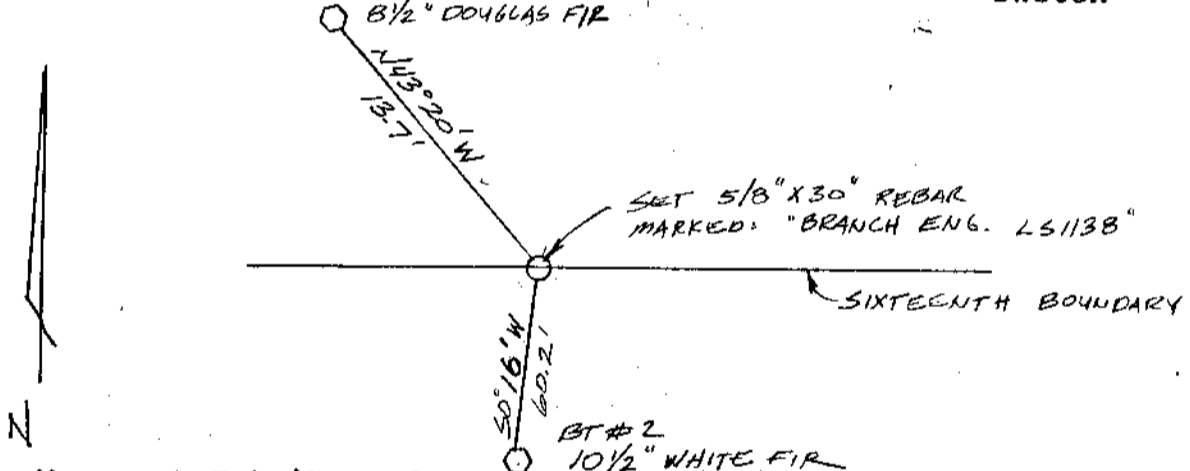
NONE

Monument Detail

BT#1

8 1/2" DOUGLAS FIR

Sketch



Monument Set (Procedures and Description)

SET 5/8" X 30" IRON REBAR WITH YELLOW PLASTIC CAP MARKED: "BRANCH ENG. LS 1138" CORNER IS SET ON LINE AT PROPORTIONED 1897 660 DISTANCE BETWEEN SOUTH 1/4 CORNER SECTION 34 ONLY AND CENTER 1/4 CORNER SECTION 34.

New Accessories

1) 8 1/2" DOUGLAS FIR SCRIBED "CS 1/16 534 BT" BEARS  
N43°20' W 13.7 FEET

2) 10 1/2" WHITE FIR SCRIBED "CS 1/16 534 BT" BEARS  
S00°16' W 60.2 FEET

Location & Comments

Surveyor's Seal

CORNER LIES ON STEEP EAST SLOPE Compass Declination \_\_\_\_\_  
 APPROXIMATELY 25 FEET Firm/Agency BRANCH ENGINEERING  
 EAST OF CREAK FROM FLAT RIDGE Address 212 Q STREET  
SPRINGFIELD, OR. 97477  
 Party Chief K. HOFFINE  
 Notes K. HOFFINE  
 Witness G. HOFFMAN

REGISTERED PROFESSIONAL LAND SURVEYOR

*[Signature]*  
OREGON  
SEPT. 23, 1977  
JAMES A. BRANCH  
1138

M115-23

FILED

JK

OREGON CORNER RESTORATION FORM

JUN 19 1992

Section 34 Township 22 S Range 6W COUNTY SURVEYOR  
County DOUGLAS Date 5/27/92 DOUGLAS COUNTY, ORE.

Corner Designation

SOUTHWEST 1/16 CORNER  
SECTION 34

- Condition Report Only
- Not Found
- Renewed
- Unrecorded
- Surveyed In
- Referenced Out

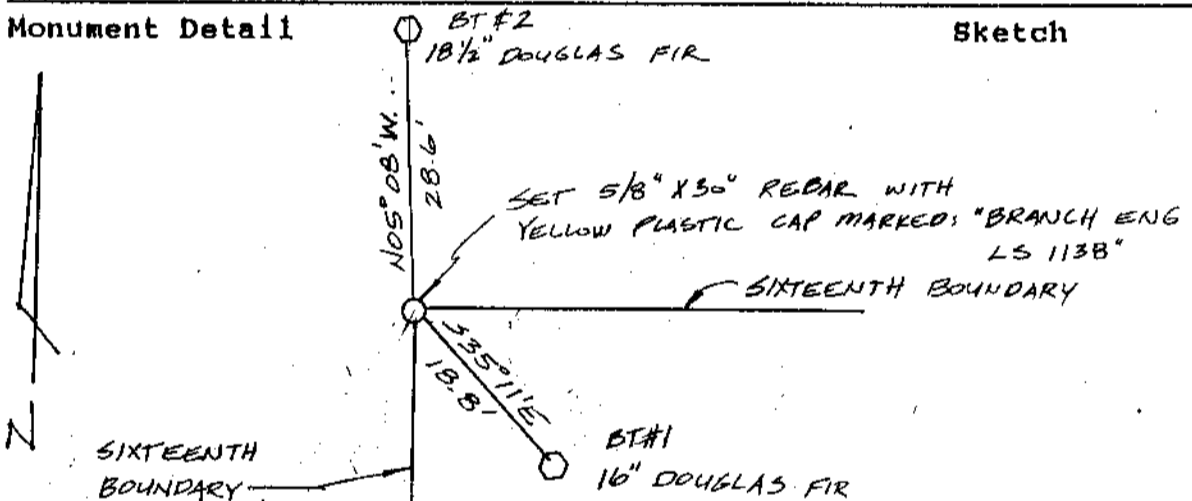
Previous Renewals/Surveys, etc. NONE

Monument(s) & Accessories Found: (Condition and Source)

NONE

Monument Detail

Sketch



Monument Set (Procedures and Description)

SET 5/8" X 30" IRON REBAR WITH YELLOW PLASTIC CAP MARKED "BRANCH ENG LS 1138". CORNER IS SET ON LINE AT MIDPOINT BETWEEN CENTER SOUTH 1/16 CORNER SECTION 34 AND SOUTH 1/16 CORNER SECTION 33 AND SECTION 34.

New Accessories

- 1 1/16" DOUGLAS FIR SCRIBED "SW 1/16 S34 BT" BEARS  
S 35° 11' E 18.8 FEET
- 2 1/16 1/2" DOUGLAS FIR SCRIBED "SW 1/16 S34 BT" BEARS  
N 05° 08' W 28.6 FEET

Location & Comments

CORNER LIES ON A  
VERY STEEP NORTHEAST  
SLOPE APPROXIMATELY 40  
FEET NORTH OF STEEP  
EAST FACING RIDGELINE  
AND 1 1/2 CHAINS EAST  
OR FLAT RIDGETOP

Compass Declination \_\_\_\_\_  
Firm/Agency BRANCH  
ENGINEERING  
Address 212 Q STREET  
SPRINGFIELD, OR. 97477  
Party Chief K. HOFFINE  
Notes K. HOFFINE  
Witness G. HOFFMAN

Surveyor's Seal

REGISTERED  
PROFESSIONAL  
LAND SURVEYOR

JA A. Branch  
OREGON  
SEPT. 23, 1977  
JAMES A. BRANCH  
1138

M 115-23

FILED

OREGON CORNER RESTORATION FORM

JUN 19 1992

Section 34 Township 22S Range 6W

County DOUGLAS Date 5/26/92

COUNTY SURVEYOR  
DOUGLAS COUNTY, ORE.

Corner Designation

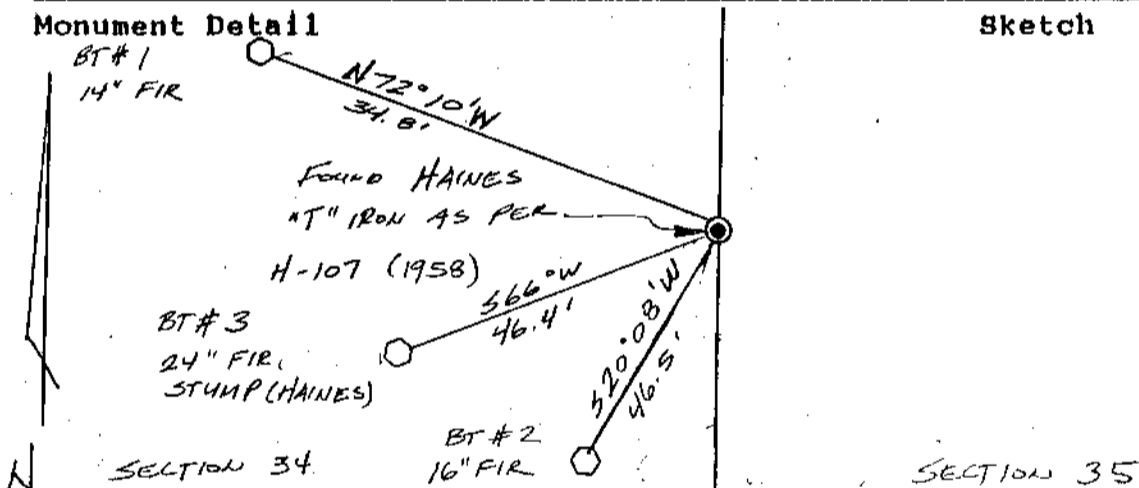
SOUTH 1/16 CORNER  
SECTION 34 ONLY

- Condition Report Only
- Not Found
- Renewed
- Unrecorded
- Surveyed In
- Referenced Out

Previous Renewals/Surveys, etc. SET BY WILFORD HAINES IN 1958 AS PER FIELD SURVEY (H-107) NOTES ARE ON FILE AT DOUGLAS COUNTY SURVEYOR'S OFFICE.

Monument(s) & Accessories Found: (Condition and Source)

FOUND TYPICAL HAINES "T" IRON WITH BRASS WASHER MARKED "HAINES 239" (NOTES ON FILE AT DOUGLAS COUNTY SURVEYOR'S OFFICE) 24" FIR STUMP BEARS S66°W 46.4 FEET (RECORD: 6" FIR S62°W 46.7')



Monument Set (Procedures and Description)

New Accessories

- 1) 14" FIR SCRIBED "S 1/16 S34 BT" BEARS  
N72°10'W 34.0 FEET
- 2) 16" FIR SCRIBED "S 1/16 S34 BT" BEARS  
S20°08'W 46.5 FEET

Location & Comments

Surveyor's Seal

Compass Declination \_\_\_\_\_  
 Firm/Agency BRANCH  
ENGINEERING  
 Address 212 Q STREET  
SPRINGFIELD, OR. 97477  
 Party Chief G. HOFFMAN  
 Notes \_\_\_\_\_  
 Witness R. ANDREASEN

REGISTERED  
PROFESSIONAL  
LAND SURVEYOR

*Jan A. Beal*

OREGON  
SEPT. 23, 1977  
JAMES A. BRANCH  
1138